

FREEHOLD



House - Detached (EPC Rating: C)

240 NEW ROAD, HIGH WYCOMBE,
BUCKINGHAMSHIRE, HP12 4RG

Guide Price

£495,000

**Rye
View**
HOMES



5 Bedroom House - Detached located in High Wycombe

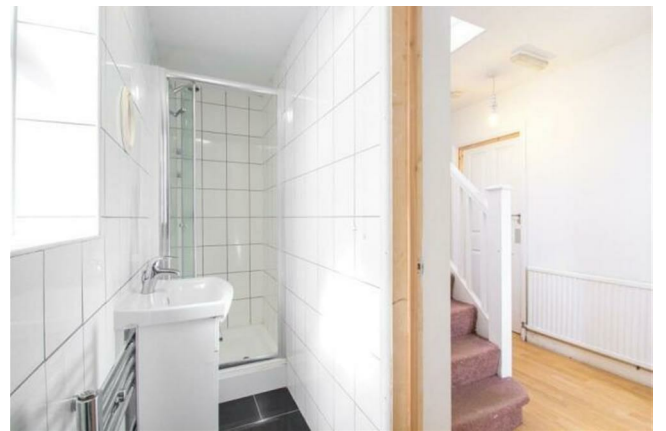
RyeView Homes are pleased to present to the market this extended five-bedroom, two-bathroom detached house, located in the Cressex area of High Wycombe.

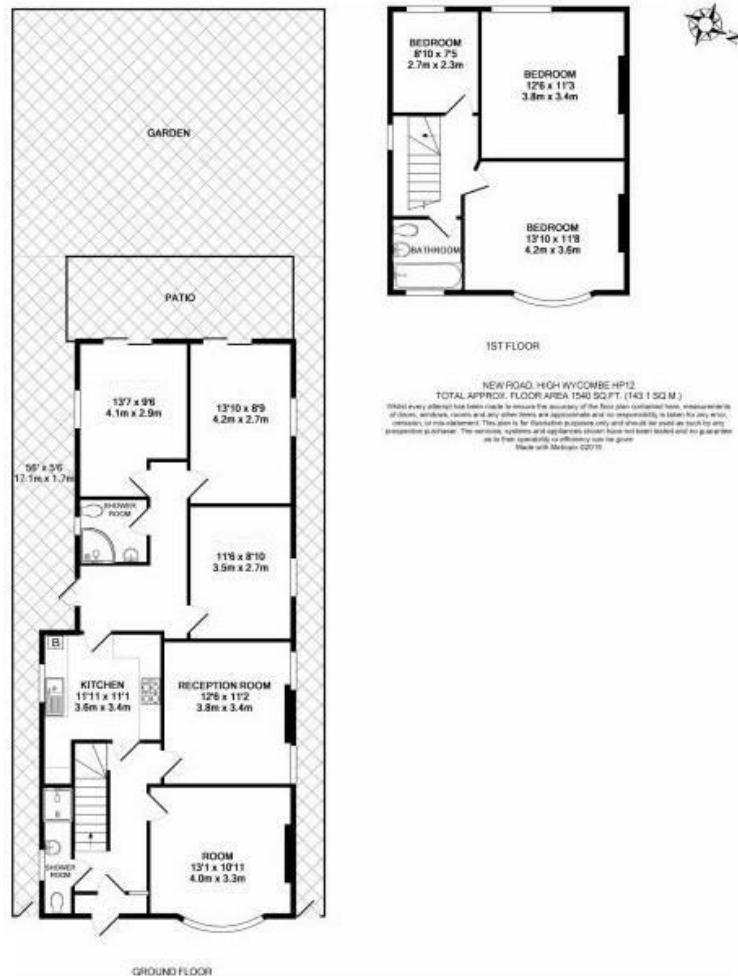
The accommodation comprises; entrance hall, three reception rooms, modern fitted kitchen, two contemporary ground floor shower rooms, five bedrooms and a modern shower room on the first floor. The property further benefits from; UPVC double glazing, gas central heating, large private rear garden which has scope to be part of back land development and driveway parking for at least four cars.

The property is located within walking distance to local amenities and a short drive of junction 4 of the M40.

The property may also be suitable for redevelopment into 3 units depending on planning permission.

Tenure

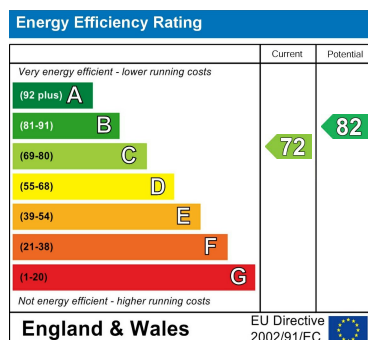




Council Tax Band

D

Energy Performance Graph



Call us on

01494 510099

info@ryevviewhomes.com

ryevviewhomes.com

Agents Note: Whilst every care has been taken to prepare these particulars, they are for guidance purposes only. All measurements are approximate and are for general guidance purposes only and whilst every care has been taken to ensure their accuracy, they should not be relied upon and potential buyers are advised to recheck the measurements.