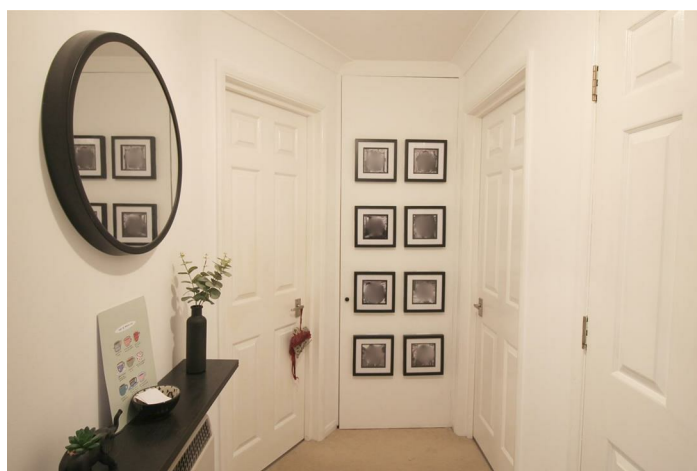


LEASEHOLD



Flat (EPC Rating: D)

**FLAT 29, DOLPHIN COURT KINGSMEAD  
ROAD, HIGH WYCOMBE,**  
Guide Price

**£199,950**

**Rye  
View**  
HOMES



# 1 Bedroom Flat located in High Wycombe

RyeView Homes are pleased to market this well-presented first floor one-bedroom executive apartment, situated in a highly sought after premium development in Loudwater.

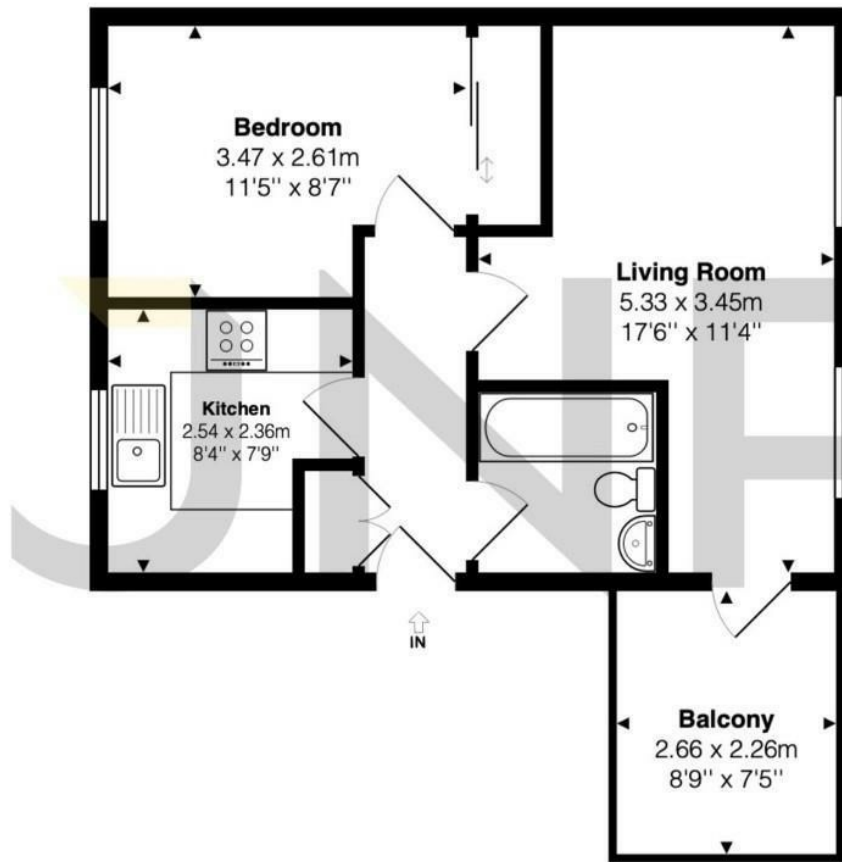
The property comprises in brief; communal entrance, entrance hall, open-plan living/ dining room, fitted kitchen, double bedroom with fitted wardrobes and bathroom. Further benefits include covered balcony, stunning communal gardens and allocated residents and visitors parking.

Situated within the picturesque Buckinghamshire Home Counties, this luxury apartment complex in Loudwater benefits excellent road and rail access to nearby beauty spots including Marlow and Beaconsfield, and central London via motorway or train.

Combined with stunning Japanese-style communal water gardens featuring Pergola seating and a Koi Carp pond, plus an indoor swimming pool and a gymnasium, the unique Dolphin Court luxury development is highly sought after by young professionals and couples alike.







The approximate total area for the elements of the property represented on the floorplan is 41 SqM (441 Sq.Ft)

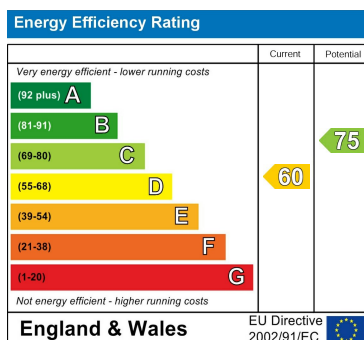
Dolphin Court, Kingsmead Road, High Wycombe, Buckinghamshire, HP11 1XE

This floor plan is provided by Expert Survey Solutions Ltd for indicative guidance only. Whilst every attempt has been made to ensure the accuracy of the floor plans contained here, measurements of doors, windows and rooms are approximate and no responsibility is taken for any error, omission or mis-statement. Details shown on this floorplan including all measurements, areas and proportions cannot be guaranteed by either the provider or estate agency and should not be relied upon. If there is any area where accuracy is required, please contact the selling agent for clarification.

Council Tax Band

C

Energy Performance Graph



Call us on

01494 510099

info@ryeviewhomes.com

ryeviewhomes.com

Agents Note: Whilst every care has been taken to prepare these particulars, they are for guidance purposes only. All measurements are approximate and are for general guidance purposes only and whilst every care has been taken to ensure their accuracy, they should not be relied upon and potential buyers are advised to recheck the measurements.