

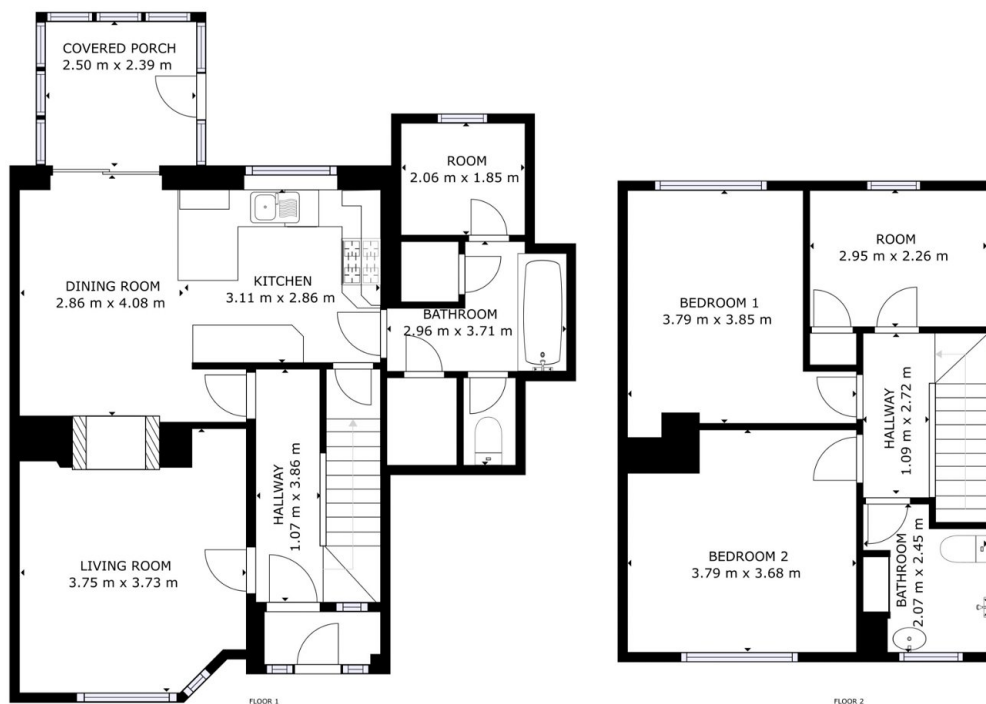
Lonsdale Avenue, Intake, DN2

Fixed Price £150,000

 3  1  2



- INTERACTIVE TOUR
- Spacious living room with bay window
- Conservatory and downstairs WC
- Two double bedrooms, one with fitted wardrobes
- Well-maintained rear garden
- 3-bedroom semi-detached property
- Open plan dining room and kitchen
- Ample storage space in outbuildings
- Further single bedroom
- Off-road parking



3-bed semi-detached home in Intake. Spacious living areas, conservatory, off-road parking and a well-maintained garden. Ideal for families, close to amenities and with easy access to Doncaster. Perfect for those looking to personalise their dream home