




27 Kentmere Drive, Lakeside, DN4

Fixed Price £325,000

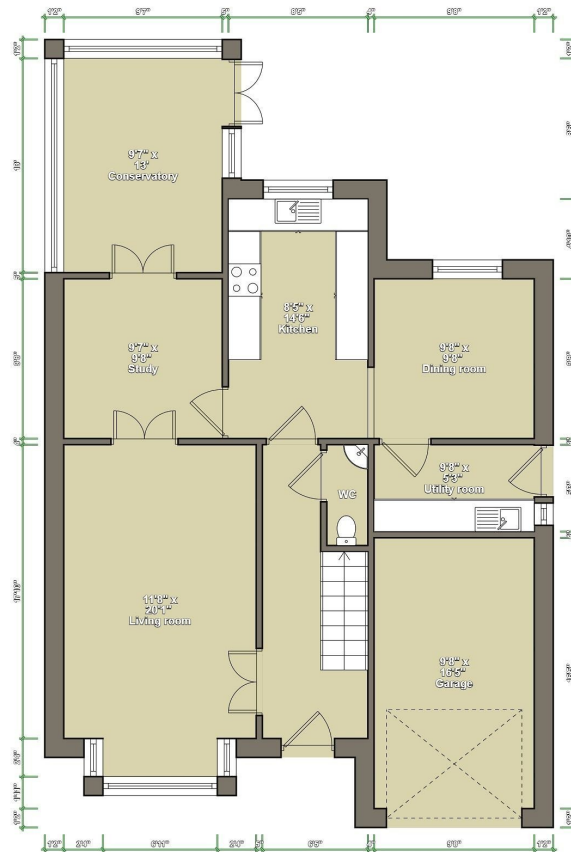
 4  2  4





ELITE
PROPERTY

- Detached Property
- En-Suite to master
- Cul-de-sac location
- 4 double bedrooms
- Off road parking & garage
- Conservatory
-
-



This detached house located in Lakeside is a must-see property for those in search of a spacious home.

The property boasts a large living room, further reception room, kitchen with utility room, spacious dining room and conservatory. Upstairs has 4 double bedrooms with the master



01302 981 149

info@elitepg.com // www.elitepg.com

3 Cavendish Court, South Parade, Doncaster DN1 2DJ



ELITE
PROPERTY

bedroom benefitting from an en-suite and fitted wardrobes, 3 further double bedrooms and a family bathroom.

The house is situated in a quiet cul-de-sac and benefits from off-road parking as well as a garage. The rear garden enjoys a large decked area as well as artificial turf.



01302 981 149

info@elitepg.com // www.elitepg.com

3 Cavendish Court, South Parade, Doncaster DN1 2DJ