

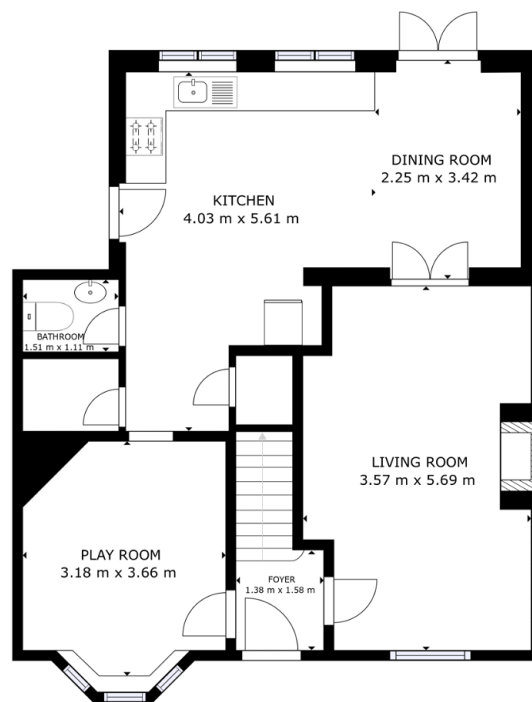
Briar Road, Armthorpe, DN3

Offers In Region Of £220,000

 4  1  2



- 4 bedroom semi detached property
- Large kitchen diner
- Spacious family bathroom
- Separate utility room
- Well kept rear garden with 2 decked areas
- 2 reception rooms
- 4 double bedrooms
- Downstairs WC
- Large plot
- Garage



GROUND FLOOR



GROSS INTERNAL AREA
GROUND FLOOR: 68.82 m², SECOND FLOOR: 68.72 m²
TOTAL: 137.54 m²
SIZES AND DIMENSIONS ARE APPROXIMATE, ACTUAL MAY VARY.



4-bed semi-detached in Armthorpe. 2 receptions, spacious kitchen diner, utility room for laundry/storage, downstairs WC, 4 double bedrooms, large family bathroom. Generous plot for expansion, well-kept garden with 2 decks, garage, ample off-road parking. Close to amenities, bus routes, M18.