



A one bedroom purpose built top floor apartment
Mercer Place, Pinner, HA5 3UH



Asking Price: £1,300 pcm

A one bedroom purpose built top floor apartment

Mercer Place,Pinner, HA5 3UH

• FULLY REFURBISHED • FITTED KITCHEN • LIVING/DINING ROOM • BEDROOM ONE • FAMILY SHOWER ROOM • DOUBLE GLAZING • ELECTRIC HEATING • LARGE STORAGE ROOM • UNFURNISHED

Description

A one bedroom purpose built top floor apartment close to Pinner Wood School and other local amenities. The property comprises of new kitchen, reception room, bedroom and bathroom and storage room.

**** An advance reservation payment of one weeks rent is required to secure the property ****

Location

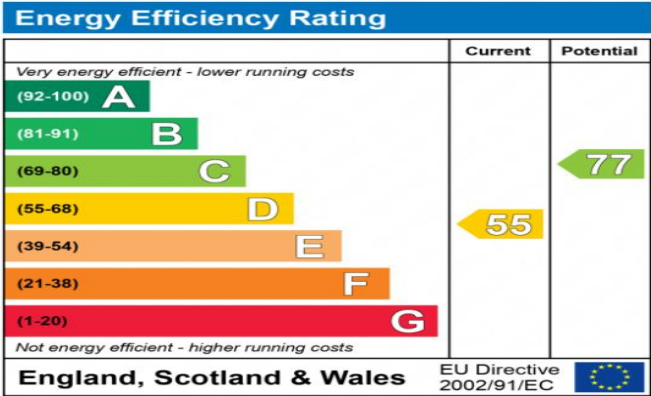
Both Pinner and Hatch End can be found within a few moments from the development offering a variety of boutique shops, restaurants, coffee houses and popular supermarkets. Transport facilities include local bus links, the underground Metropolitan Line at Pinner station and the overground line at Hatch End Station, providing a fast and frequent service into Central London and beyond. The area is also well served for Schooling and recreational facilities.





Additional Information

- Local Authority: L.B Harrow
- Council Tax Band: C
- Deposit Amount: £1,557.00
- Reservation Payment: One weeks rent
- Energy Efficiency Rating: Band D
- Available Date: 05/12/2025



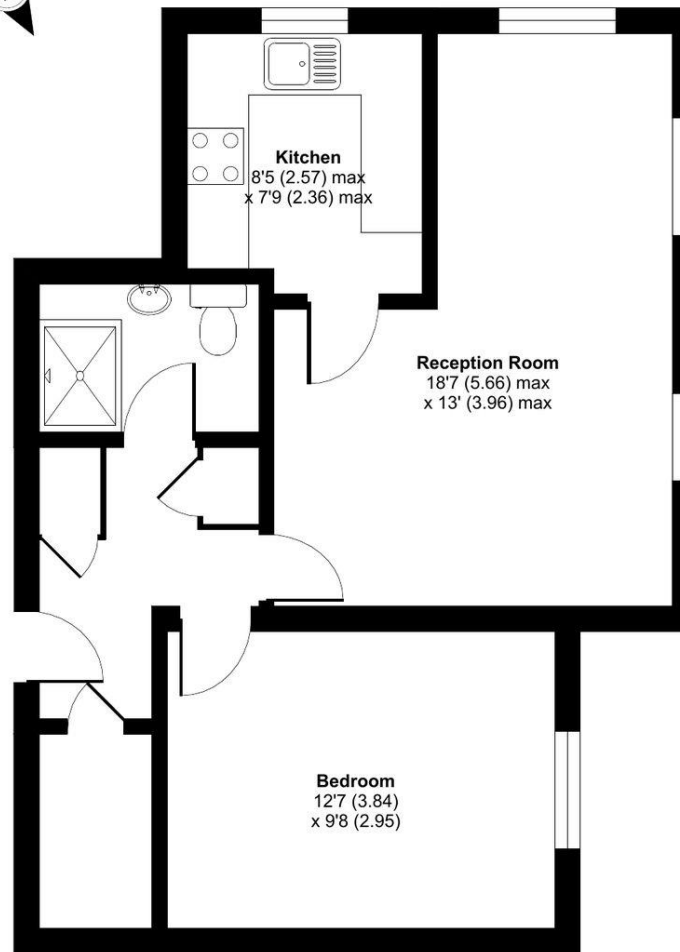
The energy efficiency rating is a measure of the overall efficiency of a home. The higher the rating the more energy efficient the home is and the lower the fuel bills will be.



Mercer Place, Pinner, HA5

Approximate Area = 523 sq ft / 48.6 sq m

For identification only - Not to scale



SECOND FLOOR



Floor plan produced in accordance with RICS Property Measurement Standards incorporating International Property Measurement Standards (IPMS2 Residential). © nichecom 2022.
Produced for Robsons Lettings. REF: 805689



REGISTERED OFFICE 2-4 PACKHORSE ROAD, GERRARDS CROSS, BUCKINGHAMSHIRE, ENGLAND, SL9 7QE. COMPANY NO. 07557114. VAT NO. GB211239453

ROBSONS