



A charming two bedroom family home set in the heart of Pinner
Copperfield Way,Pinner, HA5 5RY



Asking Price: £1,950 pcm

A charming two bedroom family home set in the heart of Pinner

Copperfield Way,Pinner, HA5 5RY

• FITTED KITCHEN • RECEPTION ROOM • TWO BEDROOMS • FAMILY BATHROOM • PRIVATE GARDEN • PARKING VIA OWN DRIVEWAY • DOUBLE GLAZING • UNFURNISHED

Description

A charming two bedroom family home set in the heart of Pinner. Located in a peaceful and secluded position, this well maintained two double bedroom mid terraced home offers well-proportioned living accommodation consisting of a light a spacious living room, modern kitchen with appliances, downstairs w/c, two double bedrooms, family bathroom, private rear garden and a front driveway.

**** An advance reservation payment of one weeks rent is required to secure the property ****

Location

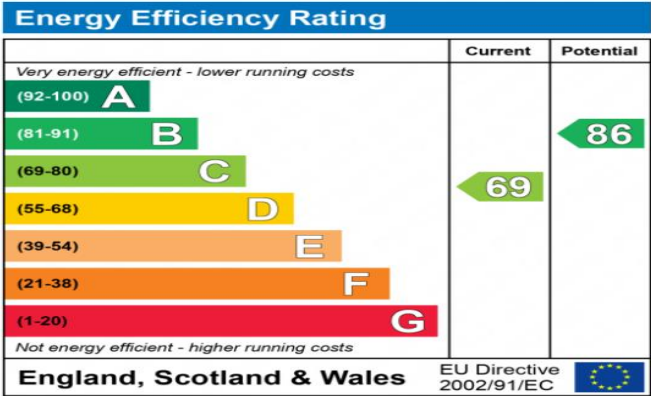
Pinner can be found within a few moments from this property offering a variety of boutique shops, restaurants, coffee houses and popular supermarkets. Transport facilities include local bus links and the Metropolitan Line at Pinner station, providing a fast and frequent service into the heart of Central London and beyond. The area is well served for primary and secondary schooling, children's parks/playgrounds and recreational facilities.





Additional Information

- Local Authority: Harrow
- Council Tax Band: E
- Deposit Amount: £2,250.00
- Reservation Payment: One weeks rent
- Energy Efficiency Rating: Band C
- Available Date: 09/07/2025



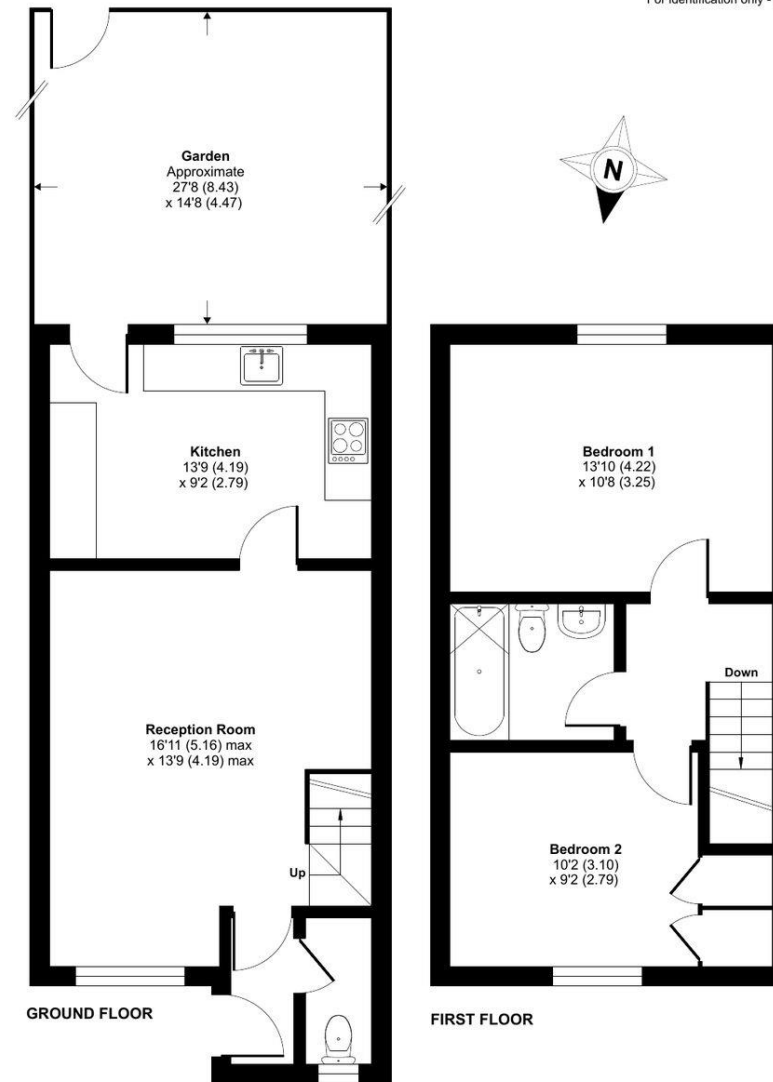
The energy efficiency rating is a measure of the overall efficiency of a home. The higher the rating the more energy efficient the home is and the lower the fuel bills will be.



Copperfield Way, Pinner, HA5

Approximate Area = 757 sq ft / 70 sq m

For identification only - Not to scale



Floor plan produced in accordance with RICS Property Measurement Standards incorporating International Property Measurement Standards (IPMS2 Residential). © nichecom 2022.
Produced for Robsons Lettings. REF: 819387



REGISTERED OFFICE 2-4 PACKHORSE ROAD, GERRARDS CROSS, BUCKINGHAMSHIRE, ENGLAND, SL9 7QE. COMPANY NO. 07557114. VAT NO. GB211239453

ROBSONS