



A two bedroom ground floor apartment set within an exclusive development
Uxbridge Road, Pinner, HA5 3LW

ROBSONS

Asking Price: £1,800 pcm

A two bedroom ground floor apartment set within an exclusive development

Uxbridge Road, Pinner, HA5 3LW

• GROUND FLOOR • VIDEO ENTRY SYSTEM • FITTED KITCHEN • LIVING/DINING ROOM • TWO BEDROOMS • FITTED WARDROBES • FAMILY BATHROOM • SECURE ALLOCATED PARKING • PRIVATE PATIO • UNFURNISHED

Description

A two bedroom ground floor apartment set within an exclusive development of 26 luxury apartments situated in a commanding central location and conveniently located between Pinner and Hatch End. The property comprises of entrance hallway, fitted kitchen, lounge, two bedrooms and a family bathroom. The property is offered unfurnished, with secure allocated parking and a private patio.

Location

Both Pinner and Hatch End can be found within a few moments from the development offering a variety of boutique shops, restaurants, coffee houses and popular supermarkets. Transport facilities include local bus links, the underground Metropolitan Line at Pinner station and the overground line at Hatch End Station, providing a fast and frequent service into Central London and beyond. The area is also well served for Schooling and recreational facilities

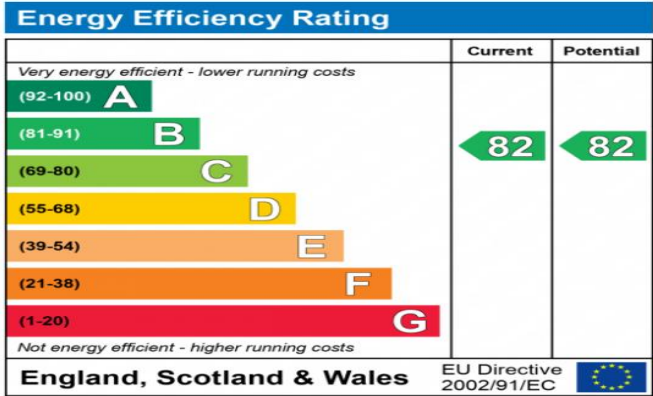




Additional Information

- Local Authority: London Borough of Harrow
- Council Tax Band:
- Deposit Amount:
- Reservation Payment:
- Energy Efficiency Rating: Band B
- Available Date: 30/01/2025

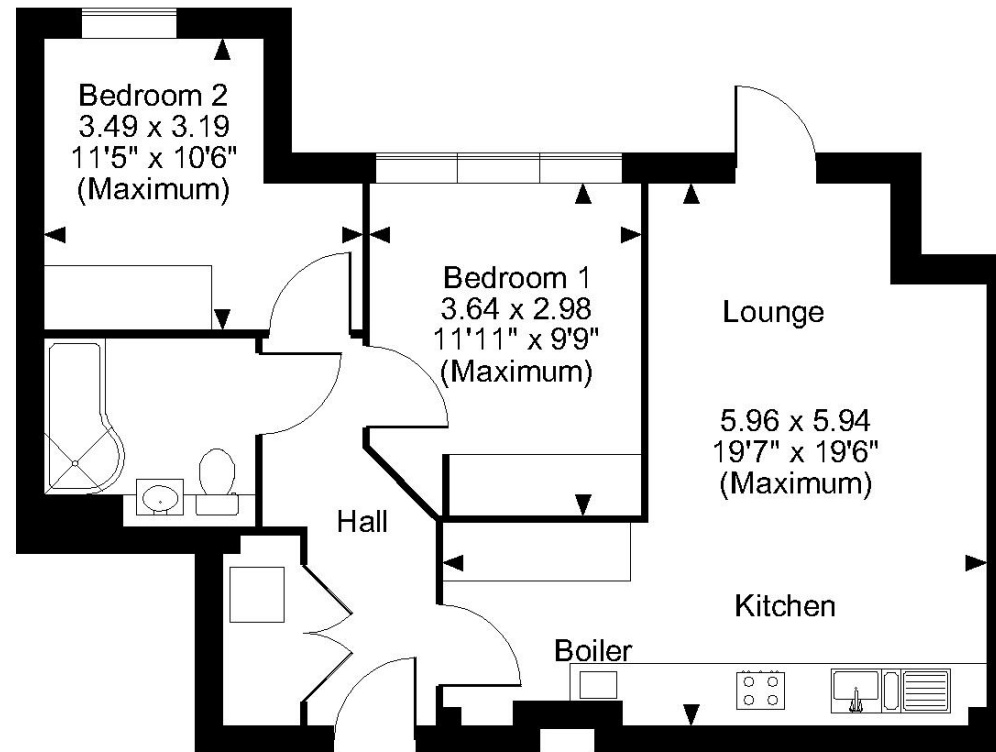
Council Tax Band: E



The energy efficiency rating is a measure of the overall efficiency of a home. The higher the rating the more energy efficient the home is and the lower the fuel bills will be.



Pinner Green, Pinner
Approximate Gross Internal Area
639 Sq Ft/59 Sq M



Flat 5

FOR ILLUSTRATIVE PURPOSES ONLY - NOT TO SCALE

The position & size of doors, windows, appliances and other features are approximate only.

© ehouse. Unauthorised reproduction prohibited. Drawing ref. dig/8478777/SS