



A four bedroom detached family home in a sought after location
Albury Drive,Pinner, HA5 3RH



Asking Price: £2,995 pcm

A four bedroom detached family home in a sought after location

Albury Drive, Pinner, HA5 3RH

• ENTRANCE HALL • LIVING ROOM • STUDY • KITCHEN • CLOAKROOM • FOUR BEDROOMS ONE WITH ENSUITE SHOWER • BATHROOM • REAR GARDEN • GARAGE • DRIVEWAY PARKING • UNFURNISHED

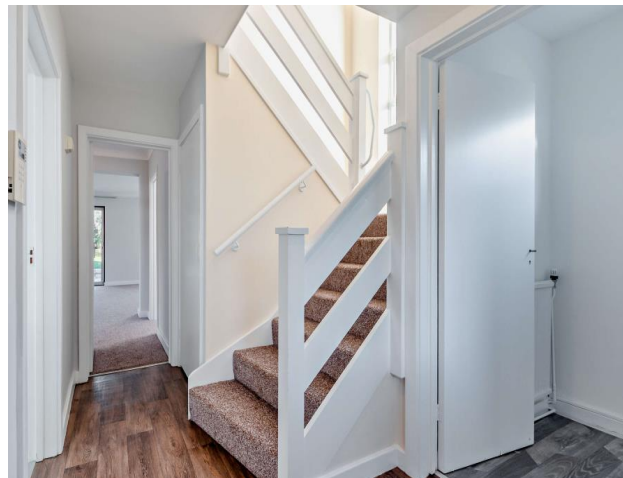
Description

A beautifully presented, large four bed detached house that has been completely refurbished throughout. The accommodation comprises of a large modern kitchen, two reception rooms and a ground floor WC. To the first floor there are four good sized bedrooms with the master benefitting from an en suite bathroom.

**** An advance reservation payment of one weeks rent is required to secure the property ****

Location

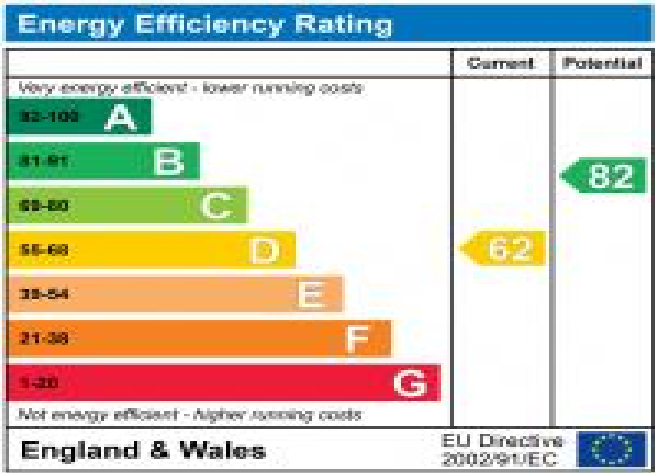
Albury Drive is a peaceful, tree-lined road just moments from both Hatch End and Pinner's boutique shops, restaurants and popular supermarkets. Transport facilities include local bus links and both Northwood Hills and Pinner stations.



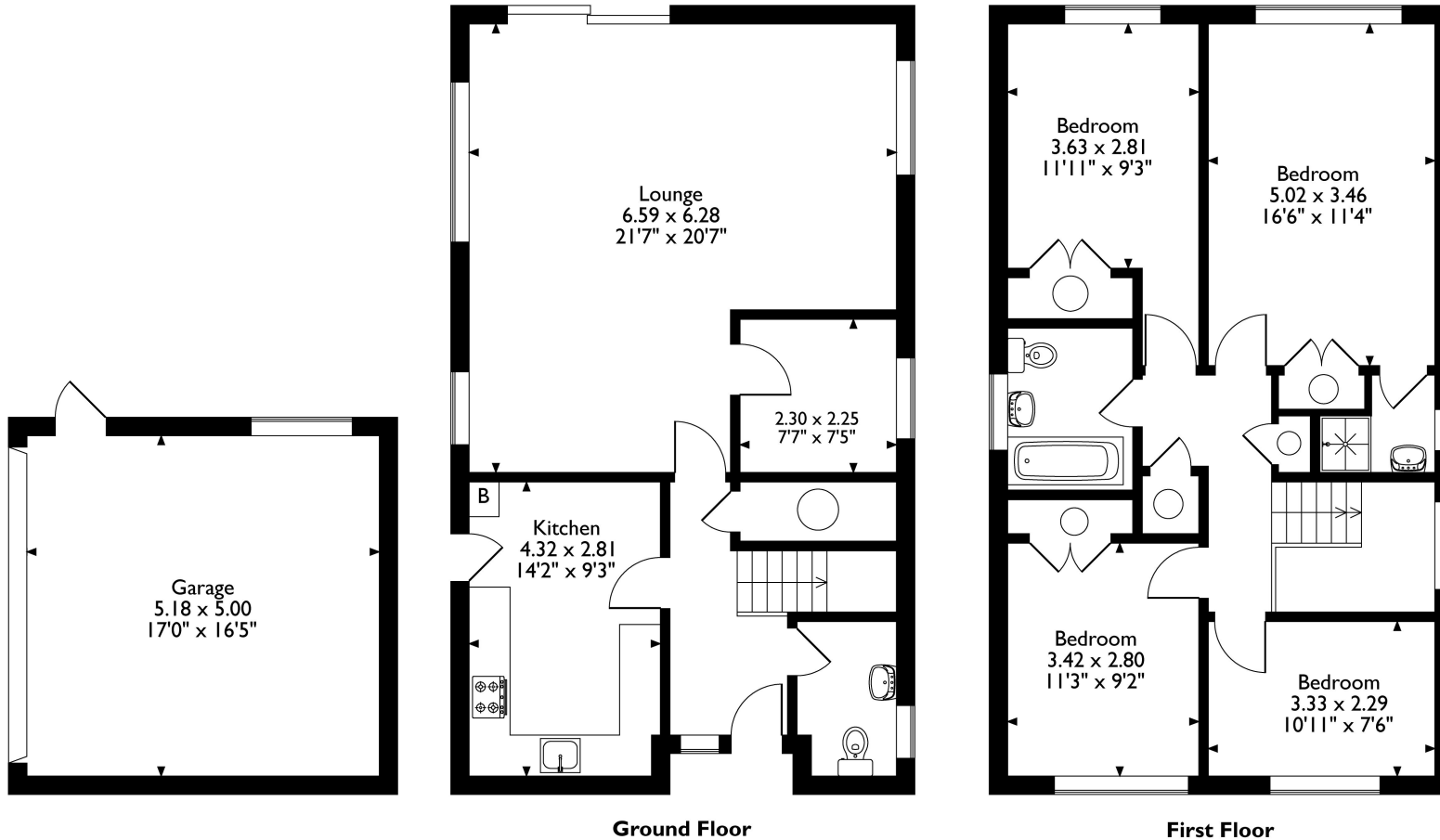


Additional Information

- Local Authority: Harrow
- Council Tax Band: G
- Deposit Amount: £3,923.00
- Reservation Payment: One weeks rent
- Energy Efficiency Rating: Band D
- Available Date: 15/01/2025



Albury Drive, Pinner, HA5 3RQ
 Approximate Gross Internal Area
 Main House = 137 Sq M/1475 Sq Ft
 Garage = 26 Sq M/280 Sq Ft
 Total = 163 Sq M/1755 Sq Ft



Please note that the location of doors, windows and other items are approximate and this floorplan is to be used for illustrative purposes only. Unauthorized reproduction is prohibited.



REGISTERED OFFICE 2-4 PACKHORSE ROAD, GERRARDS CROSS, BUCKINGHAMSHIRE, ENGLAND, SL9 7QE. COMPANY NO. 07557114. VAT NO. GB211239453