



A modern, spacious four bedroom family home conveniently located  
Birch Park, Harrow, HA3 6SP

**ROBSONS**



**Asking Price: £2,950 pcm**

## **A modern, spacious four bedroom family home conveniently located**

Birch Park, Harrow, HA3 6SP

---

• ENTRANCE HALL • THREE RECEPTION ROOMS • KITCHEN • UTILITY ROOM • CLOAKROOM • FOUR BEDROOMS ONE WITH ENSUITE FACILITIES • FAMILY BATHROOM • REAR GARDEN • GARAGE • DRIVEWAY • FURNISHED

---

### **Description**

A modern and spacious four bedroom, two bathroom detached house situated midway between Hatch End and Stanmore and within easy reach of local shops and transport. Internally offering on the ground floor an entrance hallway, cloakroom, lounge, dining room, study, reception room and fitted kitchen with Granite worktops, appliances and utility room. To the first floor are four good size bedrooms, the master with ensuite bathroom and a family bathroom. Externally offering private rear garden and a driveway with ample off street parking. Benefits include Gas central heating and double glazing.

\*\* An advance reservation payment of one weeks rent is required to secure the property \*\*

### **Location**

Situated on a popular road with easy access to local schools, Hatch End and Harrow can be found both equally close by offering a variety of boutique shops, restaurants, coffee houses and popular supermarkets. Transport facilities include local bus links and the Overground Line at Headstone Lane train providing frequent service into the heart of Central London and beyond. The area is well served for primary and secondary schooling, children's parks/playgrounds and recreational facilities.

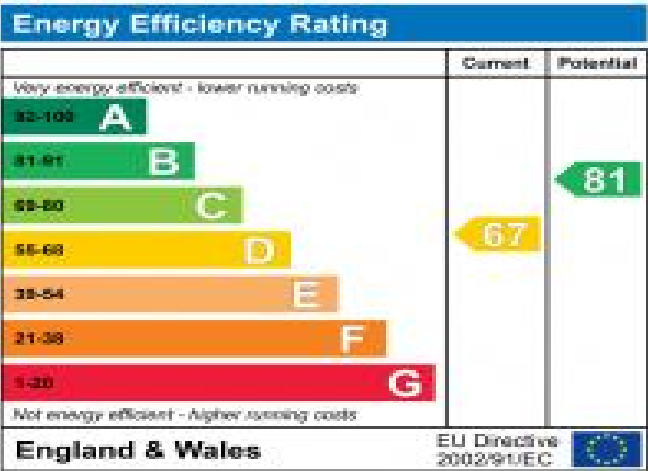




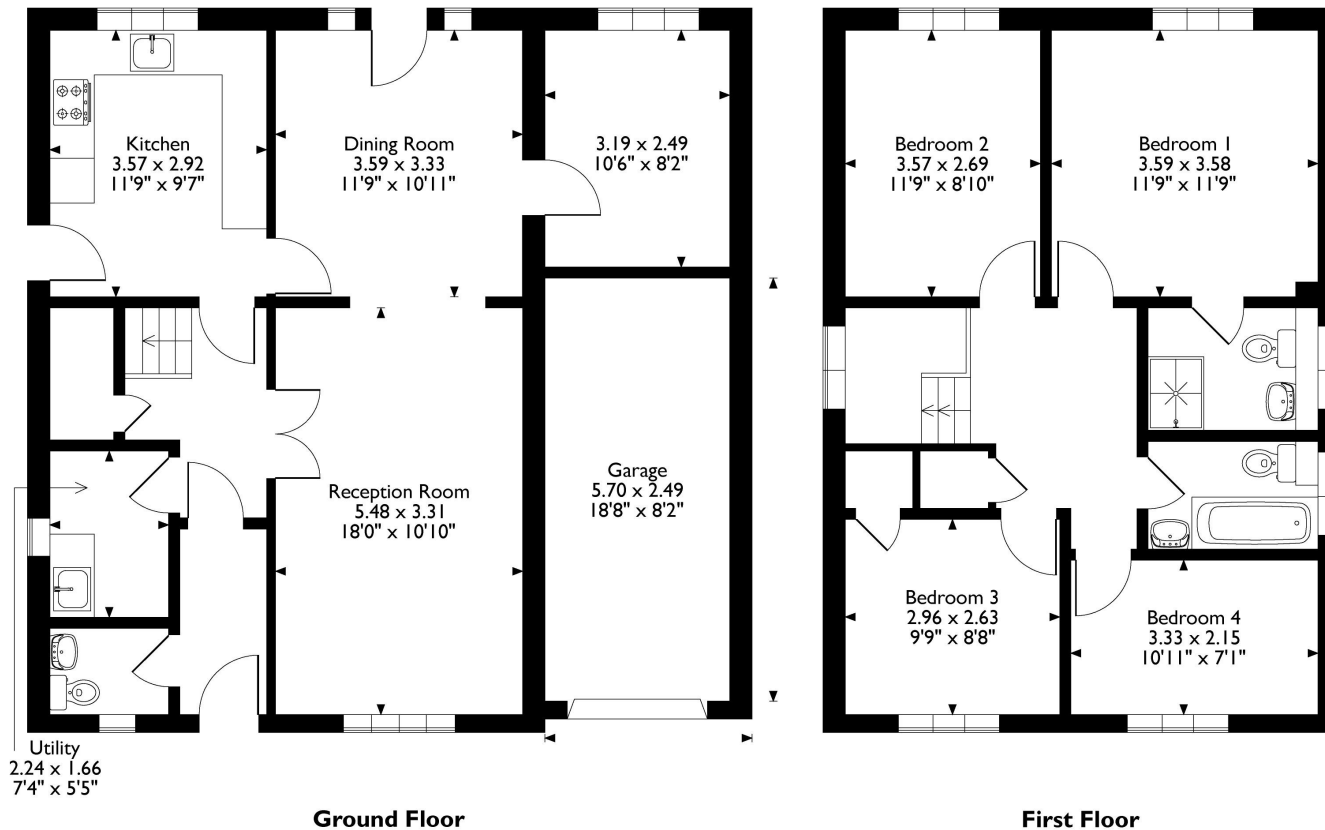


**Additional Information**

- Local Authority: Harrow
- Council Tax Band: G
- Deposit Amount: £3,403.00
- Reservation Payment: One weeks rent
- Energy Efficiency Rating: Band D
- Available Date: 13/09/2024



Birch Park, Harrow, HA3 6SP  
 Approximate Gross Internal Area  
 Main House = 127 Sq M/1367 Sq Ft  
 Garage = 14 Sq M/151 Sq Ft  
 Total = 141 Sq M/1518 Sq Ft



Please note that the location of doors, windows and other items are approximate and this floorplan is to be used for illustrative purposes only. Unauthorized reproduction is prohibited.



REGISTERED OFFICE 2-4 PACKHORSE ROAD, GERRARDS CROSS, BUCKINGHAMSHIRE, ENGLAND, SL9 7QE. COMPANY NO. 07557114. VAT NO. GB211239453