



A two bedroom apartment set within a modern gated development  
Cottage Close, Harrow, Middlesex HA2 0HA

**ROBSONS**

**Asking Price: £1,595 pcm**

## **A two bedroom apartment set within a modern gated development**

Cottage Close, Harrow, Middlesex HA2 0HA

---

- SECURE GATED DEVELOPMENT
- SECURE UNDERGROUND ALLOCATED PARKING
- FULLY EQUIPED 24/7 GYMNASIUM
- CONCIERGE SERVICE
- LIFT TO ALL FLOORS
- OPEN PLAN LOUNGE & KITCHEN
- MASTER BEDROOM WITH ENSUITE
- TWO DOUBLE BEDROOMS
- EXCELLENT LOCATION
- SECURE INTERCOM SYSTEM
- PART FURNISHED

---

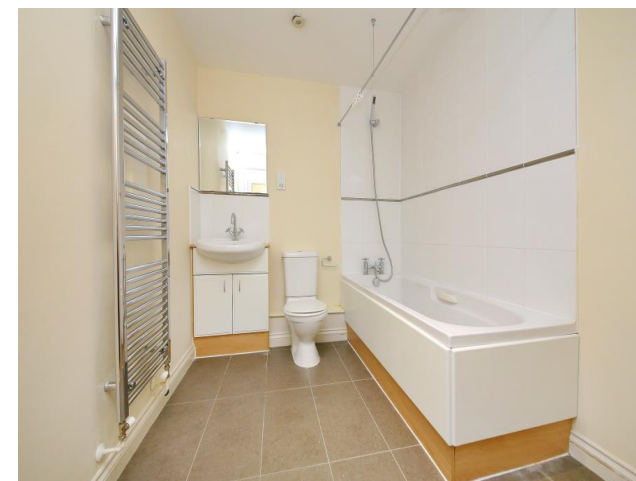
### **Description**

A well presented two double bedroom apartment set within this modern gated development on Harrow on the Hill. The property comprises of open plan lounge & kitchen, two bedrooms, master bedroom with ensuite and a bathroom. The property is offered part furnished with secure entry phone system, access to a fully equipped 24/7 Gym and allocated parking in a sought after location.

**\*\* A holding payment of £368.00 is required to secure this property, which is equivalent to one weeks rent\*\***

### **Location**

Harrow on the Hill is also well known for the excellent private, state and church schools in the area plus some delightful open spaces and comprehensive amenities including a nearby Waitrose supermarket and 2 covered shopping centres in Harrow town centre approximately 1/2 a mile away.





### Additional Information

- Local Authority: London Borough of Harrow
- Council Tax Band: E
- Deposit Amount: £1,840.00
- Reservation Payment: One weeks rent
- Energy Efficiency Rating: Band B
- Available Date: 20/07/2023





Middlesex | Hertfordshire | Buckinghamshire



REGISTERED OFFICE 2-4 PACKHORSE ROAD, GERRARDS CROSS, BUCKINGHAMSHIRE, ENGLAND, SL9 7QE. COMPANY NO. 07557114. VAT NO. GB211239453