



A two bedroom ground floor maisonette with a private rear garden
Kingsley Road, Pinner, Middlesex HA5 5RB

ROBSONS

Asking Price: £1,750 pcm

A two bedroom ground floor maisonette with a private rear garden

Kingsley Road, Pinner, Middlesex HA5 5RB

• GROUND FLOOR FLAT • ENTRANCE HALLWAY • OPEN PLAN KITCHEN/DINING/LIVING ROOM • ONE DOUBLE BEDROOM • SECOND BEDROOM • FAMILY BATHROOM • GARDEN • ON STREET PARKING • UNFURNISHED

Description

A two bedroom, ground floor maisonette with a private rear garden, available to the market. The property comprises of an entrance hall leading to a contemporary kitchen/dining/living room with a well-equipped kitchenette. There is a front aspect double bedroom, a second bedroom and a three-piece family bathroom. Externally there is a private rear garden that is part lawn and part decking.

****An advance reservation payment of one weeks rent is required to secure this property****

Location

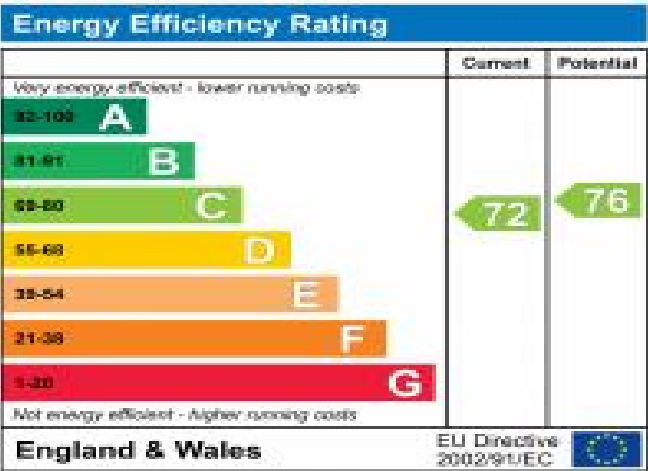
Situated off Melrose Road just a short distance from North Harrow and Pinner high streets which both offer a variety of shopping facilities, restaurants, coffee houses and popular supermarkets. For commuters, nearby North Harrow and Pinner underground stations provide a frequent service into London via the Metropolitan Line, with easy access to local bus routes also available. Alternatively, the Overground can be accessed at nearby Hatch End station. The area is well served by primary and secondary schooling with both St John Fisher Primary School and Nower Hill High School within walking distance. There are plenty of children's parks / playgrounds and recreational facilities within the area.





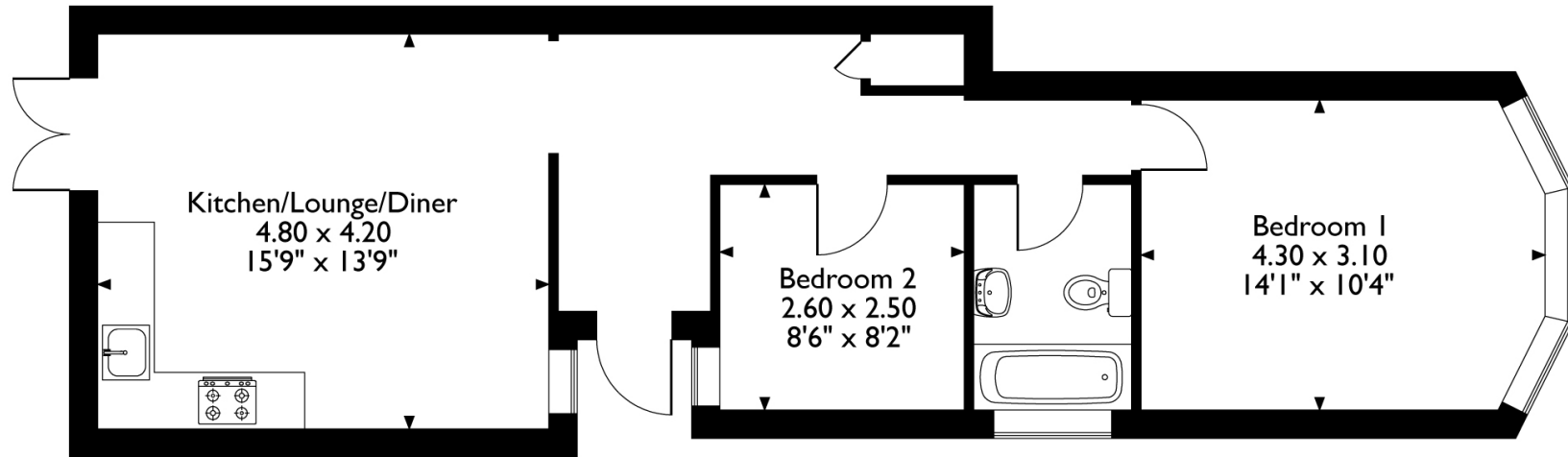
Additional Information

- Local Authority: Harrow
- Council Tax Band: C
- Deposit Amount: £2,076.00
- Reservation Payment: One weeks rent
- Energy Efficiency Rating: Band C
- Available Date: 29/02/2024



Kingsley Road, Pinner

Approximate Gross Internal Area 54 Sq M/587 Sq Ft



Please note that the location of doors, windows and other items are approximate and this floorplan is to be used for illustrative purposes only. Unauthorized reproduction is prohibited.



REGISTERED OFFICE 2-4 PACKHORSE ROAD, GERRARDS CROSS, BUCKINGHAMSHIRE, ENGLAND, SL9 7QE. COMPANY NO. 07557114. VAT NO. GB211239453