



A two bedroom first floor maisonette with a private garden to the rear
Holwell Place, Pinner, HA5 1DX

ROBSONS

Asking Price: £1,750 pcm

A two bedroom first floor maisonette with a private garden to the rear

Holwell Place, Pinner, HA5 1DX

-
- ENTRANCE HALL AND STAIRS TO FIRST FLOOR • HALL • LIVING ROOM • KITCHEN • TWO BEDROOMS • BATHROOM • PRIVATE REAR GARDEN • UNFURNISHED
-

Description

A modern, well presented first floor two bedroom maisonette situated in a cul-de-sac being just 0.5 miles and within easy walking distance of Pinner Village and Pinner Metropolitan Line station. Internally offering a large lounge, fitted kitchen with appliances, bathroom with bath and shower cubicle, main bedroom with fitted wardrobes and a second good size bedroom. Externally offering a private rear garden. The flat is offered unfurnished and available immediately.

** An advance reservation payment of one weeks rent is required to secure the property **

Location

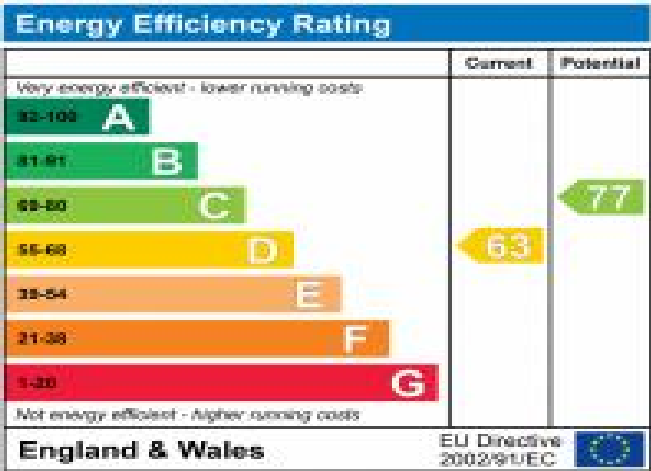
The property is located moments from an excellent range of boutique shops and pavement cafés and restaurants in Pinner, while also being situated close to the open spaces of Pinner Memorial Park. Local transport links are available nearby from Pinner Underground Station (Metropolitan Line).





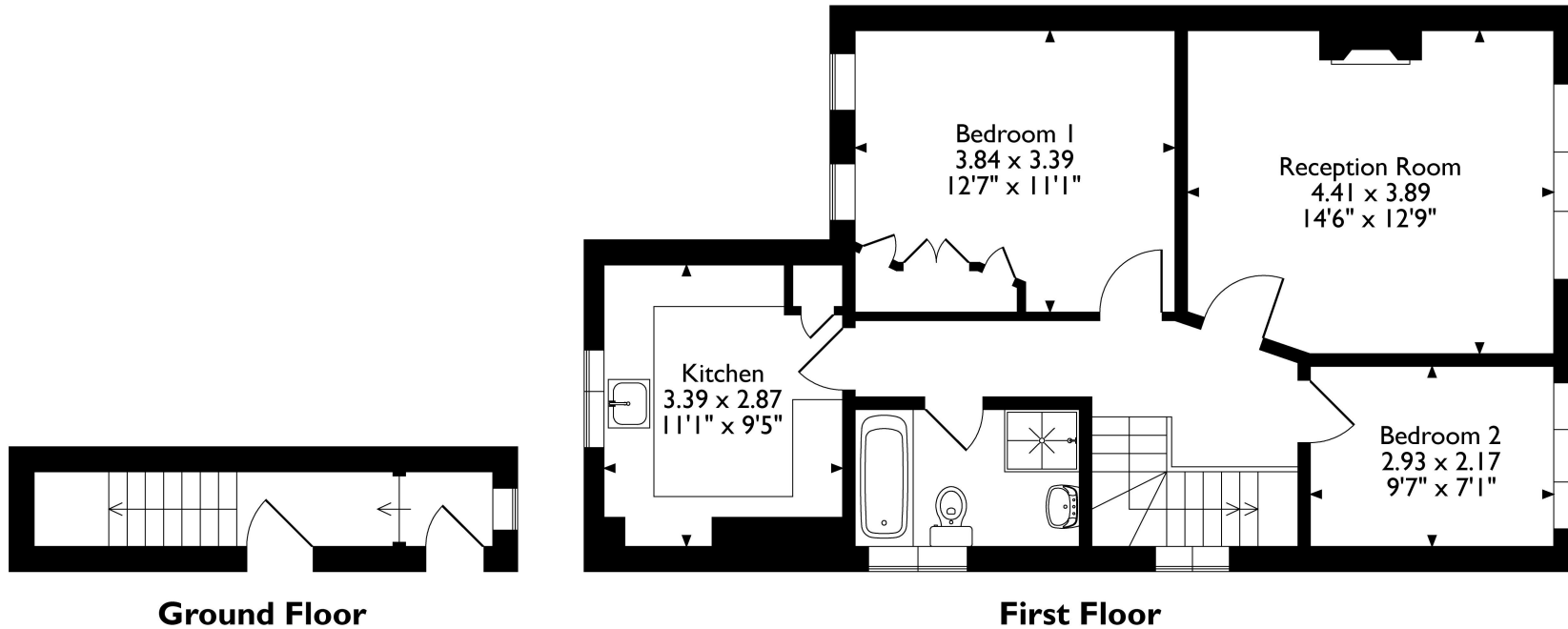
Additional Information

- Local Authority: Harrow
- Council Tax Band: C
- Deposit Amount: £2,019.00
- Reservation Payment: One weeks rent
- Energy Efficiency Rating: Band D
- Available Date: 17/05/2024



Holwell Place, Pinner, HA5 1DX

Approximate Gross Internal Area 67 Sq M/721 Sq Ft



Please note that the location of doors, windows and other items are approximate and this floorplan is to be used for illustrative purposes only. Unauthorized reproduction is prohibited.



REGISTERED OFFICE 2-4 PACKHORSE ROAD, GERRARDS CROSS, BUCKINGHAMSHIRE, ENGLAND, SL9 7QE. COMPANY NO. 07557114. VAT NO. GB211239453