



A well presented two double bedroom duplex maisonette
Westfield Park, Pinner, Middlesex HA5 4LB

ROBSONS

Asking Price: £1,700 pcm

A well presented two double bedroom duplex maisonette

Westfield Park,Pinner, Middlesex HA5 4LB

-
- DUPLEX MAISONETTE • MODERN KITCHEN • LOUNGE/DINER • TWO DOUBLE BEDROOMS • FAMILY BATHROOM • ALLOCATED PARKING • CONVENIENTLY LOCATED • UNFURNISHED
-

Description

A well-presented two double bedroom, duplex maisonette. The accommodation comprises an entrance porch with stairs leading to the first floor landing which provides access to a modern fitted kitchen, a generous lounge/diner with a private balcony and a family bathroom. The second floor hosts two double bedrooms with one benefiting from fitted wardrobes, and the other a built-in storage cupboard. The property is offered unfurnished with the added benefit of an allocated off-street parking space close to the property and double-glazing throughout.

****An advance reservation payment of one weeks rent is required to secure this property****

Location

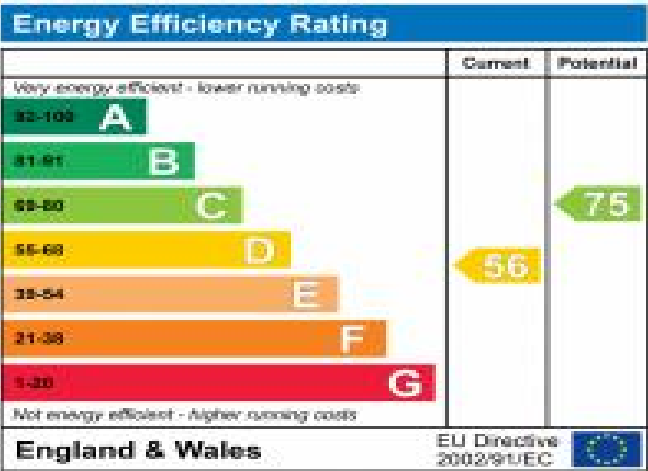
Nestled within Westfield Park off Uxbridge Road, this property is just a stone's throw from Hatch End high street which offers a variety of shopping facilities, restaurants, and popular coffee houses. For commuters, there are a number of local bus routes as well as the Overground services at Hatch End station, or the Metropolitan Line at nearby Pinner station. The area is well served by primary and secondary schooling (Grimsdyke catchment), children's parks/play areas, and recreational facilities.





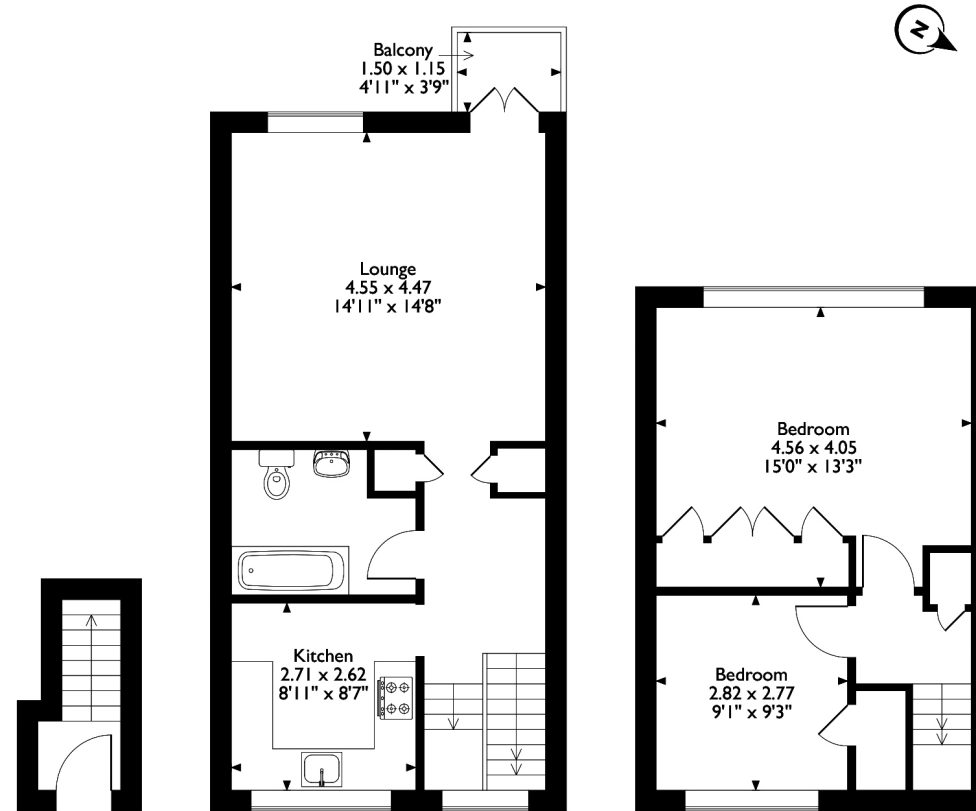
Additional Information

- Local Authority: Harrow
- Council Tax Band: D
- Deposit Amount: £2,019.00
- Reservation Payment: One weeks rent
- Energy Efficiency Rating: Band D
- Available Date: 10/04/2024



Claire Court, Westfield Park, Pinner

Approximate Gross Internal Area
78 Sq M/839 Sq Ft



Ground Floor

First Floor

Second Floor

Please note that the location of doors, windows and other items are approximate and this floorplan is to be used for illustrative purposes only. Unauthorized reproduction is prohibited.



REGISTERED OFFICE 2-4 PACKHORSE ROAD, GERRARDS CROSS, BUCKINGHAMSHIRE, ENGLAND, SL9 7QE. COMPANY NO. 07557114. VAT NO. GB211239453