



A well maintained 3 bedroom family home in a sought after location  
Albury Drive, Pinner, Middlesex HA5 3RE

**ROBSONS**



**Asking Price: £2,500 pcm**

## **A well maintained 3 bedroom family home in a sought after location**

Albury Drive, Pinner, Middlesex HA5 3RE

---

• TWO RECEPTION ROOMS • WELL FITTED KITCHEN • THREE BEDROOMS • FAMILY BATHROOM • REAR GARDEN • GARAGE • OFF STREET PARKING • UNFURNISHED

---

### **Description**

A well-maintained three bedroom character home with modern interiors and a sizeable rear garden, situated on a popular road within easy reach of both Hatch End and Pinner's amenities. The ground floor comprises two generous reception rooms with one to the rear having access to the garden, and a well-equipped, modern fitted kitchen. To the first floor there are three good-size bedrooms and a luxury family bathroom. Externally the property offers a sizeable rear garden that is laid to lawn with a patio area. To the front there is a small front garden with a garage and off-street parking.

\*\* An advance reservation payment of one weeks rent is required to secure the property \*\*

### **Location**

Both Pinner and Hatch End offer a variety of shops, restaurants and transport facilities, which include the mainline train station at Hatch End providing frequent service to London Euston. Pinner is within 1 1/4 miles and offers a further choice of a number of quality shops, restaurants and supermarkets together with the Metropolitan Line Train station. There are a plethora of quality private and state schooling in the surrounding area. Central London is approximately 16 miles away. The M40, M1, A1, A41, M25 motorways are accessible.

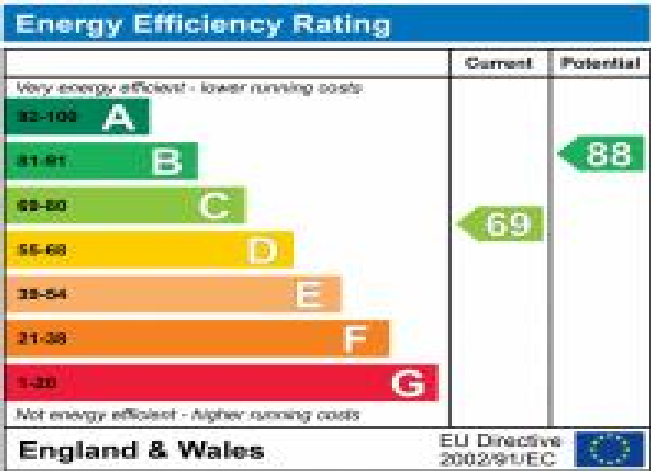






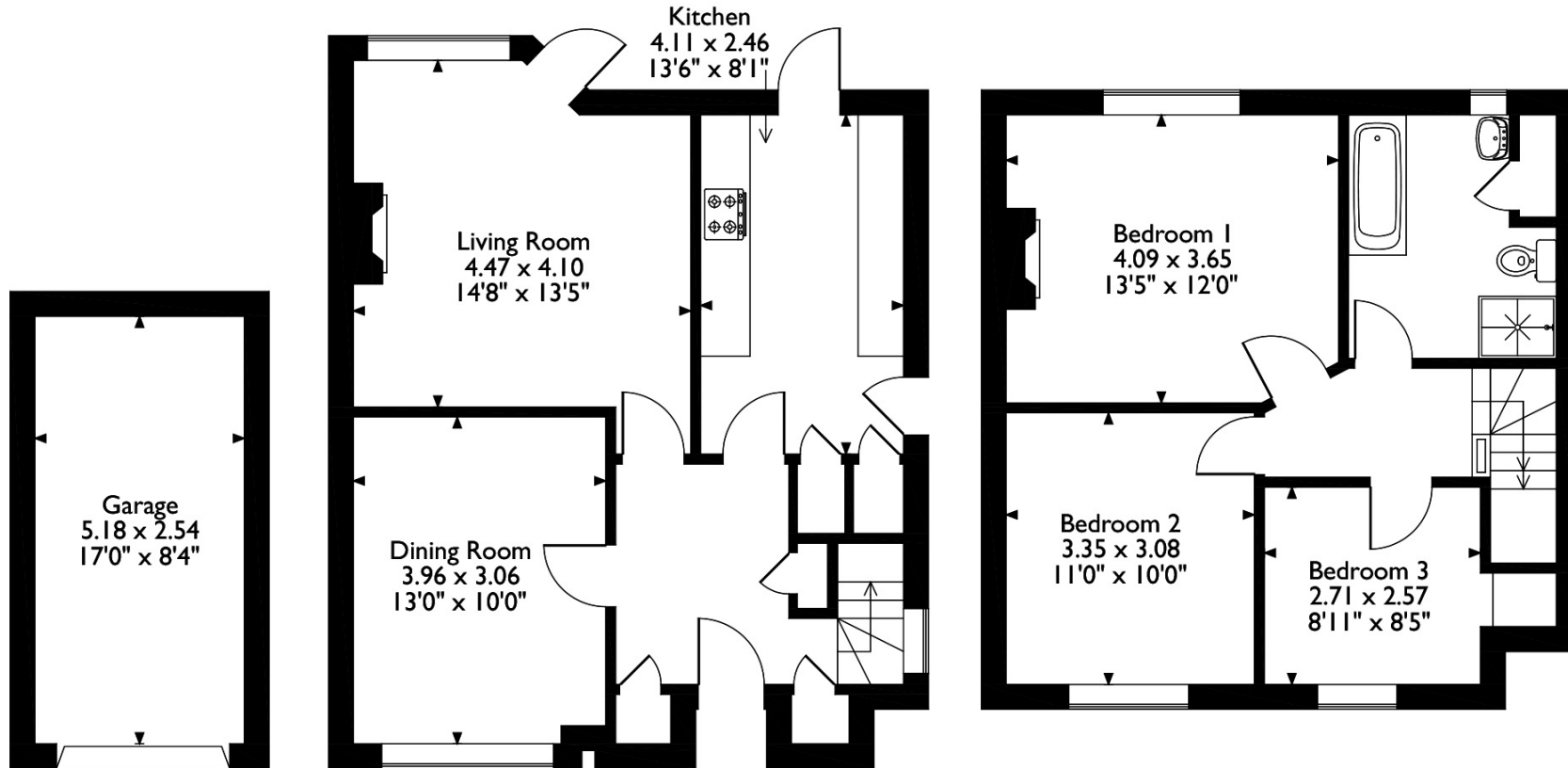
**Additional Information**

- Local Authority: Harrow
- Council Tax Band: F
- Deposit Amount: £2,884.00
- Reservation Payment: One weeks rent
- Energy Efficiency Rating: Band C
- Available Date: 02/11/2023



# Albury Drive, Pinner

Approximate Gross Internal Area  
 Main House = 96 Sq M/1033 Sq Ft  
 Garage = 13 Sq M/140 Sq Ft  
 Total = 109 Sq M/1173 Sq Ft



**Ground Floor**

**First Floor**

Please note that the location of doors, windows and other items are approximate and this floorplan is to be used for illustrative purposes only. Unauthorized reproduction is prohibited.



REGISTERED OFFICE 2-4 PACKHORSE ROAD, GERRARDS CROSS, BUCKINGHAMSHIRE, ENGLAND, SL9 7QE. COMPANY NO. 07557114. VAT NO. GB211239453

