



A well presented six bedroom family home in a sought after location  
Sylvia Avenue, Hatch End, Pinner, HA5 4QE

**ROBSONS**



**Asking Price: £3,400 pcm**

## **A well presented six bedroom family home in a sought after location**

Sylvia Avenue, Hatch End, Pinner, HA5 4QE

---

• GATED • THREE RECEPTION ROOMS • LUXURY KITCHEN • CLOAKROOM • FIRST FLOOR - MAIN BEDROOM SUITE • THREE FURTHER BEDROOMS • BATHROOM • SECOND FLOOR - TWO BEDROOMS • SHOWER ROOM • GARDEN • UNFURNISHED • GARAGE

---

### **Description**

An exceptionally spacious and extended six bedroom, three bathroom semi-detached family home with electric security gating and accommodation in excess of 2,300 sq ft. With a double aspect lounge, dining room, study and a modern fitted kitchen. To the first floor there is a principal bedroom suite has a luxury en-suite bathroom and dressing room. There are three further bedrooms and a modern family bathroom. To the second floor are two additional bedrooms. With state-of-the-art inclusions: video entry and biometric (fingerprint reader) for pedestrian gate and front door access, infrared security cameras to the front and back of the property.

**\*\* An advance reservation payment of one weeks rent is required to secure the property \*\***

### **Location**

Situated in a peaceful location just moments from Grimsdyke primary school and Hatch End's amenities. Hatch End offers a variety of boutique shops, restaurants, coffee houses and popular supermarkets. Transport facilities include local bus links and the Overground at Hatch End Station and the Metropolitan Line at Pinner Station, both providing a fast and frequent service into the heart of Central London and beyond. The area is well served for primary and secondary schooling, children's parks/playgrounds and recreational facilities.

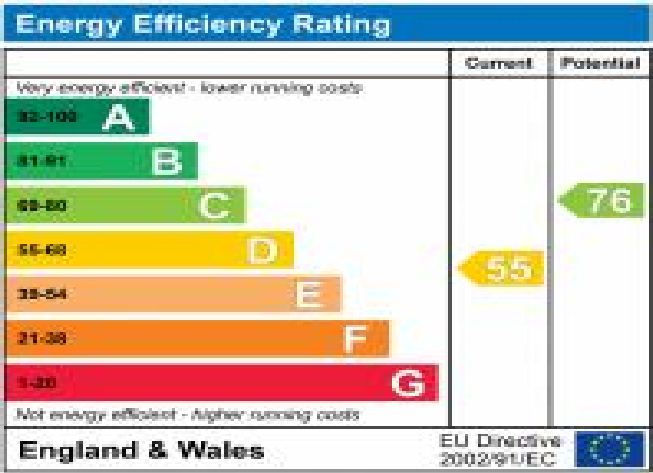




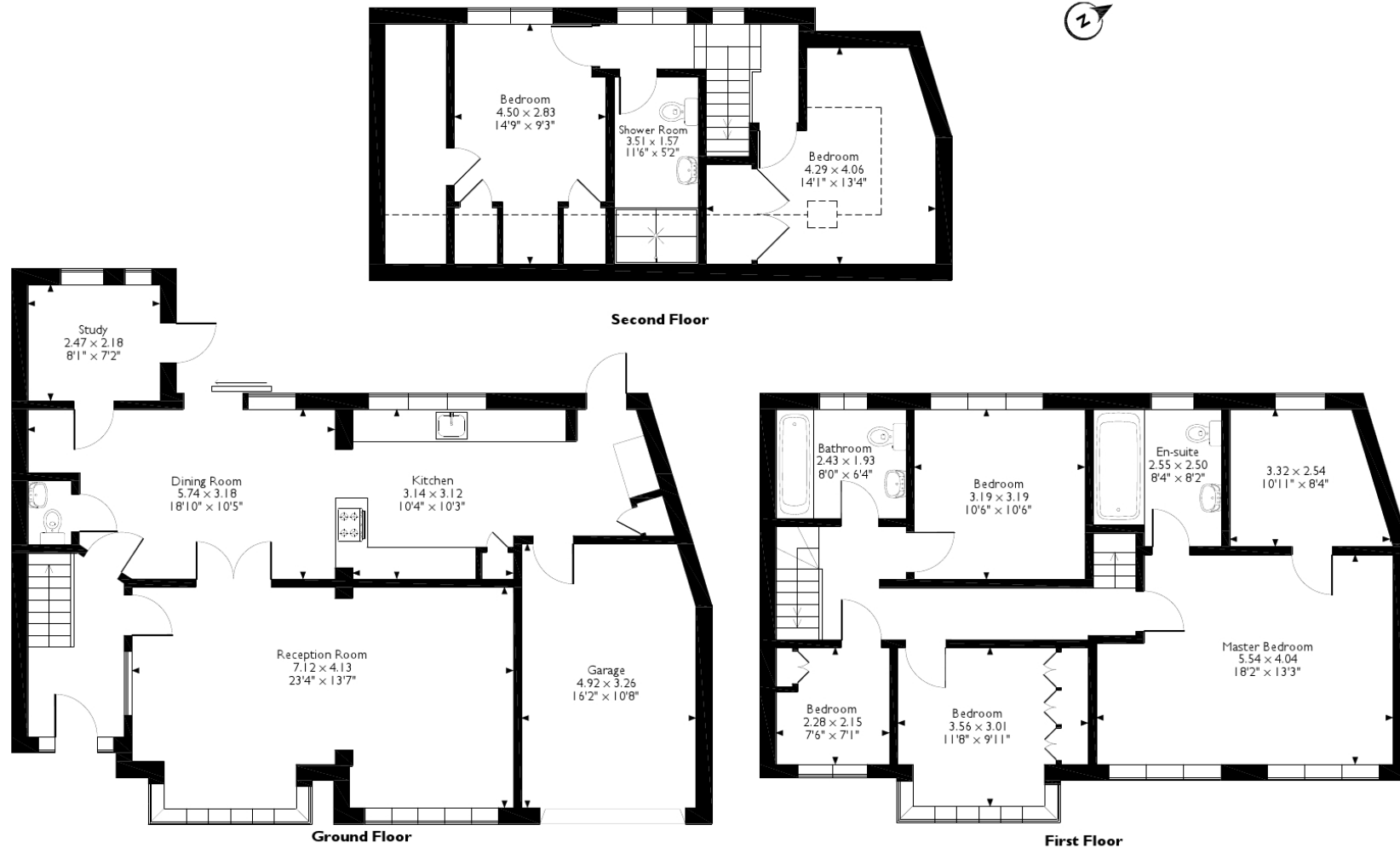


### Additional Information

- Local Authority: Harrow
- Council Tax Band: D
- Deposit Amount: £3,923.00
- Reservation Payment: One weeks rent
- Energy Efficiency Rating: Band D
- Available Date: 31/10/2025



Sylvia Avenue, Pinner  
Approximate Gross Internal Area  
216 Sq M/2315 Sq Ft



Please note that the location of doors, windows and other items are approximate and this floorplan is to be used for illustrative purposes only. Unauthorized reproduction is prohibited.



REGISTERED OFFICE 2-4 PACKHORSE ROAD, GERRARDS CROSS, BUCKINGHAMSHIRE, ENGLAND, SL9 7QE. COMPANY NO. 07557114. VAT NO. GB211239453