



2 Floors



3 Bedrooms



1 En suite

LYTTELTON THREE BEDROOM HOME

A three bedroom home with a substantial lounge and an impressive open plan kitchen / dining area with French doors leading to the rear garden. Upstairs boasts three generous bedrooms, the master bedroom benefits from an en suite shower room.

LYTTELTON THREE BEDROOM HOME

✦ DIMENSIONS

First Floor:

Bedroom 1

2.75m x 3.39m
9'0" x 11'1"

En Suite

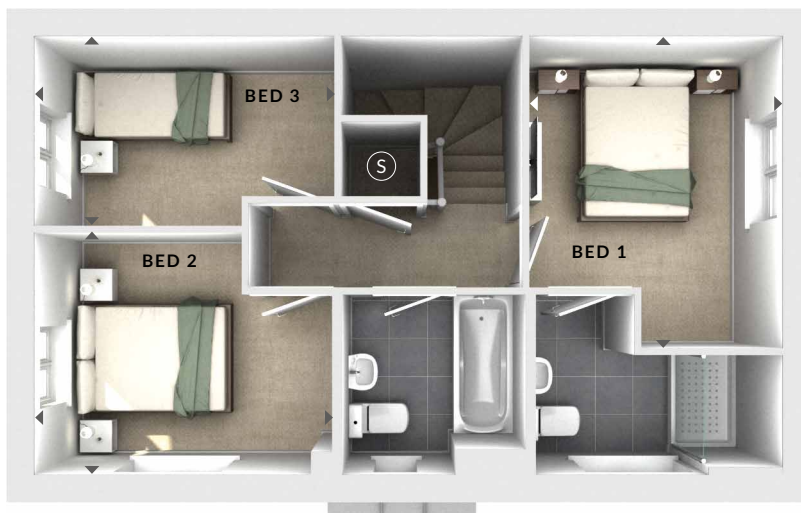
Bedroom 2

3.28m x 2.63m
10'9" x 8'7"

Bedroom 3

3.26m x 2.05m
10'8" x 6'9"

Bathroom



First Floor

Ground Floor:

Lounge

3.26m x 4.75m
10'8" x 15'7"

Kitchen / Dining

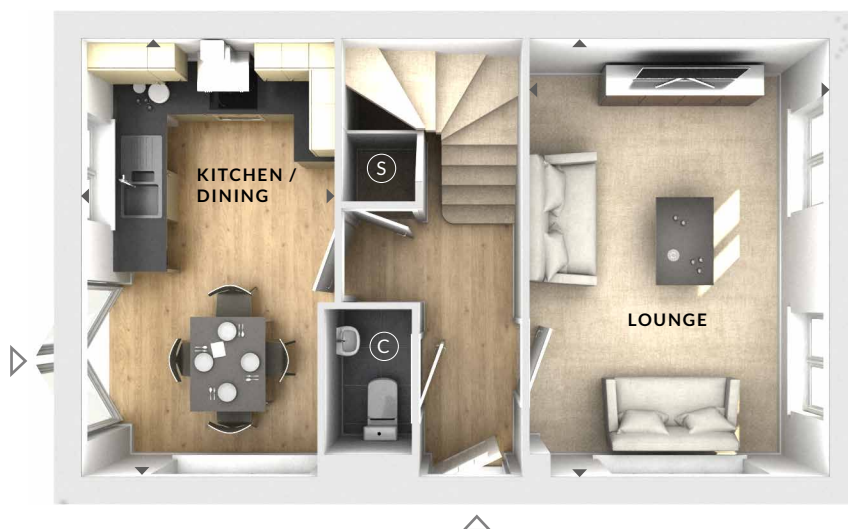
2.75m x 4.75m
9'0" x 15'7"

(S) Storage

(C) Cloaks

◀ ▶ Measurement Points

△ External Access



Ground Floor

© Bloor Homes
VT0100 QA807 6.4

These particulars are intended as a preliminary guide for prospective purchasers and should not be relied upon. The elevational treatment for individual house types shows a typical arrangement. Details of materials and design treatments may vary. Any artist impressions shown are not intended to represent any particular plot. Purchasers are advised to inspect the layout plan to establish the arrangement of the house and surrounding property. Internal layouts show a general arrangement which may vary from plot to plot. Room sizes given are approx. overall finished room sizes and subject to normal building tolerances (ie ± 75mm). In all instances purchasers are advised to inspect plot specific information available from our sales team. Nothing in these particulars or verbal assurance shall form or constitute part of any contract, and are given without any responsibility on behalf of Bloor Homes.

BLOOR HOMES