



Amberley Way, Sutton Coldfield - B74 3RN
£175,000



Amberley Way

Sutton Coldfield

Stepping inside, you are greeted by the entrance hallway with a large store cupboard. The accommodation continues with a spacious open plan lounge and kitchen area, thoughtfully designed to create space for living and dining. The property further benefits from two generously sized bedrooms, offering ample space for relaxation and rest. Completing the interior is a bathroom, adding to the comfort and functionality of this maisonette.

Moving beyond the interiors, the benefits of this property continue with its private rear garden, providing a retreat for outdoor relaxation and entertaining.







FEATURES:

- Ground floor maisonette
- Two spacious bedrooms
- Extended lease with 169 years remaining
- Highly popular location
- Open plan lounge/kitchen
- Bathroom
- Private rear garden
- Ideal first time buyer or investment purchase

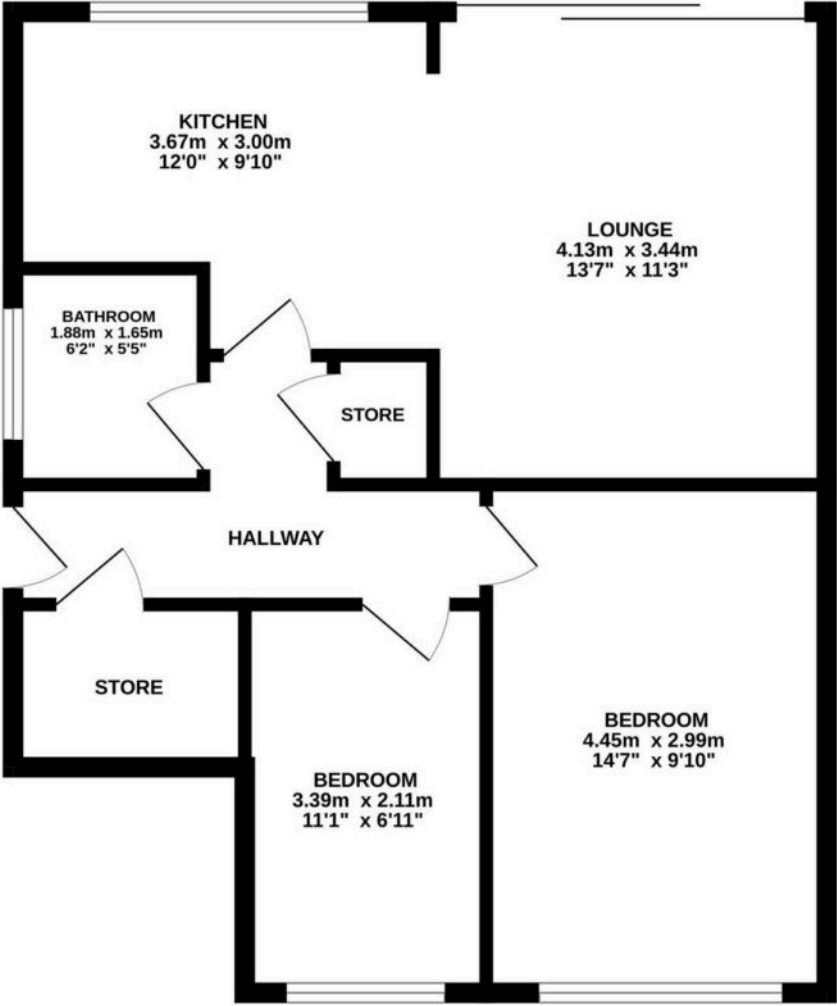
INTERESTED?

fouroaks@moorhouse-property.co.uk

0121 308 3355



GROUND FLOOR
56.9 sq.m. (612 sq.ft.) approx.



TOTAL FLOOR AREA : 56.9 sq.m. (612 sq.ft.) approx.
Whilst every attempt has been made to ensure the accuracy of the floorplan contained here, measurements of doors, windows, rooms and any other items are approximate and no responsibility is taken for any error, omission or mis-statement. This plan is for illustrative purposes only and should be used as such by any prospective purchaser. The services, systems and appliances shown have not been tested and no guarantee as to their operability or efficiency can be given.
Made with Metropix ©2025

