



**Silverstone Drive, Streetly- B74 2BD**

**£320,000**

 **MOORHOUSE**





## Silverstone Drive

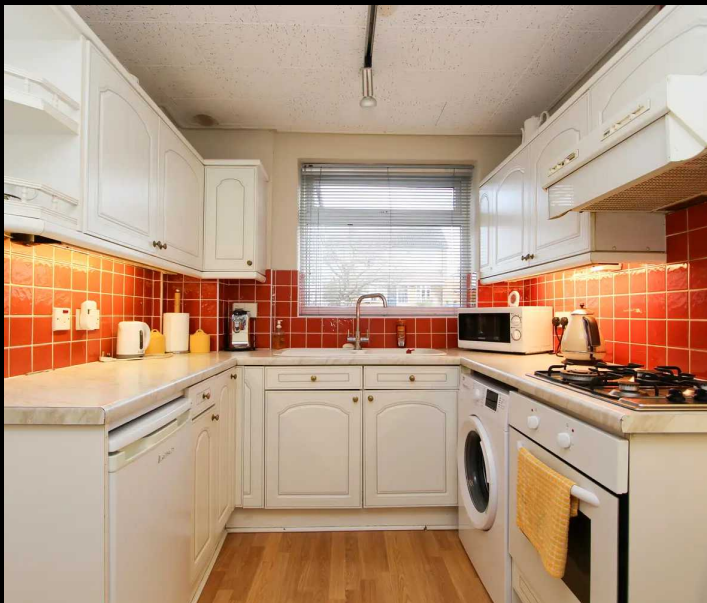
Streetly, Sutton Coldfield

A charming three bedroom end of terrace house, and is located in an excellent and well-regarded neighbourhood. Situated within walking distance to a highly regarded primary school, it is the perfect home for families seeking a convenient and family-friendly location.

### THE PROPERTY....

Upon entering the property, you are greeted by a through hallway which in turn leads to the spacious living room that exudes warmth and comfort. This area is perfect for spending quality time with loved ones or simply unwinding after a long day. The fitted breakfast kitchen is practical and well designed, offering ample space for cooking and dining.

The property boasts three well-proportioned bedrooms, ensuring everyone in the household has their own private sanctuary. The family shower room completes the first floor accommodation. This property also features a garage and a block-paved driveway, ensuring ample parking space for residents and visitors alike.







## Silverstone Drive

Streetly, Sutton Coldfield

The private rear garden is the jewel of this property, providing an oasis for relaxation and outdoor activities. Whether it's indulging in a morning coffee on the patio or hosting a summer barbeque, this outdoor space offers endless possibilities. The garden itself has a neat lawn, with lush greenery and vibrant flowers providing a picturesque backdrop. It is the perfect space for families with children or pets, allowing them to play freely and safely.

This property is an ideal first-time buyer's home, offering great potential for those looking to make it their own. With its excellent location, ample living space, and private outdoor sanctuary, it truly is a haven for those looking to establish their roots in a thriving community. Don't miss the opportunity to make this house your home and create cherished memories for years to come.











## FEATURES:

- Three Bedrooms
- Excellent and well regarded location
- Walking distance to highly regarded Primary School
- Spacious living room
- Fitted breakfast kitchen
- Shower room
- Garage and block paved driveway
- Private rear garden

## INTERESTED?

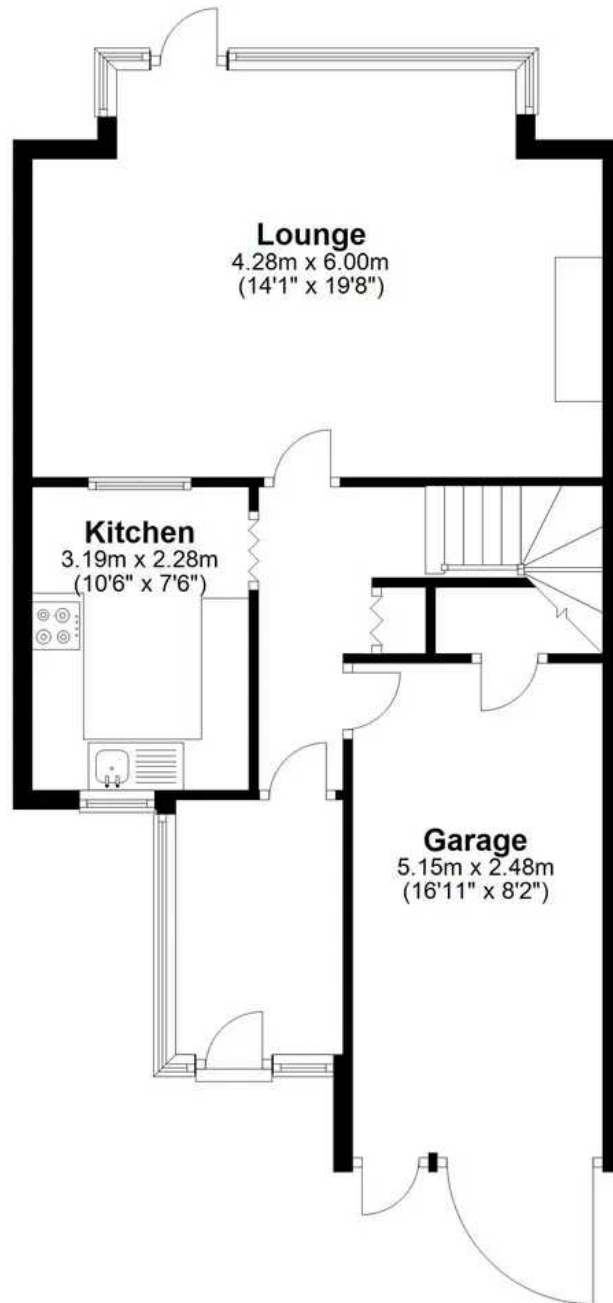
[fouroaks@moorhouse-property.co.uk](mailto:fouroaks@moorhouse-property.co.uk)

0121 308 3355



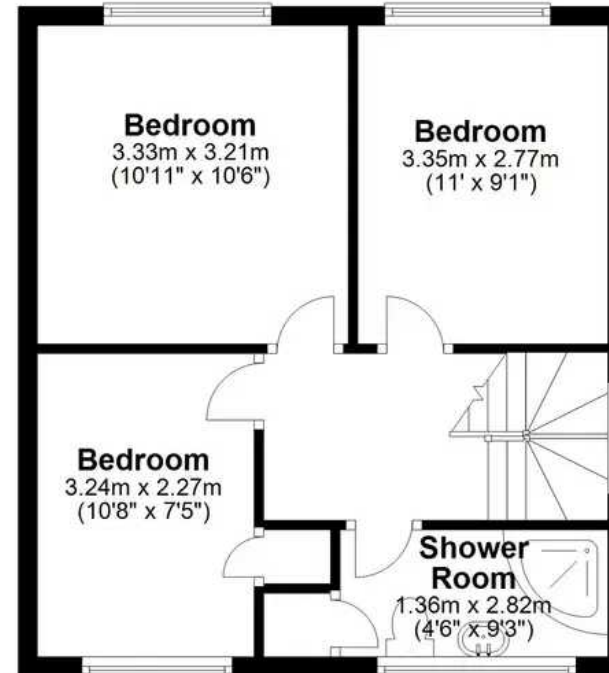
## Silverstone Drive

Approx. 57.7 sq. metres (620.8 sq. feet)



## First Floor

Approx. 40.2 sq. metres (432.6 sq. feet)



Total area: approx. 97.9 sq. metres (1053.4 sq. feet)

