



Foresters Way, Sutton Coldfield - B75 5UF

£525,000

 **MOORHOUSE**



9 Foresters Way

Sutton Coldfield, B75 5UF

A spacious four bedroom, two bathroom detached family home, located in a peaceful street within the highly sought-after Harvest Fields development. With its modern design and contemporary features, this home is perfect for a growing family.

A great location with Harvest Field Centre at the heart of the development, and within walking distance of the excellent Little Sutton School.

The Property....

You are greeted by a spacious hallway that leads to the heart of the house. The ground floor offers an attractive lounge and dining room, perfect for entertaining guests or enjoying family gatherings. A highlight of this property is the spacious breakfast kitchen, equipped with modern appliances and ample storage space. This area is flooded with natural light, making it the ideal spot to enjoy breakfast or relax with a cup of coffee. Adjoining the kitchen is a delightful conservatory, offering additional living space and providing panoramic views of the garden.

The first floor comprises four generously sized bedrooms, including a master bedroom with an en-suite, and a family bathroom.



- Four Bedrooms, en-suite, and Family bathroom
- Sought after modern development



Foresters Way

Sutton Coldfield, B75 5UF

Moving outside, the property boasts pleasant gardens, ideal for outdoor relaxation or al-fresco dining during the warmer months. This space offers privacy, making it the perfect place to unwind after a long day. This property also benefits from a garage and driveway, ensuring ample parking for multiple vehicles.

This property is ideally located for families with children. The local area offers an array of amenities, and leisure facilities, all within easy reach. Additionally, excellent transport links ensure easy access to nearby towns and cities, making this property an excellent choice for those needing to commute for work or leisure.

In summary, this charming 4 bedroom detached house offers a perfect blend of modern living and comfort. Its spacious rooms, with its convenient location and close proximity to schools makes this this home an ideal setting for families. Don't miss the opportunity to make this house YOUR home.







FEATURES:

- Four Bedrooms, en-suite, and Family bathroom
- Sought after modern development
- Attractive lounge and dining room
- Spacious breakfast kitchen
- Conservatory
- Garage and driveway
- Pleasant gardens
- Close to highly regarded schools
- EPC rating - C

INTERESTED?

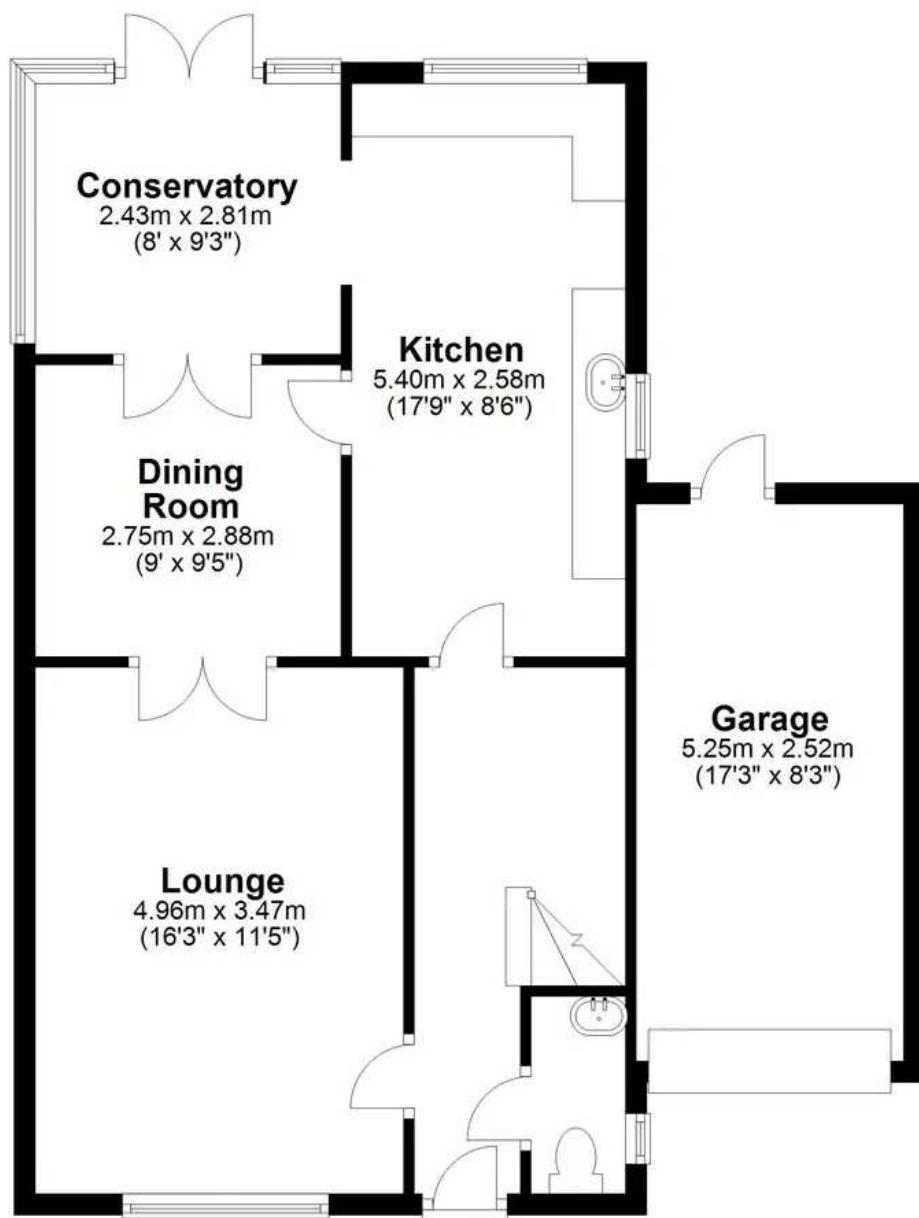
fouroaks@moorhouse-property.co.uk

0121 308 3355



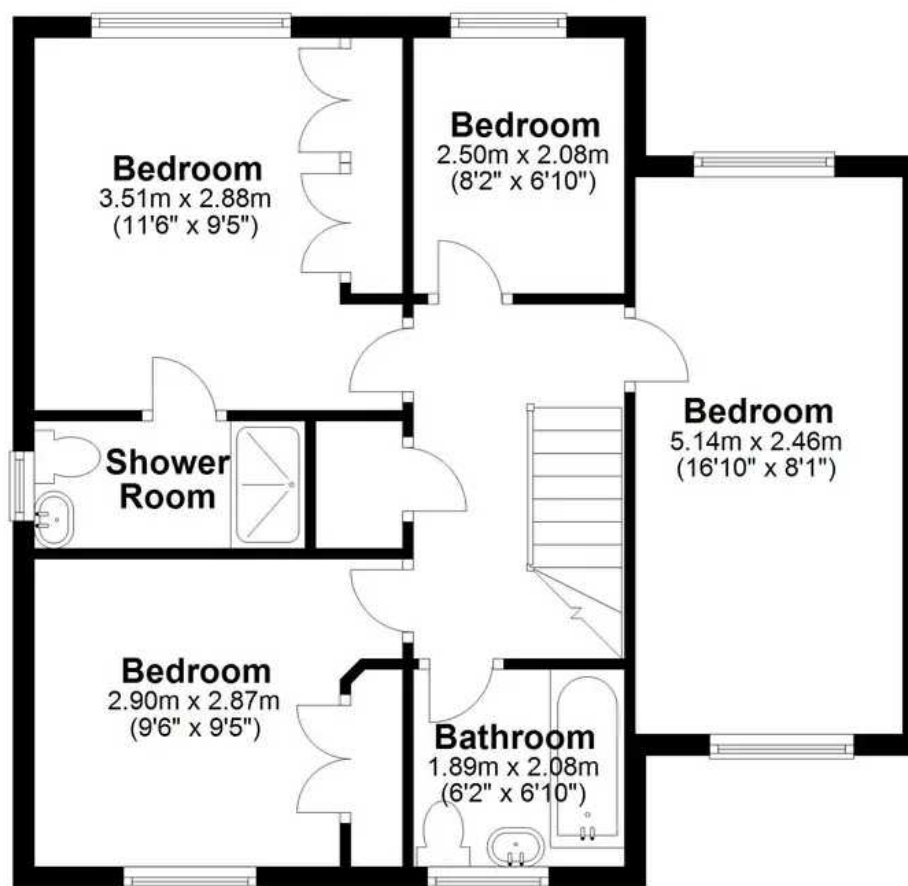
Floor Plan

Approx. 71.4 sq. metres (768.5 sq. feet)



First Floor

Approx. 57.2 sq. metres (616.0 sq. feet)



Total area: approx. 128.6 sq. metres (1384.5 sq. feet)

