

Bittaford Wood, Ivybridge, Devon

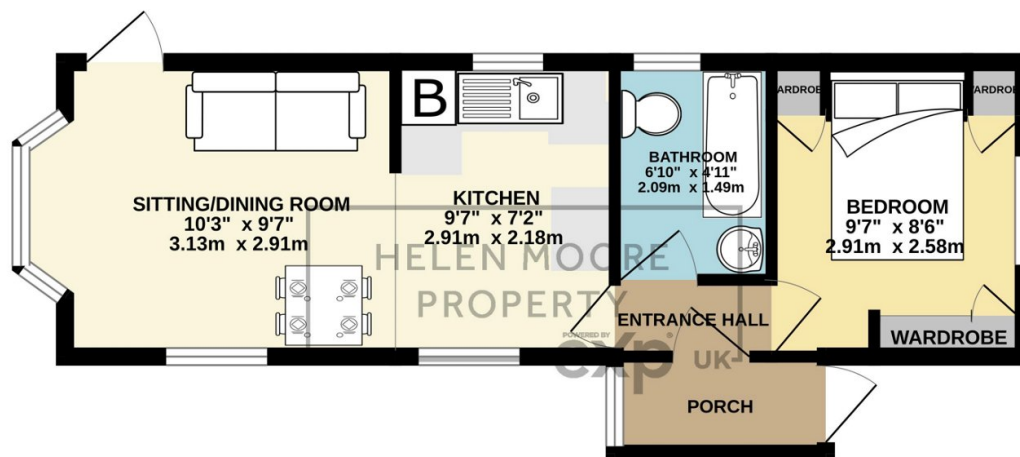
Offers In Region Of £75,000

1 1 1



- Park Home
- Driveway Parking
- Fitted Kitchen
- Double Glazed
- Age Restricted to Over 45
- One Double Bedroom
- Private Garden
- All year Round Occupancy
- Gas Heating
- Cosy Lounge

GROUND FLOOR
328 sq.ft. (30.5 sq.m.) approx.



TOTAL FLOOR AREA : 328 sq.ft. (30.5 sq.m.) approx.

Whilst every attempt has been made to ensure the accuracy of the floorplan contained here, measurements of doors, windows, rooms and any other items are approximate and no responsibility is taken for any error, omission or mis-statement. This plan is for illustrative purposes only and should be used as such by any prospective purchaser. The services, systems and appliances shown have not been tested and no guarantee as to their operability or efficiency can be given.

Made with Metropix ©2024

Nestled within an exclusive estate on the edge of a picturesque town, this one-bedroom park home offers a unique blend of comfort and convenience. The detached home boasts a cosy lounge, a fitted kitchen, a modern bathroom, and a private garden where you can unwind and enjoy the outdoors. The convenience of driveway parking adds an extra layer of ease to your daily routine, ensuring you always have a secure space for your vehicle. Whether you're looking for a peaceful retreat or a permanent home, this charming park home provides a warm and inviting atmosphere for you to make your own. The tranquil surroundings of the estate offer a

sense of serenity, while the proximity to nearby attractions provides ample opportunities for leisure and recreation. Embrace the simplicity of countryside living while still enjoying easy access to all the amenities you need.