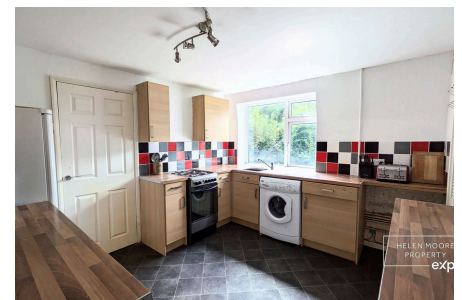


Your Logo

Sheridan Road, Plymouth

Offers Over £100,000

🛏️ 2 🚿 1 🚗 1

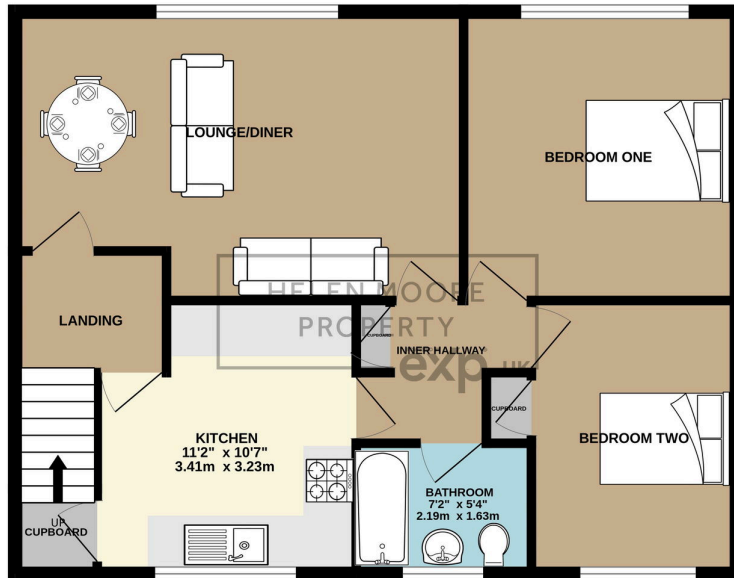


This two double bedroom first flat is situated in the popular residential area of Manadon , which is close to local amenities, bus routes and the local primary school. The property is in need of some modernisation, but would be perfect for a first time buy or a buy to let and is being sold with no onward chain. This spacious two double bedroom first floor flat consists of its own entrance. There is a staircase rising to the first floor. The landing leads to a spacious lounge/ diner, a good size kitchen and a family bathroom which is in need of some modernisation. There is two good size double bedrooms. Outside there is a south facing level rear garden area perfect for sitting enjoying the sunshine and a two good size storage out buildings. There is a side pathway leading to a secure gated door and access to the the front door.

Key Features

- TWO DOUBLE BEDROOM FIRST FLOOR FLAT
- GOOD SIZE KITCHEN
- SOUTH FACING REAR GARDEN
- GAS CENTRAL HEATING
- CLOSE TO LOCAL AMENITIES AND BUS ROUTES
- SPACIOUS LOUNGE/DINER
- OWN ENTRANCE
- DOUBLE GLAZING
- IN NEED OF SOME MODERNISATION
- NO ONWARD CHAIN

FIRST FLOOR
680 sq.ft. (63.2 sq.m.) approx.



TOTAL FLOOR AREA: 680 sq. ft. (63.2 sq. m.) approx.

Whilst every attempt has been made to ensure the accuracy of the floorplan contained here, measurements of doors, windows, rooms and any other items are approximate and no responsibility is taken for any error, omission or mis-statement. This plan is for illustrative purposes only and should be used as such by any prospective purchaser. The services, systems and appliances shown have not been tested and no guarantee as to their operability or efficiency can be given.

Made with Metropix i2024