

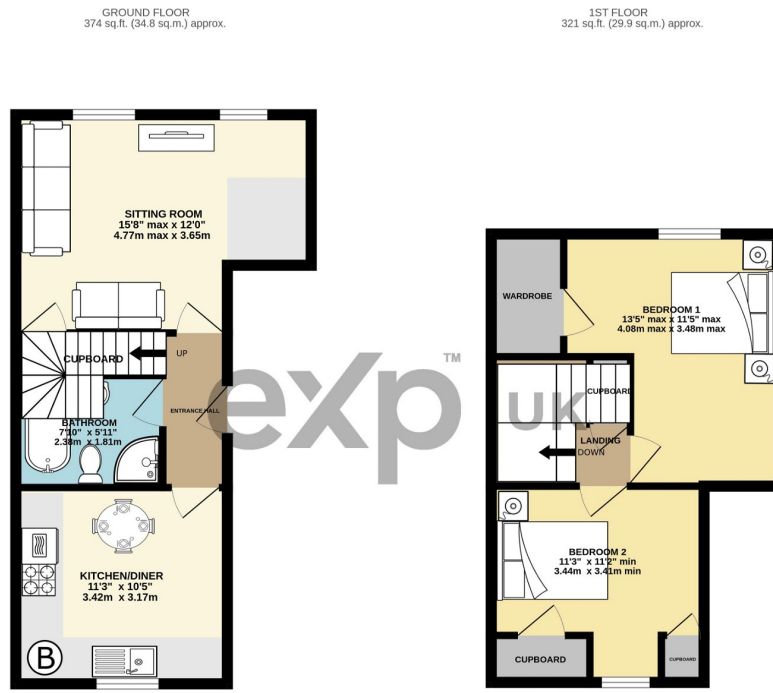
Kimberley Court, Western Road, Ivybridge

Guide Price £145,000

🛏 2 🚿 1 🚻 1



- First Floor Flat
- Fabulous Location in Central Ivybridge
- No Onward Chain
- Lounge
- Bathroom
- Two Double Bedrooms
- Recently Decorated & Carpeted
- Allocated Parking
- Kitchen/Dining Room
- Reference HM0163



TOTAL FLOOR AREA: 696 sq.ft. (64.6 sq.m.) approx.
 Whilst every attempt has been made to ensure the accuracy of the floorplans contained here, measurements of doors, windows, rooms and any other items are approximate and no responsibility is taken for any error, omission or mis-statement. This plan is for illustrative purposes only and should be used as such by any prospective purchaser. The services, systems and appliances shown have not been tested and no guarantee as to their operability or efficiency can be given.
 Made with Metrepro ©2023

This first-floor flat is a rare find overlooking the stunning River Erme in the heart of bustling Ivybridge town centre. With no onward chain, recently decorated and new flooring throughout, this is the perfect opportunity to move in and make it your own. Inside, you'll find two spacious double bedrooms, perfect for accommodating guests or for use as a home office. The fitted kitchen is modern and practical, with ample counter space and plenty of storage for all your cooking essentials and space for your table. The bathroom has a four-piece suite with a separate

shower and footed bath. The charming lounge is the perfect place to entertain guests, with an abundance of natural light making it feel bright and airy. The allocated parking can be found at the rear. Reference HM0163