

Woodfield Crescent, Ivybridge, Devon

Guide Price £415,000

4 2 1



- Detached Family Home
- Family Bathroom & Ensuite
- Generous Driveway & Garage
- Enclosed landscaped Garden
- Spacious Entrance & Cloakroom
- Four Bedrooms
- Stunning Fitted Kitchen with Dining Space
- Double Glazed & Gas C/H
- Lounge with Wood Burner
- Beautifully Presented Throughout

29 Woodfield Crescent, Ivybridge, PL21 0FB

Approximate Gross Internal Floor Area = 112.7 sq m / 1213 sq ft
 Garage Area = 9.5 sq m / 102 sq ft
 Total Area = 122.2 sq m / 1316 sq ft

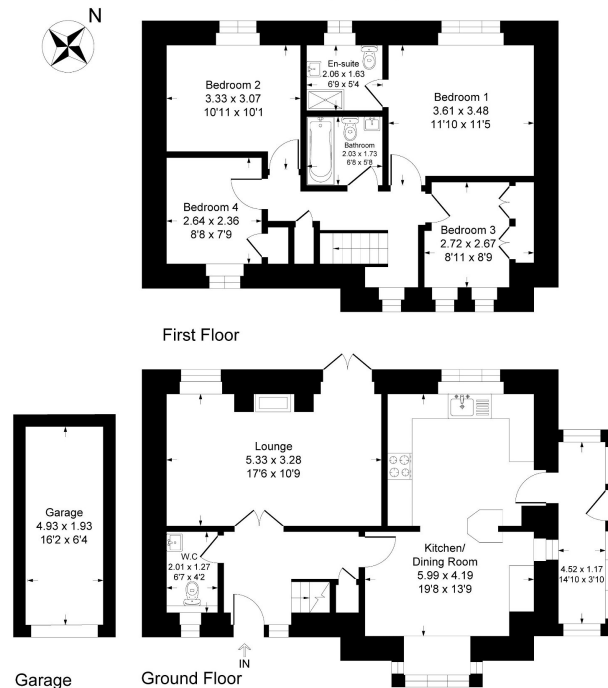


Illustration for identification purposes only, measurements are approximate, not to scale.

Welcome to this stunning property, an ideal haven for families looking for a comfortable and spacious retreat. With four bedrooms and a family bathrooms and ensuite, there is ample room for everyone to have their own space. The lounge features a cosy woodburner, creating a warm and inviting atmosphere, and the double doors open up to the garden, seamlessly melding indoor and outdoor living. The highlight of this home is the modern kitchen/dining room, perfect for family gatherings and entertaining. The stylish design and built in appliances create a

contemporary and functional space for meal preparation. Additionally, the property boasts a cloakroom and a convenient lean-to sunroom. Parking will never be an issue with the driveway accommodating up to three vehicles, and there is also a garage for added convenience.