



GINGER COW
ESTATE AGENTS

01234 860215

Wood Lane, Cotton End

£415,000

4 2

This charming 1930s home has been thoughtfully extended and modernised to create a versatile and spacious family home. With four bedrooms, including a ground-floor bedroom with en-suite, a large kitchen/diner with bi-fold doors, and a stunning rear garden, this property offers the perfect blend of character and modern living. Situated in the peaceful village of Cotton End, with convenient access to local amenities, schools, and transport links, this home is ideal for families looking for space, comfort, and charm. Viewings are highly recommended to fully appreciate everything this home has to offer.

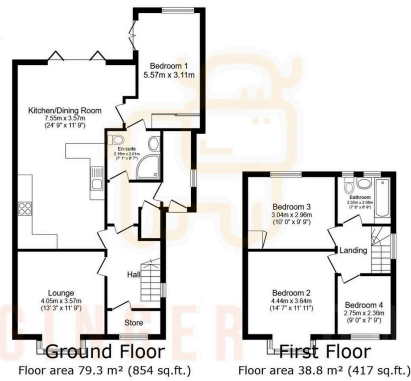


Floor Area: 1272 sq. ft.

Tenure: Freehold

Service Charge: £0 per annum

Ground Rent: £0 per annum



TOTAL: 118.1 m² (1,272 sq.ft.)

This floor plan is for illustrative purposes only. It is not drawn to scale. Any measurements, floor areas (including any total floor area), openings and orientations are approximate. No details are guaranteed. Rely on the report upon the site photos and do not form any part of any agreement. No liability is taken for any error, omission or misstatement. A party must rely upon its own inspections. Powered by www.propertybox.io



GINGER COW
ESTATE AGENTS

01234 860215