



GINGER COW
ESTATE AGENTS

01234 860215

Tawny Avenue, Wixams

£220,000

2 1

Situated in a modern, well-maintained block adjacent to a peaceful park, this spacious two-bedroom first floor apartment offers contemporary living in the heart of the popular Wixams development.

The property features a bright and airy open-plan lounge, dining, and kitchen area, benefiting from a dual aspect and a Juliet balcony that allows plenty of natural light to flood the space. The kitchen area is well-equipped, while a convenient utility cupboard in the hallway keeps laundry appliances neatly tucked away—helping to reduce noise and maintain a calm living environment.

Both bedrooms are generously sized, offering comfortable accommodation for couples, professionals, or small families. The main bathroom is modern and stylishly presented.

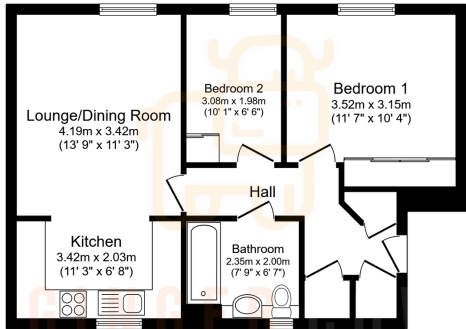


Floor Area: 584 sq. ft.

Tenure: Leasehold

Service Charge: £1600 per annum

Ground Rent: £250 per annum



Total floor area: 54.3 sq.m. (584 sq.ft.)
This floor plan is for illustrative purposes only. It is not drawn to scale. Any measurements, floor areas (including any total floor area), openings and orientations are approximate. No details are guaranteed, they cannot be relied upon for any purpose and do not form any part of any agreement. No liability is taken for any error, omission or misstatement. A party must rely upon its own inspection(s). Powered by www.propertybox.co