



GINGER COW
ESTATE AGENTS

01234 860215

Horseshoe Crescent, Wixams

£325,000

3 3

Beautiful Three-Bedroom Mid-Terrace Home in Wixams Village

This beautifully presented mid-terrace home in desirable Wixams village offers modern, stylish living. The ground floor features an entrance hall, spacious lounge with engineered wood flooring, and a well-equipped kitchen/diner with built-in appliances and double doors opening to a private west-facing garden. A convenient downstairs WC completes the level.

Upstairs, the master bedroom boasts an en-suite, with two additional bedrooms offering versatility for family, guests, or a home office. A modern family bathroom completes the first floor.

The rear garden leads to a carport with an electric car charger and parking for two vehicles. A perfect blend of comfort, style, and convenience in a thriving community.

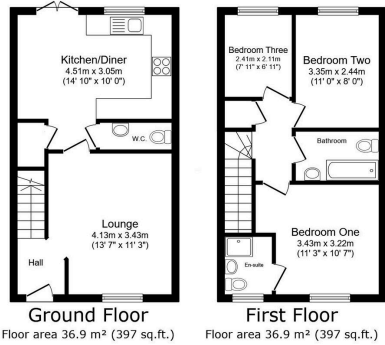


Floor Area: 800 sq. ft.

Tenure: Freehold

Service Charge: £0 per annum

Ground Rent: £0 per annum



TOTAL: 73.8 m² (794 sq.ft.)

This floor plan is for illustrative purposes only. It is not drawn to scale. Any measurements, floor areas (including any total floor area), openings and orientations are approximate. No details are guaranteed, they cannot be relied upon for any purpose and do not form part of any agreement. No liability is taken for any errors, omissions or misstatements. A party must rely upon its own inspection(s). Powered by www.propertybox.co.uk