



GINGER COW
ESTATE AGENTS

01234 860215

Merlin Meadows, Wixams

£410,000

4 4

This extraordinary townhouse encapsulates modern living at its finest. Boasting an expansive kitchen/diner, serene lounge with a Juliet balcony, and four beautifully appointed bedrooms – including two with en-suites – this property offers a lifestyle of comfort and sophistication. With its landscaped garden, garage, and allocated parking, every detail has been considered.

Positioned in the sought-after community of Wixams, with great schools, local amenities, and transport links, this home provides the perfect balance of tranquility and convenience. Book your viewing today to experience this exceptional property and the lifestyle it promises.

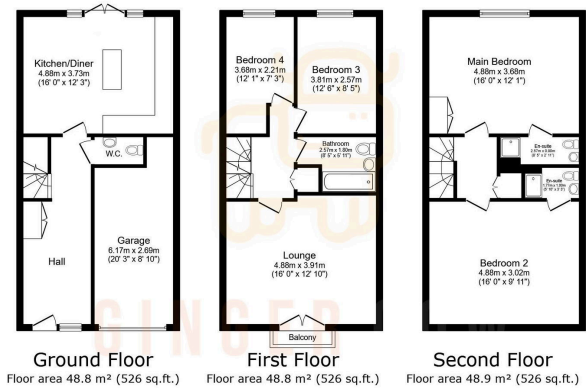


Floor Area: 1577 sq. ft.

Tenure: Freehold

Service Charge: £0 per annum

Ground Rent: £0 per annum



TOTAL: 146.5 m² (1,577 sq.ft.)

This floor plan is for illustrative purposes only. It is not drawn to scale. Any measurements, floor areas (including any total floor area), openings and orientations are approximate. No details are guaranteed. Please contact the agent for any purpose and do not form any part of any agreement. No liability is taken for any error, omission or misstatement. A party must rely upon its own inspection(s). Powered by www.propertybox.io

