



GINGER COW
ESTATE AGENTS

01234 860215

Thorne Close, Wixams

£400,000

3 3

GUIDE PRICE £400,000 - £410,000

This elegant three-bedroom detached home is beautifully positioned on a quiet corner plot in the highly sought-after Willow Grove area of Wixams. Surrounded by open fields and countryside, yet conveniently close to local shops and schools, this property offers the perfect blend of tranquility and accessibility.

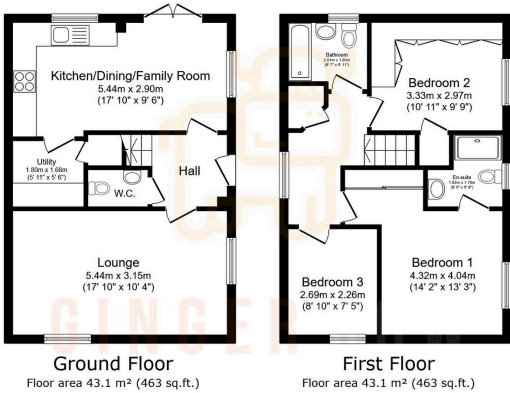


Floor Area: sq. ft.

Tenure: Freehold

Service Charge: £0 per annum

Ground Rent: £0 per annum



TOTAL: 86.1 m² (927 sq.ft.)

This floor plan is for illustrative purposes only. It is not drawn to scale. Any measurements, floor areas (including any total floor area), openings and orientations are approximate. No details are guaranteed. They cannot be relied upon for any purpose and do not form any part of any agreement. No liability is taken for any error, omission or misstatement. A party must rely upon its own inspection(s). Powered by www.propertybox.io

