



GINGER COW
ESTATE AGENTS

01234 860215

Swift Way, Wixams

£475,000

4 3

This gorgeous 4-bedroom detached family home in Wixams is the epitome of comfortable and stylish living. With its spacious and flexible interiors, beautifully landscaped garden, and thoughtful features such as air conditioning and a wide garage, this property is perfect for those seeking a high-quality family home in a tranquil setting. Don't miss the opportunity to make this exceptional property your own and enjoy all that this lovely village has to offer.

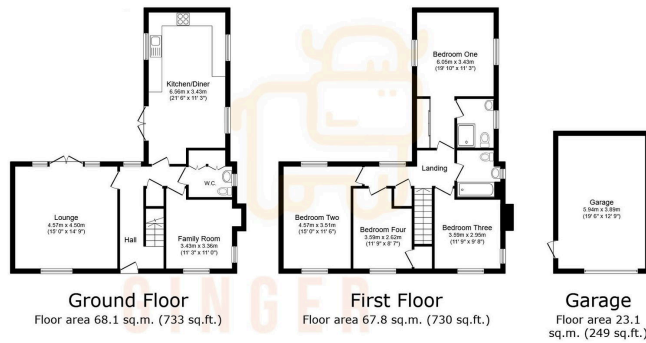


Floor Area: sq. ft.

Tenure: Freehold

Service Charge: £700 per annum

Ground Rent: £ per annum



TOTAL: 159.0 sq.m. (1,712 sq.ft.)

This floor plan is for illustrative purposes only. It is not drawn to scale. Any measurements, floor areas (including any total floor area), coverings and orientations are approximate. No details are guaranteed. Please contact the agent for any purpose and do not form any part of any agreement. No liability is taken for any error, omission or misstatement. A party must rely upon its own inspection(s). Powered by www.propertybox.co.uk

