



GINGER COW
ESTATE AGENTS

01234 860215

20 Wheatfield Road,

£375,000

3 3

Welcome to this exquisite 3-bedroom detached family home, perfectly situated in the desirable Wixams area. Nestled in a quiet cul-de-sac, this residence offers an ideal blend of tranquility and convenience, making it the perfect choice for families seeking a comfortable and stylish living space. From its spacious interiors to the beautifully landscaped gardens, every detail of this home has been thoughtfully designed to enhance modern family living.

If you are seeking a stylish and comfortable family home in a peaceful and well-connected location, this property is the perfect choice. Embrace the opportunity to make this delightful house your forever home and enjoy the exceptional lifestyle it offers.

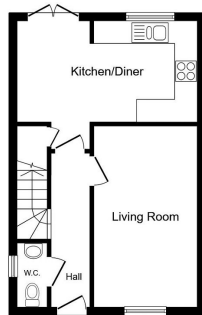


Floor Area: sq. ft.

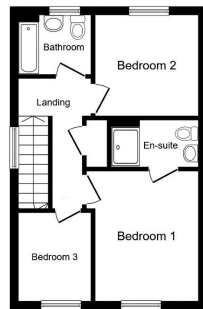
Tenure: Not given

Service Charge: £ per annum

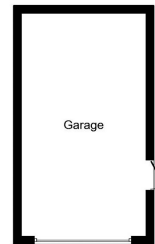
Ground Rent: £ per annum



Ground Floor



First Floor



Garage



This floor plan is for illustrative purposes only. It is not drawn to scale. Any measurements, floor areas (including any total floor area), openings and orientations are approximate. No details are guaranteed. Buyer advised to refer upon for any purpose and to not form any part of any agreement. No liability is taken for any error, omission or misstatement. A party must rely upon its own inspection(s). Powered by www.Hipmortgage.co.uk

