



## 24 Bridge Road, Leeds, LS5 3BY

Available 1st July 2026 - A mezzanine one bedroom apartment located in Kirstall.

This property, located on the third floor of a converted Grade II listed historic mill, has been designed to a stylish and contemporary standard. The apartment contains a kitchen living room with fully fitted appliances and storage cupboard. A modern bathroom is located off the living room. Upstairs, the bedroom is big enough for a large bed and ample furnishings.

Rivermill Court is located in a picturesque setting next to the river with Kirkstall Bridge Shopping Park located next door. Local buses depart from nearby Kirkstall Road.

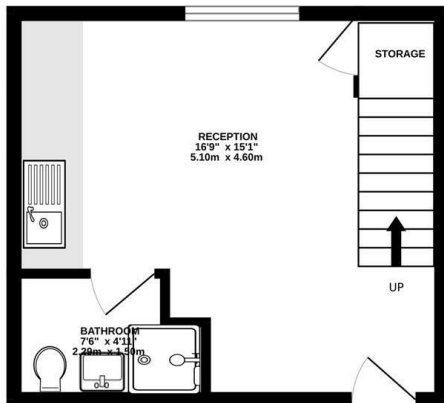
Please note - there is a restriction on the title which mandates this property must be occupied by a student.

- Chain Free
- Student Property
- Kirkstall
- Secure Entry

**£775 Per month**

[www.fletcherprops.com](http://www.fletcherprops.com)

GROUND FLOOR  
252 sq.ft. (23.5 sq.m.) approx.



1ST FLOOR  
155 sq.ft. (14.4 sq.m.) approx.



TOTAL FLOOR AREA : 407 sq.ft. (37.8 sq.m.) approx.

Whilst every attempt has been made to ensure the accuracy of the floorplan contained here, measurements of doors, windows, rooms and any other items are approximate and no responsibility is taken for any error, omission or mis-statement. This plan is for illustrative purposes only and should be used as such by any prospective purchaser. The services, systems and appliances shown have not been tested and no guarantee as to their operability or efficiency can be given.  
Made with Metropix ©2024

Energy Efficiency Rating		Current	Potential
Very energy efficient - lower running costs			
(92 plus) A			
(81-91) B			
(69-80) C			
(55-68) D		69	69
(39-54) E			
(21-38) F			
(1-20) G			
Not energy efficient - higher running costs			
England & Wales		EU Directive 2002/91/EC	

Environmental Impact (CO <sub>2</sub> ) Rating		Current	Potential
Very environmentally friendly - lower CO <sub>2</sub> emissions			
(92 plus) A			
(81-91) B			
(69-80) C			
(55-68) D			
(39-54) E			
(21-38) F			
(1-20) G			
Not environmentally friendly - higher CO <sub>2</sub> emissions			
England & Wales		EU Directive 2002/91/EC	