



41 The Crescent, Adel, Leeds, LS16 6AG

Available Now - Unfurnished with white goods included

A wonderfully presented four bedroom, two bathroom house in Adel.

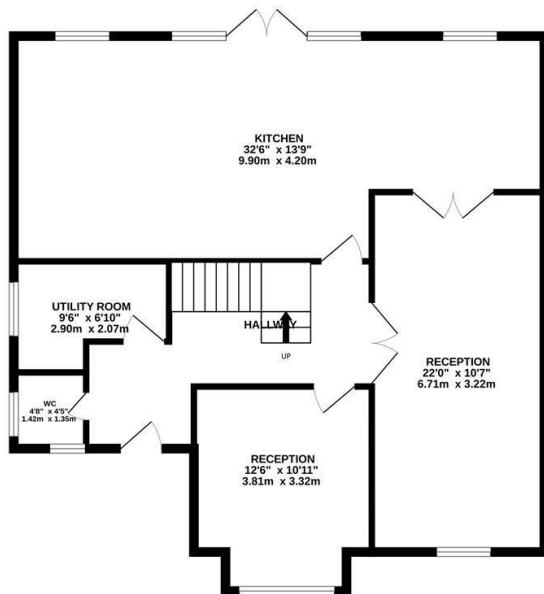
Beautifully refurbished to a very high standard, this family home comprises two large reception rooms to the front, with a bright and open kitchen diner spanning the full width of the house at the rear. There are also a utility room/laundry and WC located off the entrance hallway.

Upstairs there is a huge master bedroom which includes an ensuite shower room. Three more bedrooms and a large family bathroom, which contains a bath and shower, are all accessed from the first floor landing.

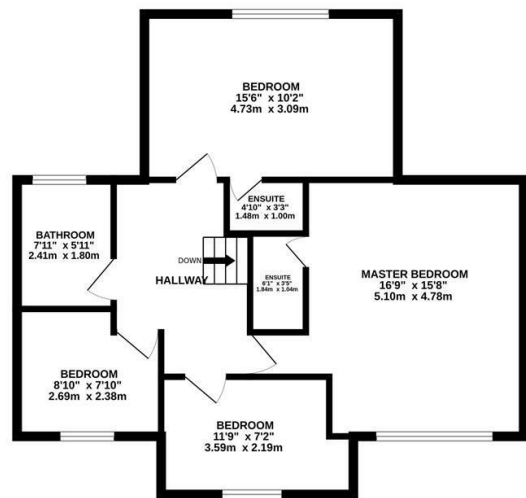
£2,500 Per month

www.fletcherprops.com

GROUND FLOOR
973 sq.ft. (90.4 sq.m.) approx.



1ST FLOOR
686 sq.ft. (63.7 sq.m.) approx.



TOTAL FLOOR AREA: 1658 sq.ft. (154.1 sq.m.) approx.

Whilst every attempt has been made to ensure the accuracy of the floorplan contained here, measurements of doors, windows, rooms and any other items are approximate and no responsibility is taken for any error, omission or mis-statement. This plan is for illustrative purposes only and should be used as such by any prospective purchaser. The services, systems and appliances shown have not been tested and no guarantee as to their operability or efficiency can be given.

Made with Metropix ©2023

