



49, La Salle Chadwick Street, Leeds, LS10 1NG

Available 26th May 2025

A very large two bedroom, two bathroom apartment in the La Salle development in Leeds Dock.

Fully furnished to a high spec, the apartment benefits from fourth-floor dock views from a Juliette balcony. The modern, open plan kitchen living room contains ample storage, with integrated appliances and a dining area. Both bedrooms are large doubles, with one accessing an en-suite shower room. The house bathroom contains a bath and shower over. Two lifts access the property and on-street parking is available outside, or for a monthly fee at the nearby multi-storey.

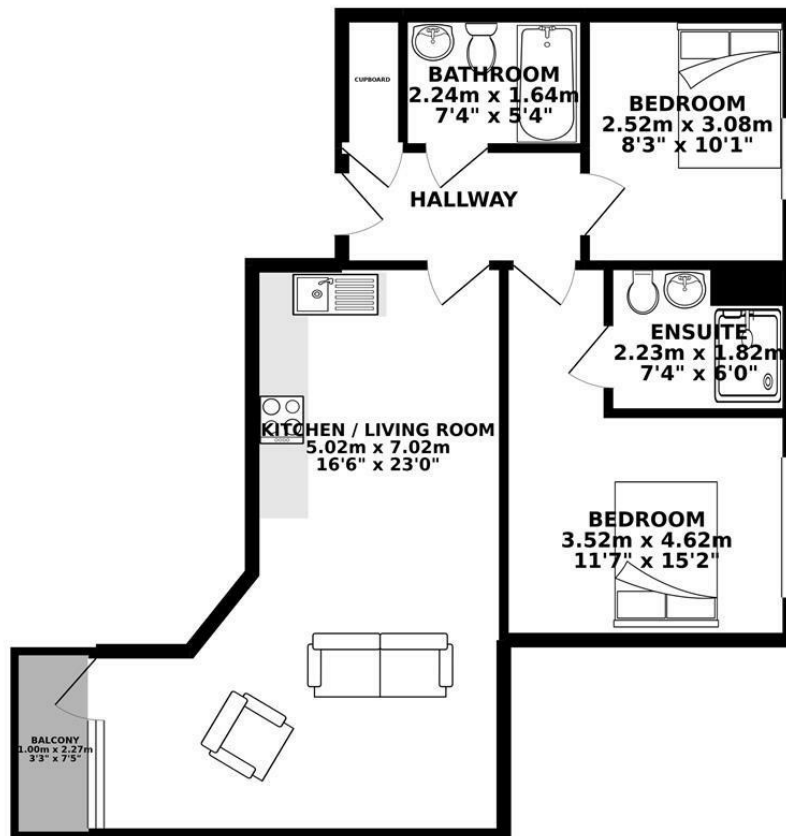
La Salle is located less than 0.5 miles from all city centre amenities. Tesco Direct is 100 yards away and local bus routes call at Chadwick Street on the doorstep.

- Two Bedroom
- Two Bathroom
- Fourth Floor
- Elevator Access
- Balcony
- Fully Furnished

£1,200 Per month

www.fletcherprops.com

GROUND FLOOR 59.71 sq. m.
(642.66 sq. ft.)



TOTAL FLOOR AREA: 59.71 sq. m. (642.66 sq. ft.) approx.

Whilst every attempt has been made to ensure the accuracy of the floorplan contained here, measurements of doors, windows, rooms, and any other items are approximate and no responsibility is taken for any error, omission or mis-statement. This plan is for illustrative purposes only and should be used as such by any prospective purchaser. The services, systems and appliances shown have not been tested and no guarantee as to their operability or efficiency can be given.
Made with Metropix ©2019

Energy Efficiency Rating		Current	Potential
Very energy efficient - lower running costs			
(92 plus) A			85
(81-91) B			
(69-80) C			
(55-68) D			
(39-54) E			
(21-38) F			
(1-20) G			
Not energy efficient - higher running costs			
		72	
England & Wales		EU Directive 2002/91/EC	

Environmental Impact (CO ₂) Rating		Current	Potential
Very environmentally friendly - lower CO ₂ emissions			
(92 plus) A			
(81-91) B			
(69-80) C			
(55-68) D			
(39-54) E			
(21-38) F			
(1-20) G			
Not environmentally friendly - higher CO ₂ emissions			
		75	75
England & Wales		EU Directive 2002/91/EC	