



11 Wilton Grove, Leeds, Yorkshire, LS6 4ES

A traditional, charming and attractive three bedroom house in Meanwood.

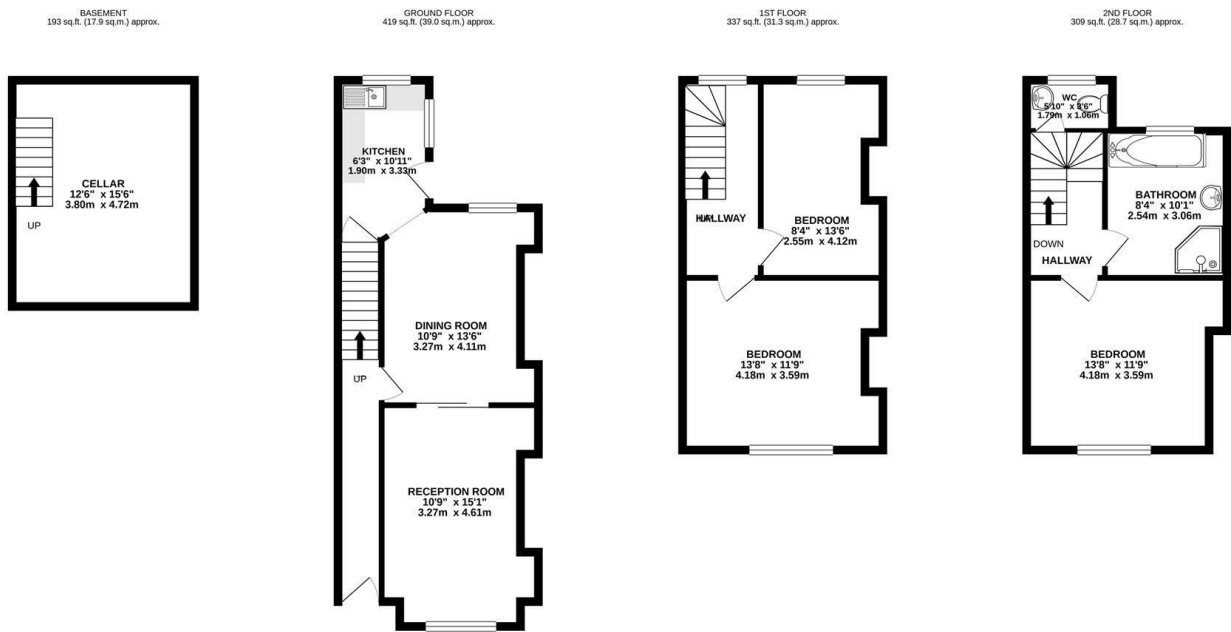
Perfect for families, this character home is set out over four floors. The ground floor has front and rear access, with high ceilings throughout the newly renovated kitchen, living room and separate dining room. Substantial basement storage is accessed off the kitchen. The hallway staircase leads to the master bedroom and recently installed house bathroom. The upper floor includes a second WC and two more double bedrooms. A private patio terrace is located to the rear.

Wilton Grove is a quiet cul-de-sac located inbetween Headingley and Meanwood. Waitrose and Aldi are less than 0.5 miles away, with regular city centre buses departing from nearby Meanwood Road or Otley Road. On-street parking is available to the front of the house.

- Chain Free
- Quiet Cul De Sac
- Recently Installed Bathroom
- Traditional Features
- Basement Storage
- Private Rear Patio

£270,000

www.fletcherprops.com



TOTAL FLOOR AREA : 1259 sq.ft. (116.9 sq.m.) approx.

Whilst every attempt has been made to ensure the accuracy of the floorplan contained here, measurements of doors, windows, rooms and any other items are approximate and no responsibility is taken for any error, omission or mis-statement. This plan is for illustrative purposes only and should be used as such by any prospective purchaser. The services, systems and appliances shown have not been tested and no guarantee as to their operability or efficiency can be given.
Made with Metropix. ©2021

