



## 45 Highbury Road, Leeds, Yorkshire, LS6 4EX

AVAILABLE 5th September 2024

A fully furnished, mid terrace house located in popular Meanwood, containing two double bedrooms, one single bedroom and a house bathroom.

Recently renovated, the property contains an open plan living room/kitchen area with a feature open-brick fireplace, two double bedrooms, a smaller bedroom/study and a modern house bathroom including a bath with a shower.

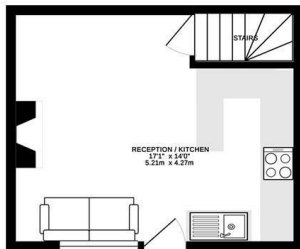
Highbury Road is located in a quiet residential pocket of north Leeds, less than half a mile from Waitrose and Aldi and with regular buses towards the city centre leaving from nearby Meanwood Road.

- House to Rent
- Great Area
- New Carpets
- Fully Furnished
- Close to Transport
- On Street Parking

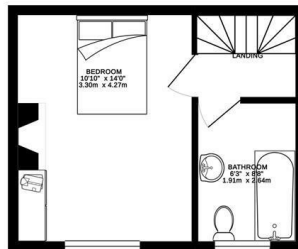
**£1,150 Per month**

[www.fletcherprops.co.uk](http://www.fletcherprops.co.uk)

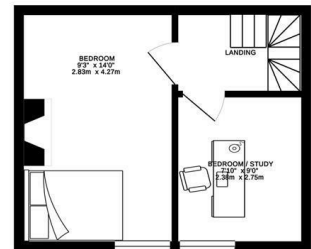
GROUND FLOOR 240 sq. ft.  
( 22.3 sq. m. )



1ST FLOOR 240 sq. ft.  
( 22.3 sq. m. )



2ND FLOOR 240 sq. ft.  
( 22.3 sq. m. )



TOTAL FLOOR AREA: 719 sq. ft. ( 66.8 sq. m. ) approx.

Whilst every attempt has been made to ensure the accuracy of the floorplan contained here, measurements of doors, windows, rooms and any other items are approximate and no responsibility is taken for any error, omission or mis-statement. This plan is for illustrative purposes only and should be used as such by any prospective purchaser. The services, systems and appliances shown have not been tested and no guarantee as to their operability or efficiency can be given.  
Made with Metropix ©2019

Energy Efficiency Rating		Current	Potential
Very energy efficient - lower running costs			
(92 plus) A			
(81-91) B			
(69-80) C			
(55-68) D		63	66
(39-54) E			
(21-38) F			
(1-20) G			
Not energy efficient - higher running costs			
England & Wales		EU Directive 2002/91/EC	

Environmental Impact (CO <sub>2</sub> ) Rating		Current	Potential
Very environmentally friendly - lower CO <sub>2</sub> emissions			
(92 plus) A			
(81-91) B			
(69-80) C			
(55-68) D			
(39-54) E			
(21-38) F			
(1-20) G			
Not environmentally friendly - higher CO <sub>2</sub> emissions			
England & Wales		EU Directive 2002/91/EC	