



SHEPHERD
COMMERCIAL

Woodside Ind Est, Fordbridge, Kingshurst, B37 6LY

Secure small industrial units with parking

Summary

Tenure	To Let
Available Size	412 sq ft / 38.28 sq m
Rent	£375.00 per annum
Business Rates	Upon Enquiry
EPC Rating	Upon enquiry

Key Points

- £4,500 per annum
- Fluorescent lighting
- 3 Units available
- Excellent location
- Secure gated industrial estate
- Popular location
- Allocated car parking
- W.C's in each unit

Woodside Ind Est, Fordbridge, Kingshurst, B37 6LY

DESCRIPTION

The estate forms two terraces of single-storey brick-built industrial units with access from a shared car park set within a secure gated entrance. Surmounting each unit is mono-pitched roofing with each unit benefitting from W.C's, fluorescent strip lighting and UPVC double glazed windows. Access is via concertina loading doors with concrete loading aprons fronting each unit. The units benefit from allocated car parking.

LOCATION

Woodside Industrial Estate is set within a small secure estate surrounded by a residential suburb off Dunton Road in Kingshurst. Close to A452 Chester Road and 2 miles from Birmingham NEC and Birmingham Airport, the property provides excellent access to major road networks and benefits from proximity to the city centre.

TENURE

The property is to be marketed to the leasehold open market for the sum of £4,500 per annum equivalent to £375 per calendar month. The rental figure is inclusive of service charge but does not include buildings insurance which will be paid by the landlords and re-charged to the tenant. It is also the tenants responsibility for contents insurance.

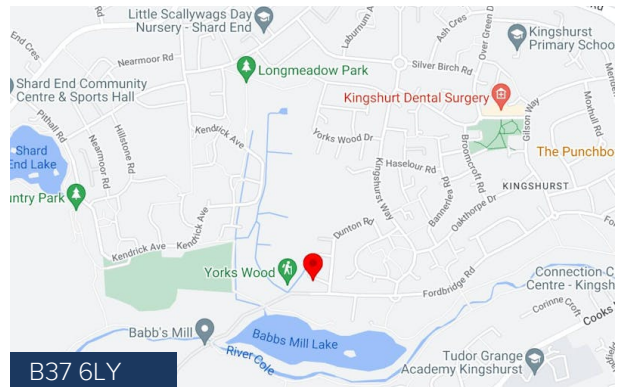
MORE INFO

EPC – Available on request

Services – We understand all mains services are connected to the property.

Viewing - Strictly by appointment with the sole agents Shepherd Commercial Ltd

Tel: 01564 778890 / Email: info@shepcom.com



Viewing & Further Information

KAINE ARKINSON

01564 778 890 | 07487 521 802

kaine@shepcom.com

The above information contained within this email is sent subject to contract. These particulars are for general information only and do not constitute any part of an offer or contract. All statements contained therein are made without responsibility on the part of the vendors or lessors and are not to be relied upon as statement or representation of fact. Intending purchasers or lessees must satisfy themselves, by inspection, or otherwise, as to the correctness of each of the statements of dimensions contained in these particulars. Generated on 11/04/2024



SHEPHERD
COMMERCIAL



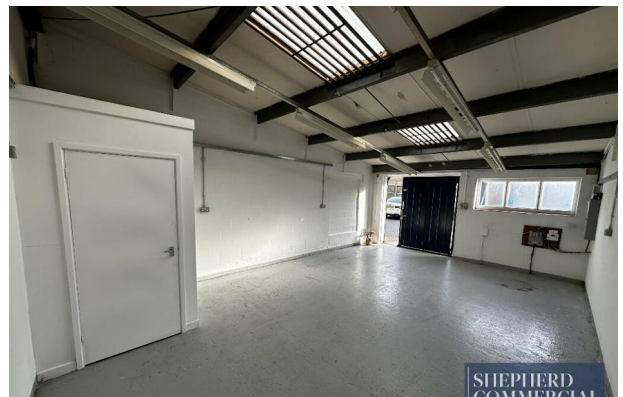
SHEPHERD
COMMERCIAL



SHEPHERD
COMMERCIAL



SHEPHERD
COMMERCIAL



SHEPHERD
COMMERCIAL