

**BANKSIDE
GARDENS**

GREEN PARK VILLAGE | READING

B



Bespoke
E S T A T E A G E N T S

No. 2 Bankside Gardens, Reading
£315,000



213 No. 2 Bankside Gardens

Reading

Luxurious 1-bed apartment in Bankside Gardens with private balcony & serene garden/lake views. Modern kitchen, elegant bedroom, luxury bathroom, video entry, amenities inc. gym & concierge. Close to Reading & London. Modern city living at its finest. Council Tax band: TBD

Tenure: Leasehold

- First floor apartment on the prestigious Bankside Gardens development
- Private balcony with stunning views over landscaped gardens and the lake
- Bright, spacious living room with open-plan designer kitchen
- Contemporary kitchen with integrated dishwasher, fridge, freezer, oven and hob
- Elegant double bedroom with built-in wardrobes and calming garden views
- Luxurious bathroom featuring full-size bath, rainfall shower and quality finishes
- Secure video entry system with app-based access for convenience and peace of mind
- One allocated parking space, visitor spaces and on-site EV charging
- Stylish residents' lounge and co-working studio for remote working
- Exclusive access to a fully equipped private gym and concierge service

Communal Entrance

Accessed securely via a video intercom system with an accompanying mobile app for added convenience, the communal entrance offers a warm and impressive welcome. The stylish reception area features comfortable seating, providing an ideal space for meeting guests. Residents benefit from both lift and stair access to all floors, ensuring ease of movement throughout the building.

Entrance Hall

Welcoming and well laid out, the entrance hall offers an immediate sense of space and order. It provides access to the bathroom, bedroom, living area, and utility cupboard, creating a practical flow throughout the home. Finished with neutral tones and designed with functionality in mind, it's the ideal starting point for this thoughtfully arranged apartment.

Living Room

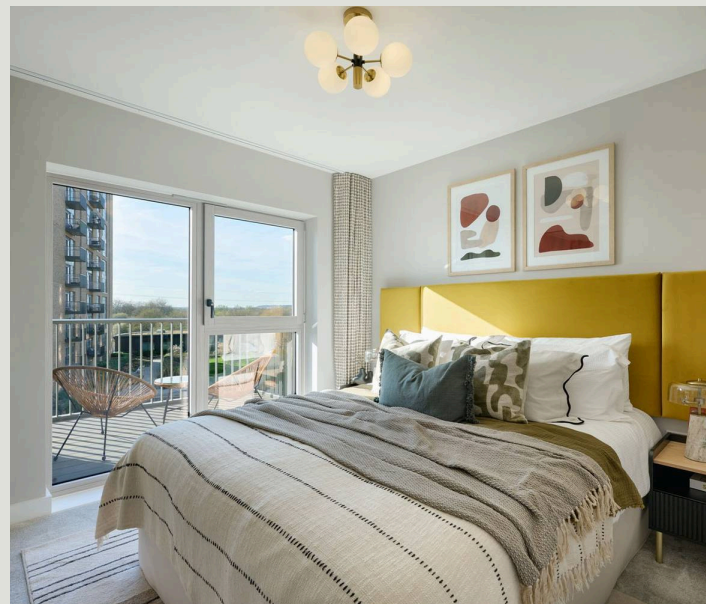
13' 2" x 12' 8" (4.02m x 3.86m)

Designed for modern living, the spacious living room is flooded with natural light from a large picture window, offering relaxing views over the landscaped communal gardens and beyond. A door leads out to a private balcony – perfect for morning coffee or unwinding after work. Open plan to the contemporary kitchen, this sociable space is ideal for hosting friends or simply enjoying stylish, easy living.

Kitchen

8' 7" x 7' 11" (2.62m x 2.42m)

Seamlessly blending into the open plan layout, the contemporary kitchen is both stylish and practical. Featuring integrated appliances including a dishwasher, fridge, freezer, built-in oven and hob, it's perfectly designed for easy everyday living and effortless entertaining. Clean lines and quality finishes make it a space you'll be proud to show off.





Bedroom

11' 4" x 10' 0" (3.45m x 3.05m)

Bright and inviting, the bedroom offers lovely views over the communal gardens, creating a calm and restful atmosphere. Built-in wardrobes provide excellent storage while keeping the space feeling clean and uncluttered – ideal for busy lifestyles and a perfect retreat at the end of the day.

Bathroom

Sleek and beautifully finished, the bathroom offers a perfect blend of style and practicality. Featuring a full-sized bath with overhead rainfall shower and glass screen, a contemporary wall-mounted basin with storage, and a chrome heated towel rail, it's designed for relaxed, modern living. Thoughtful details and elegant finishes create a spa-like feel – the ideal place to unwind at the end of a busy day.

