



Java Lodge, Burma Road, Duxford, CB22 4QP



**ARKWRIGHT & CO**  
RESIDENTIAL & COMMERCIAL AGENTS



# Java Lodge, Burma Road

Duxford | CB22 4QP

Guide Price £475,000

- Modern detached bungalow
- Two double bedrooms
- Open plan living space
- Decorated to a high standard
- Generous enclosed rear garden
- Separate studio
- Non estate location
- Under 10 minute drive to Trumpington P&R
- Excellent road links to the M11
- EPC C

## The Property

An exceptional, contemporary, detached bungalow nestled in a tranquil setting within Duxford. Situated away from busy thoroughfares, this property boasts modern comforts alongside convenient access to the M11 motorway. Boasting an expansive garden offering ample privacy, this home features vaulted ceilings, an open-plan layout, two double bedrooms, two bathrooms, a versatile outbuilding, and convenient driveway parking.

## The Setting

Situated in Duxford, this property offers more than just a comfortable home. The village's rich historical significance and aviation heritage, highlighted by the nearby Imperial War Museum, add to its allure. Duxford's charming setting, with its picturesque churches, local pubs, and vibrant community activities, makes it an ideal location for residents seeking a blend of history, nature, and modern conveniences.



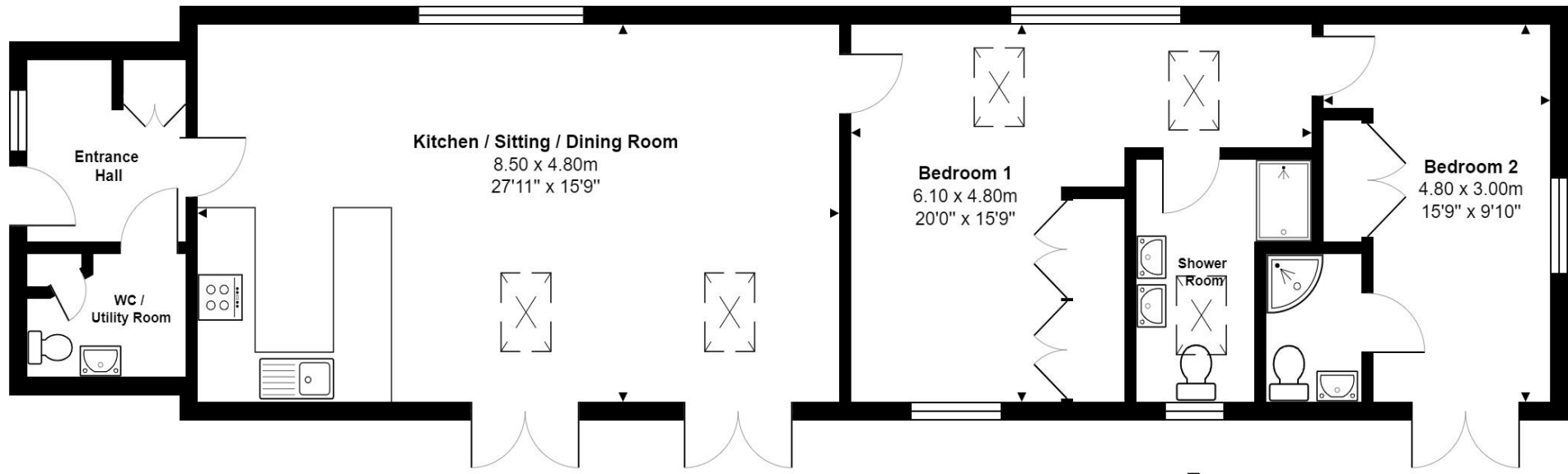








## Ground Floor



Total Area: 91.7 m<sup>2</sup> ... 987 ft<sup>2</sup>

All measurements are approximate and for display purposes only



Agents Notes: All measurements are approximate and quoted in metric with imperial equivalents and for general guidance only and whilst every attempt has been made to ensure accuracy, they must not be relied on. The fixtures, fittings and appliances referred to have not been tested and therefore no guarantee can be given that they are in working order. Internal photographs are reproduced for general information and it must not be inferred that any item shown is included with the property. For a free valuation, contact the numbers listed on the brochure.



**ARKWRIGHT & CO**  
RESIDENTIAL & COMMERCIAL AGENTS





01223 320114

[guy.joseph@arkwrightandco.co.uk](mailto:guy.joseph@arkwrightandco.co.uk)  
[www.arkwrightandco.co.uk](http://www.arkwrightandco.co.uk)



**ARKWRIGHT & CO**  
RESIDENTIAL & COMMERCIAL AGENTS