



Elizabeth Road, Shoreham-by-sea, BN43 6YJ

Offers Over £300,000

2 1 2

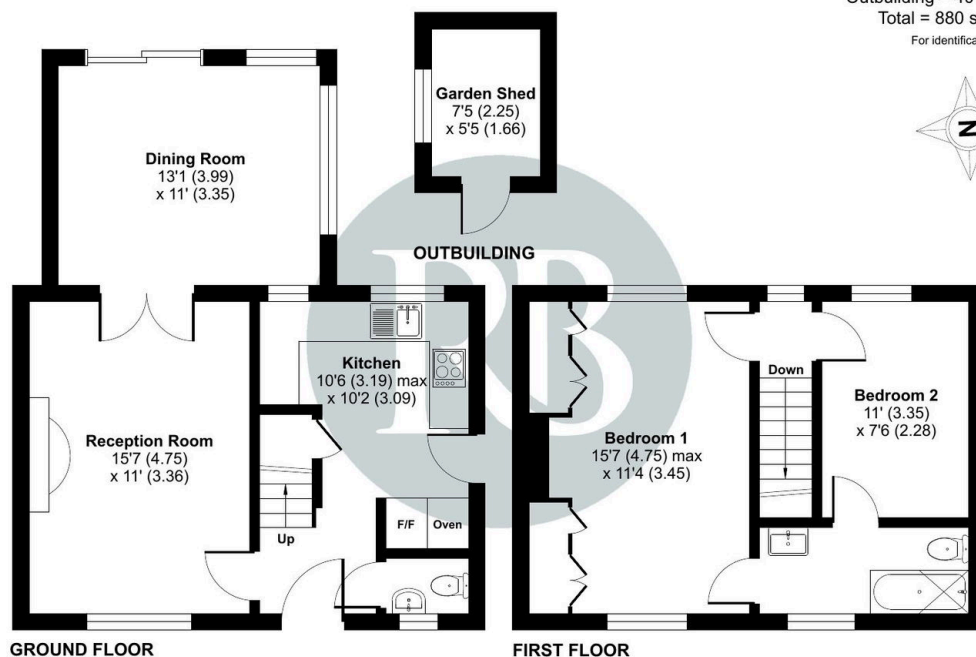




- Semi Detached House
- 2 Double bedrooms
- Separate kitchen / breakfast room
- Conservatory extension
- Potential to extend or re-configure
- No Onward Chain
- 65ft West facing rear garden
- Lounge opening to a dining area
- Bathroom and 2nd GF toilet
- 1/2 mile to Holmbush Shopping Centre

Elizabeth Road, Shoreham-by-Sea, BN43

Approximate Area = 840 sq ft / 78 sq m
Outbuilding = 40 sq ft / 3.7 sq m
Total = 880 sq ft / 81.7 sq m
For identification only - Not to scale



 Floor plan produced in accordance with RICS Property Measurement 2nd Edition, Incorporating International Property Measurement Standards (IPMS2 Residential). © n3cheom 2025. Produced for Royall Best Ltd. REF: 1261711

An ideal starter home with a West facing garden, whilst in liveable condition the property can benefit from updating to create a home. Private driveway for two cars