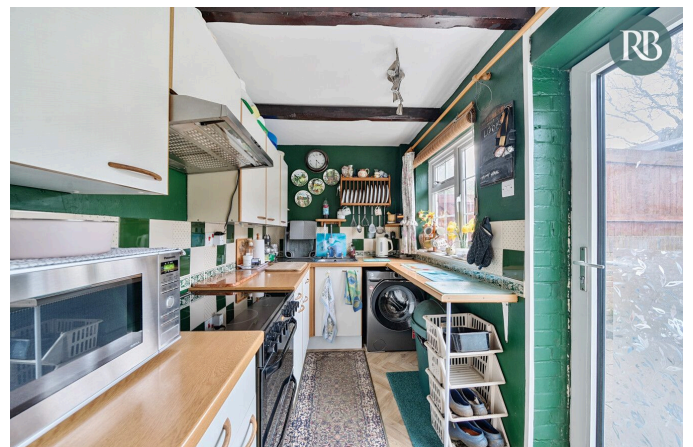




## Cromleigh Way, Southwick, West Sussex, BN42 4WG

£400,000

3 1 1





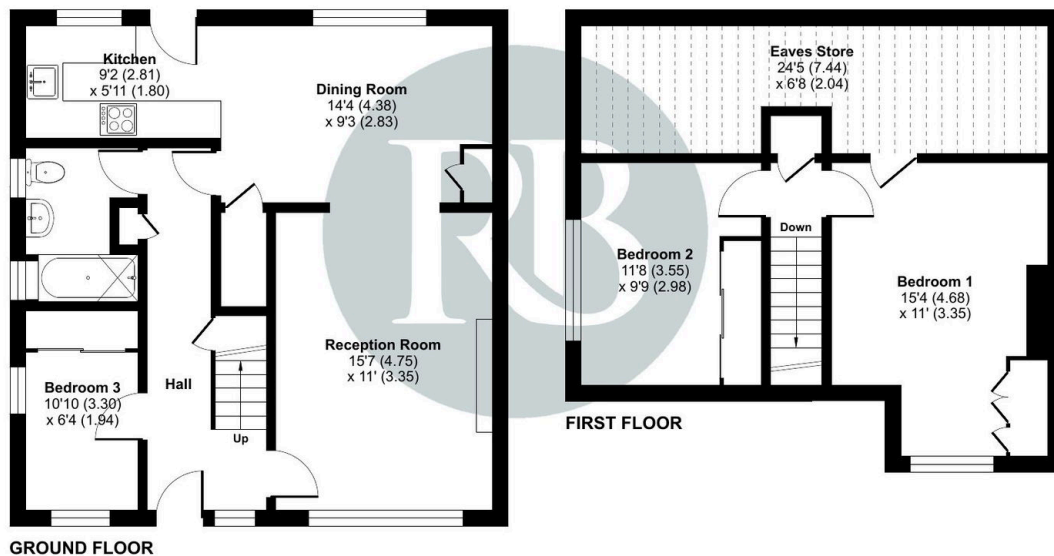
- Chalet Style Bungalow
- Potential to extend STNC
- Flowing Living space
- Kitchen / Diner
- Parking bay
- Large Eaves Storage
- 3 Bedrooms
- Southerly lounge
- Secluded Garden
- Close to South Downs



Denotes restricted  
head height

### Cromleigh Way, Southwick, Brighton, BN42

Approximate Area = 938 sq ft / 87.1 sq m  
Limited Use Area(s) = 168 sq ft / 15.6 sq m  
Total = 1106 sq ft / 102.7 sq m  
For identification only - Not to scale



Floor plan produced in accordance with RICS Property Measurement 2nd Edition, Incorporating International Property Measurement Standards (IPMS2 Residential). © nrichcom 2025. Produced for Royall Best Ltd. REF: 1244810

Chalet style house with 3 bedrooms, a large eaves storage with good scope to extend STNC. Flowing reception space and a ground floor bathroom. Well kept gardens and parking bay