



Prince Charles Close, Southwick, West Sussex, BN42 4PQ

£350,000

3 beds 1 bath 1 garage

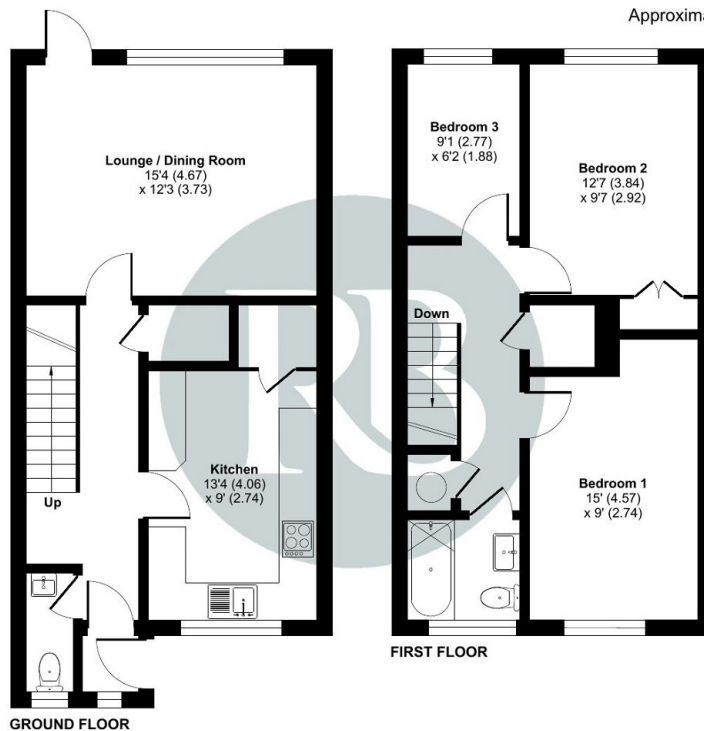




- 3 Bedrooms
- South facing garden
- Good sized Kitchen/breakfast room
- Quiet Close setting
- Within 1 mile of a variety of shops
- Mid-Terrace house
- Ground floor WC
- Southerly lounge / diner
- Ample on street parking
- Walking distance to Southwick and Portslade Stations

Prince Charles Close, Southwick, Brighton, BN42

Approximate Area = 943 sq ft / 87.6 sq m
For identification only - Not to scale



Floor plan produced in accordance with RICS Property Measurement Standards incorporating International Property Measurement Standards (IPMS2 Residential). © nrichcom 2024. Produced for Royall Best Ltd. REF: 1120796

A well presented three bedroom terraced house with a South facing garden, situated in a quiet close and conveniently bordering Portslade

Russ @ Royall Best says there is great light from the south facing lounge and garden

Lucie @ Royall Best likes the views from the bedroom as well as the easy access by both car and foot to Southwick, Portslade and surrounding areas

