



# Holmbush Way, Southwick, Brighton, BN42 4YE

£425,000

3 beds 1 bath 2 cars

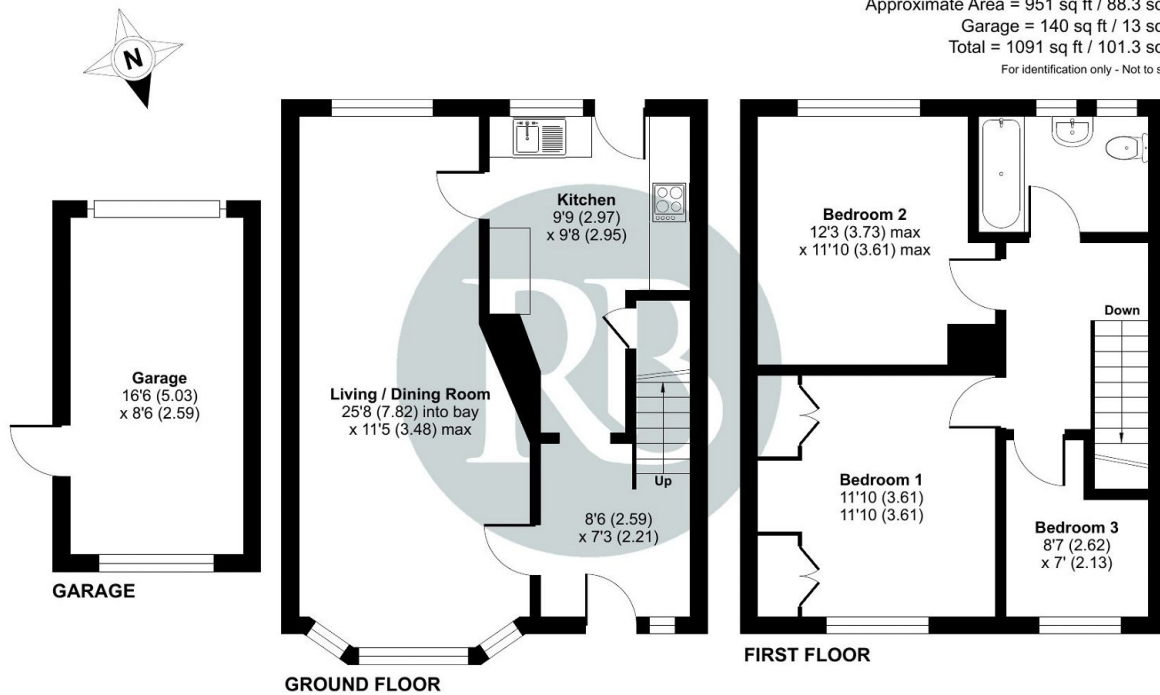




- Three Bedroom Semi-Detached House
- South facing garden
- Through lounge / dining room
- Paved driveway
- Garage
- Open outlook towards the sea
- Popular Southwick area
- No Onward Chain

### Holmbush Way, Southwick, Brighton, BN42

Approximate Area = 951 sq ft / 88.3 sq m  
Garage = 140 sq ft / 13 sq m  
Total = 1091 sq ft / 101.3 sq m  
For identification only - Not to scale



Floor plan produced in accordance with RICS Property Measurement Standards incorporating International Property Measurement Standards (IPMS2 Residential). © nrichcom 2024. Produced for Royall Best Ltd. REF: 1081404

A three bedroom semi-detached house with a South facing rear garden and far reaching views towards the sea. Paved driveway and a garage, No onward chain.