

# SIGNATURE

## NORTH EAST

OFFICIALLY RATED THE NO.1 ESTATE AGENT IN THE NORTH EAST





North View, Wallsend NE28 7NF



# North View, Wallsend NE28 7NF

## Offers In The Region Of £199,950

Signature North East is delighted to welcome to the market this three-bedroom terraced home, perfectly situated in the heart of Wallsend. The property is ideally located for easy access to both the A19 and Coast Road, providing straightforward commutes to Newcastle city centre and the coast. The area is well connected by public transport, with nearby metro stations and bus routes, and offers a wide range of amenities including local shops, cafes, schools, parks, and medical facilities — all within close reach.

Brimming with character, the home boasts a number of original features such as ceiling roses and four feature fireplaces. Upon entry, you're greeted by a welcoming central hallway, which leads to a generous living room filled with natural light from a large bay window, offering ample space for your ideal layout. The dining room is well-suited for entertaining and seamlessly opens into the kitchen. The kitchen provides plenty of storage through both wall and base units, complimented by worktop space. From here, you can access the rear yard as well as the ground floor bathroom, which includes a bathtub, shower, WC, and hand basin.

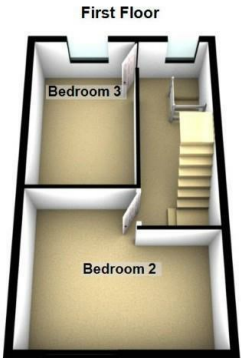
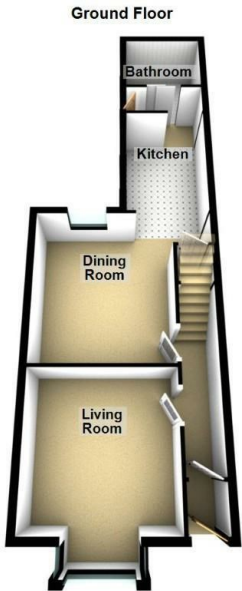
The first floor offers two bedrooms, each capable of comfortably fitting a double bed and additional furnishings. The journey continues to the second floor, where you'll find the primary bedroom, complete with its own shower, generous storage options, and Velux windows that fill the space with natural light. A separate toilet and hand basin can also be found on this floor for added convenience.

Externally, the property benefits from a private rear yard, ideal for placing outdoor furniture to enjoy warmer months. Additionally, on-street parking is available to the front of the home.



PLEASE NOTE THAT THE VENDOR HAS CERTIFIED THE PROPERTY INFORMATION AND IMAGES.

# PROPERTY FLOORPLAN



## Measurements:

Living Room  
12'2" x 12'0"

Dining Room  
13'6" x 6'6"

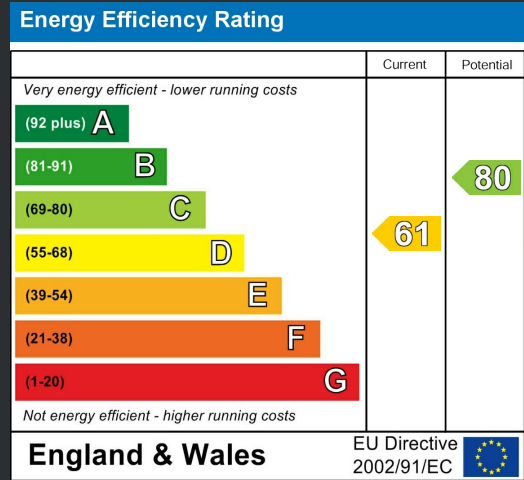
Kitchen  
10'7" x 7'4"

Bathroom  
5'7" x 7'4"

Bedroom One  
22'3" x 12'4"

Bedroom Two  
12'2" x 15'5"

Bedroom Three  
13'6" x 8'10"











More 5 Star Customer Reviews than any other Agent based in the North East on [allAgents.co.uk](https://allAgents.co.uk)



**SALES**

**LETTINGS**

**FINANCE**

**LAW**

**WE COVER THE WHOLE OF THE NORTH EAST**

Whitley Bay  
0191 251 3344

Cramlington  
01670 897 213

Tynemouth  
0191 296 6689

Morpeth  
01670 513 966

Ponteland  
01661 820 082

Wallsend  
0191 432 4151

Alnwick  
01665 511 800

Heaton  
0191 432 4275

Forest Hall  
0191 266 9966

Other locations  
0191 640 3523

Newcastle  
0191 640 2284

Durham  
0191 303 8252

Gosforth  
0191 640 3523

Sunderland  
0191 543 6390

Whickham  
0191 432 5102

Gateshead  
0191 432 4294

Jesmond  
0191 281 1037

Killingworth  
0191 640 3602

Ryton  
0191 413 9845

Head Office &  
Lettings  
0191 253 4815

\*Highest recommended 5-star reviews than any other Estate Agent based in the North East on [allAgents.co.uk](https://allAgents.co.uk) - The UK's Largest Customer Review Website for the Property Industry & Awarded Best Estate Agency 2018 & 2019 - North East England by SME News