

SIGNATURE

NORTH EAST

OFFICIALLY RATED THE NO.1 ESTATE AGENT IN THE NORTH EAST





 Cemetery Walk, Gateshead NE8 3EA

Cemetery Walk, Gateshead NE8 3EA

Asking Price
£395,000

Signature North East is proud to welcome to the market this unique four-bedroom detached home, located in a cul-de-sac in Gateshead. This exceptional property is a converted chapel, still boasting its original spire and bell, and has been refurbished throughout. Ideally situated, the home offers fantastic access to local amenities with Gateshead town centre just a stone's throw away. Gateshead Stadium Metro Station is within walking distance, providing excellent transport links across the North East, while Newcastle city centre is only a 10-minute drive. Families will also enjoy the abundance of nearby green spaces including Saltwell Park, as well as a range of local schools.

Upon entering the property, you are greeted by a central hallway that sets the tone for the rest of the home, brightened by a large arched window and offering access to a convenient ground floor W.C. Step through into the impressive open-plan living and dining room, where ample space and multiple large windows create a bright and versatile living area. The kitchen is equally striking, with a wealth of stylish wall and base units, sleek countertops, and a central island housing an integrated hob and overhead extractor—ideal for both cooking and entertaining. Integrated appliances include a fridge, freezer, dishwasher, and oven, while a separate utility room offers additional storage.

The home also benefits from a Hive smart system controlling both lighting and heating, and the downstairs has been newly recarpeted this year.

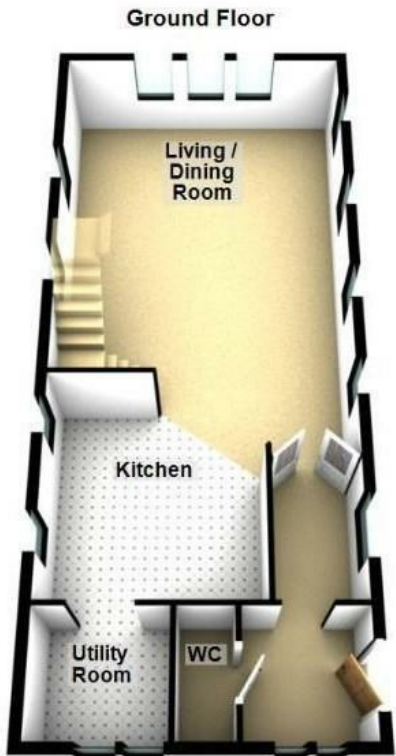
To the first floor, you will find four well-proportioned bedrooms. The primary suite is a standout feature, offering multiple Velux windows that flood the space with light, alongside a dressing room and en-suite complete with shower, W.C., and hand basin. Bedrooms two and three are each enhanced by arched windows, lending character and charm. A spacious family bathroom completes this floor and includes a bathtub, separate shower, hand basin, and W.C.

Externally, the property continues to impress with a stunning patio area to the front, setting a welcoming tone on arrival. The generous wraparound garden includes a decked area with pergola to the rear, perfect for outdoor dining and relaxing. Additional benefits include a front-facing workshop, ideal for hobbies or storage, and off-street parking to the rear of the property.



PLEASE NOTE THAT THE VENDOR HAS CERTIFIED THE PROPERTY INFORMATION AND IMAGES.

PROPERTY FLOORPLAN



Measurements:

Living / Dining Room
28'4" x 17'6"

Kitchen
13'4" x 12'3"

Utility Room
7'2" x 6'10"

WC
6'2" x 3'0"

Bedroom One
13'5" x 11'7"

En Suite
8'10" x 6'6"

Dressing Room
8'11" x 6'6"

Bedroom Two
13'5" x 8'10"

Bedroom Three
13'5" x 8'8"

Bedroom Four
10'2" x 8'1"

Bathroom
13'5" x 6'2"

Workshop
15'3" x 8'9"

Energy Efficiency Rating

	Current	Potential
Very energy efficient - lower running costs		
(92 plus) A		
(81-91) B		85
(69-80) C	67	
(55-68) D		
(39-54) E		
(21-38) F		
(1-20) G		
Not energy efficient - higher running costs		

England & Wales

EU Directive
2002/91/EC







More 5 Star Customer Reviews than any other Agent based in the North East on allAgents.co.uk



SALES

LETTINGS

FINANCE

LAW

WE COVER THE WHOLE OF THE NORTH EAST

Whitley Bay
0191 251 3344

Cramlington
01670 897 213

Tynemouth
0191 296 6689

Morpeth
01670 513 966

Ponteland
01661 820 082

Wallsend
0191 432 4151

Alnwick
01665 511 800

Heaton
0191 432 4275

Forest Hall
0191 266 9966

Other locations
0191 640 3523

Newcastle
0191 640 2284

Durham
0191 303 8252

Gosforth
0191 640 3523

Sunderland
0191 543 6390

Whickham
0191 432 5102

Gateshead
0191 432 4294

Jesmond
0191 281 1037

Killingworth
0191 640 3602

Ryton
0191 413 9845

Head Office &
Lettings
0191 253 4815

*Highest recommended 5-star reviews than any other Estate Agent based in the North East on allAgents.co.uk - The UK's Largest Customer Review Website for the Property Industry & Awarded Best Estate Agency 2018 & 2019 - North East England by SME News