

SIGNATURE

NORTH EAST

OFFICIALLY RATED THE NO.1 ESTATE AGENT IN THE NORTH EAST





 John Dobson Drive, Morpeth NE61 3NA

John Dobson Drive Morpeth NE61 3NA

Asking Price £1,250,000

Signature North East is pleased to welcome you to this five-bedroom detached home, located within the exclusive gated development of John Dobson Drive, Longhirst. Set in a desirable semi-rural location, this home offers the tranquillity of countryside living while remaining within easy reach of local amenities. Longhirst Golf Club, featuring two championship courses and a driving range, are a short walk away, and highly regarded schools, including King Edward VI School in Morpeth, are easily accessible.

Join us for our Open House Weekend this Spring! To secure your viewing appointment, contact our office on 0191 251 3344.

The ground floor opens with a central entrance hallway. From here, you step into the dining room, which connects through an archway to a spacious open-plan kitchen and family area. The kitchen features shaker-style units, sleek worktops, and a central island with breakfast bar. Integrated appliances include an AGA fridge freezer, Rangemaster double oven with induction hob, microwave combi oven, wine cooler, coffee machine, Franke hot tap, and dishwasher. French doors in the family space open onto the rear garden, creating a seamless indoor-outdoor flow. A separate utility room adds practical storage. The living room is bright and airy, with three large windows, while the additional snug offers flexibility as a home office, cinema room, or playroom. Two ground floor bedrooms, both with en-suite shower rooms, complete the downstairs level. The main bedroom also includes a walk-in wardrobe.

Upstairs, there are three further bedrooms, one with an en-suite. Bedroom five can be used as versatile space as a study or dressing room. A family bathroom with bathtub, separate walk-in shower, vanity unit, and W.C. completes the upper level.

Externally, the home is set on a plot approaching one acre, with ample greenery. A large, paved patio and a log cabin with firepit provide excellent outdoor entertaining areas. At the rear, an electric bridle path gate gives access to woodland and countryside walks. Additional benefits include ample off-street parking and a detached triple garage with carport, complete with external HD CCTV.



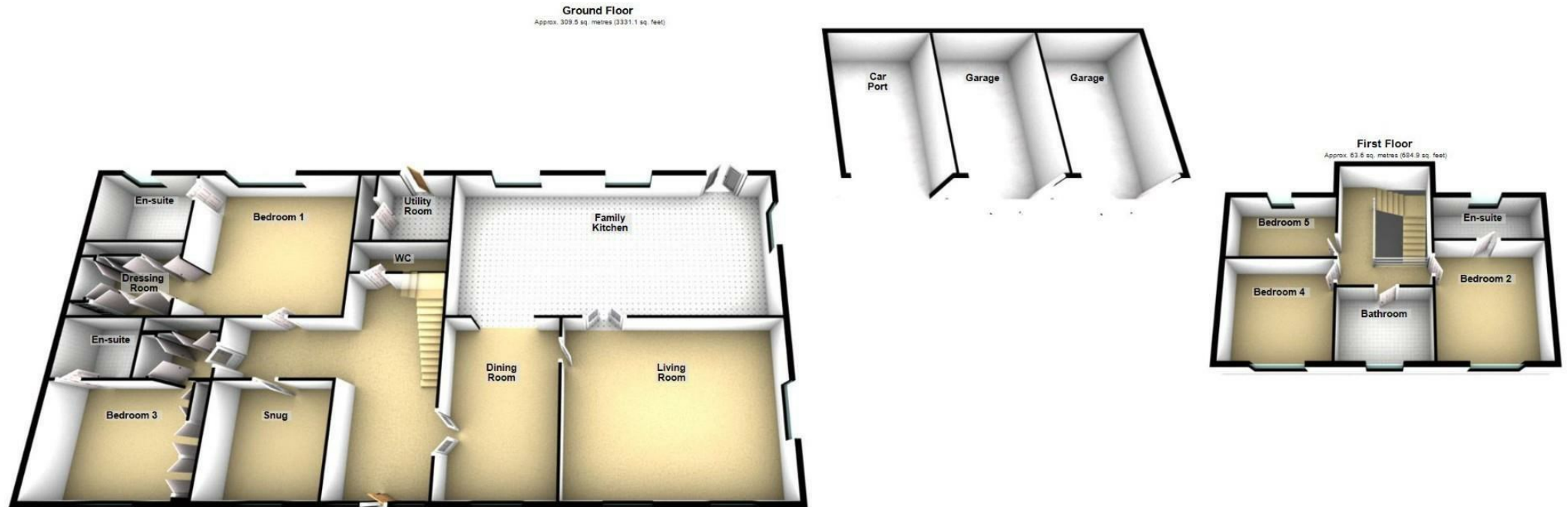


Why Signature?

Signature North East reach 150,000 per month on social media. We cover 19 locations in the North East. At signature we keep our doors open from 8AM - 8PM, when other estate agents are closed. We are a customer 5 star rated agent on allagents.co.uk. With a dedicated group of negotiators across the region, to the 'behind the scenes' Head Office team, each member of staff is passionate about the industry and cares about every client; you're at the heart of everything we do!

PLEASE NOTE THAT THE VENDOR HAS CERTIFIED THE PROPERTY INFORMATION AND IMAGES.

PROPERTY FLOORPLAN



Total area: approx. 373.1 sq. metres (4015.9 sq. feet)
Please be advised the floorplans are not drawn to scale and are to be used to give an idea of the layout of the property.
Plan produced using PlanUp.

EPC RATING: B



More 5 Star Customer Reviews than any other Agent based in the North East on [allAgents.co.uk](https://allagents.co.uk)



SALES

LETTINGS

FINANCE

LAW

WE COVER THE WHOLE OF THE NORTH EAST

Whitley Bay
0191 251 3344

Cramlington
01670 897 213

Tynemouth
0191 296 6689

Morpeth
01670 513 966

Ponteland
01661 820 082

Wallsend
0191 432 4151

Alnwick
01665 511 800

Heaton
0191 432 4275

Forest Hall
0191 266 9966

Other locations
0191 640 3523

Newcastle
0191 640 2284

Durham
0191 303 8252

Gosforth
0191 640 3523

Sunderland
0191 543 6390

Whickham
0191 432 5102

Gateshead
0191 432 4294

Jesmond
0191 281 1037

Killingworth
0191 640 3602

Ryton
0191 413 9845

Head Office &
Lettings
0191 253 4815

*Highest recommended 5-star reviews than any other Estate Agent based in the North East on [allAgents.co.uk](https://allagents.co.uk) - The UK's Largest Customer Review Website for the Property Industry & Awarded Best Estate Agency 2018 & 2019 - North East England by SME News