

SIGNATURE

NORTH EAST

OFFICIALLY RATED THE NO.1 ESTATE AGENT IN THE NORTH EAST





📍 , Chathill NE67 5HG

, Chathill NE67 5HG

Offers In The Region Of £600,000

Signature North East welcomes you to this stunning barn conversion in the charming hamlet of Wandylaw. Full of character and charm, this former B&B is now a lovely family home with the potential to convert back into an income-generating property. Located in the heart of Northumberland, it is surrounded by beautiful countryside and close to the Northumberland Coast, as well as historic attractions like Alnwick Castle and Warkworth Castle, making it ideal for family life. Despite its rural location, the area offers good transport links to nearby towns and cities, including Alnwick and Berwick-upon-Tweed, and easy access to the major road network.

Upon entering, the kitchen and dining area welcome you to the upper floor, featuring an abundance of base units, a larger fridge, freezer, two induction hobs, double extractor fan, three ovens, a double and a single, with a grill function, and a built-in dishwasher. The kitchen island offers a meal area that comfortably seats six. Adjacent is the sitting room, creating an open-plan feel with a multi-fuel stove and three windows that flood the space with natural light. Solid wood flooring flows through the lounge and hallway. Bedroom four, also on this floor, includes a convenient three-piece en-suite. The family bathroom features a jacuzzi bathtub, while a dedicated office space completes this level, making it ideal for working from home.

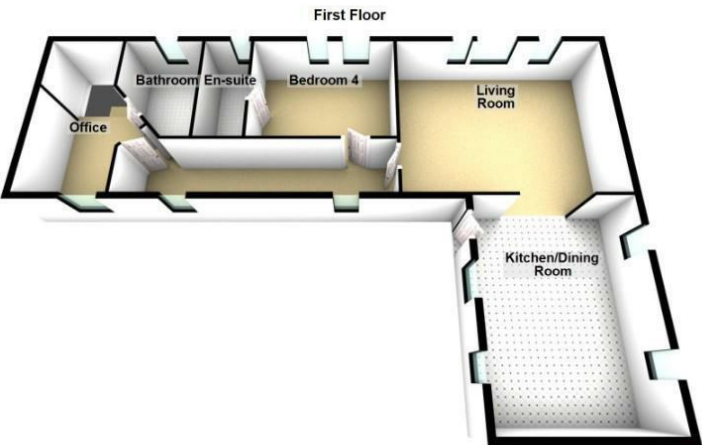
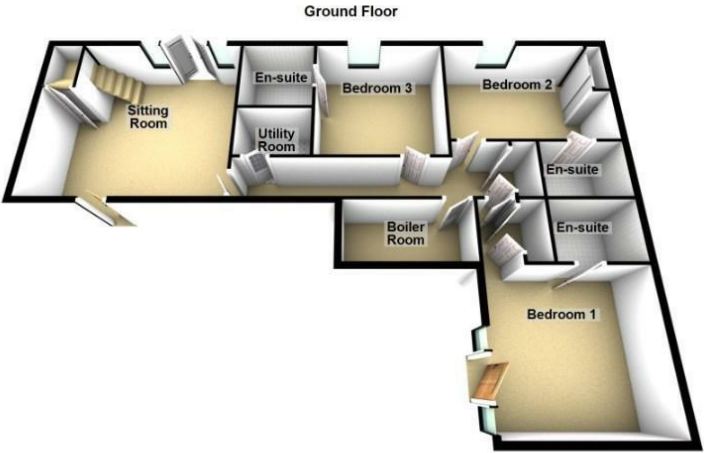
On the ground floor, three spacious bedrooms await, each featuring a three-piece en-suite, perfect for accommodating family and guests. Bedroom one offers an en-suite with a walk-in shower that includes an overhead shower and body jets, as well as outdoor access that seamlessly blends the indoor and outdoor spaces. The utility room is also on this floor, along with a secondary sitting room with French doors leading to the back garden. Front-door access is available on this level, along with a staircase to the first floor. Additionally, the ground floor features underfloor heating for enhanced comfort.

Outside, the private back garden offers breath-taking countryside views, as well as Holy Island and Bamburgh Castle. Featuring a patio area for outdoor furniture, a pond, and a lush lawn with a winding path for peaceful walks. The front driveway provides off-road parking for two cars, ensuring convenience and peace of mind.



PLEASE NOTE THAT THE VENDOR HAS CERTIFIED THE PROPERTY INFORMATION AND IMAGES.

PROPERTY FLOORPLAN



Please be advised the floorplans are not drawn to scale and are to be used to give an idea of the layout of the property.
Plan produced using PlanUp.

Measurements:

- Sitting Room
18'4" x 16'3"
- Living Room
19'10" x 16'3"
- Kitchen / Dining Room
19'2" x 13'10"
- Office
10'11" x 8'2"
- Bedroom One
18'11" x 13'6"
- En Suite
7'5" x 5'6"
- Bedroom Two
15'4" x 10'7"
- En Suite
7'5" x 5'4"
- Bedroom Three
12'2" x 12'0"
- En Suite
6'11" x 6'11"
- Bedroom Four
13'8" x 10'8"
- En Suite
10'8" x 4'5"

Energy Efficiency Rating		
	Current	Potential
Very energy efficient - lower running costs		
(92 plus) A		
(81-91) B	77	83
(69-80) C		
(55-68) D		
(39-54) E		
(21-38) F		
(1-20) G		
Not energy efficient - higher running costs		
England & Wales		
EU Directive 2002/91/EC		





More 5 Star Customer Reviews than any other Agent based in the North East on allAgents.co.uk



SALES

LETTINGS

FINANCE

LAW

WE COVER THE WHOLE OF THE NORTH EAST

Whitley Bay
0191 251 3344

Cramlington
01670 897 213

Tynemouth
0191 296 6689

Morpeth
01670 513 966

Ponteland
01661 820 082

Wallsend
0191 432 4151

Alnwick
01665 511 800

Heaton
0191 432 4275

Forest Hall
0191 266 9966

Other locations
0191 640 3523

Newcastle
0191 640 2284

Durham
0191 303 8252

Gosforth
0191 640 3523

Sunderland
0191 543 6390

Whickham
0191 432 5102

Gateshead
0191 432 4294

Jesmond
0191 281 1037

Killingworth
0191 640 3602

Ryton
0191 413 9845

Head Office &
Lettings
0191 253 4815

*Highest recommended 5-star reviews than any other Estate Agent based in the North East on allAgents.co.uk - The UK's Largest Customer Review Website for the Property Industry & Awarded Best Estate Agency 2018 & 2019 - North East England by SME News