

SIGNATURE

NORTH EAST

OFFICIALLY RATED THE NO.1 ESTATE AGENT IN THE NORTH EAST





📍 Dyke Neuk, Morpeth NE61 3SL

Dyke Neuk, Morpeth NE61 3SL

Offers Over £475,000

Signature North East is thrilled to present this unique five-bedroom detached home in Dyke Neuk, Morpeth. Offering a renovation opportunity, this property is being sold as seen and requires further construction work. The grounds will require landscaping, making it an ideal project for buyers looking to add their own finishing touches or for investors.

Nestled in a picturesque rural setting, this home is just 3.5 miles from Mitford and 5.4 miles from Morpeth, providing the perfect blend of countryside charm and modern convenience. Excellent road connections ensure easy access to nearby towns and major cities, making commuting effortless. Inside the property, the main living areas are spread across multiple levels, featuring three reception rooms and a kitchen-dining space. The kitchen is complete with a central island, a stone fireplace, and a spiral staircase leading to the first floor. French doors open onto a patio, creating an ideal space for outdoor entertaining. Adjacent to the kitchen, the sitting room offers a fireplace and access to a veranda overlooking the countryside. A potential sunroom at the front of the house further enhances the home's appeal with its panoramic views. The basement level provides additional living space, seamlessly connecting indoor and outdoor areas with bi-fold doors.

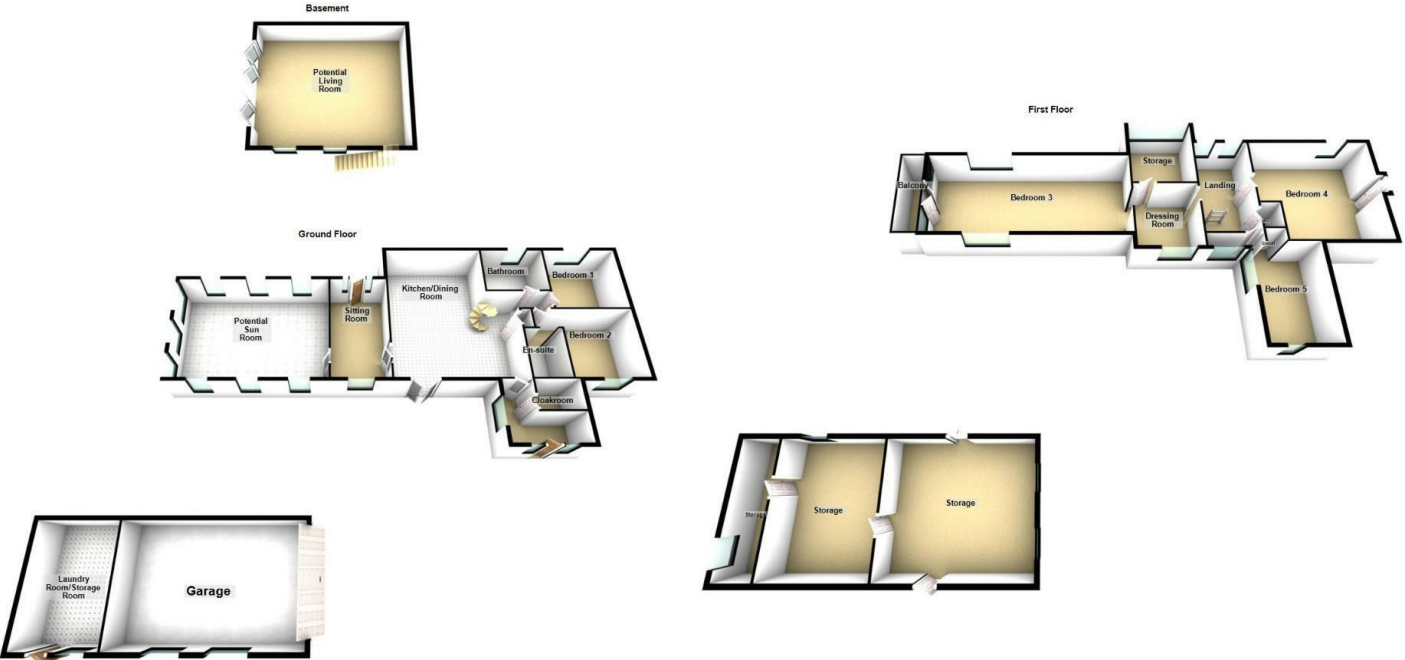
The ground floor hosts two generously sized bedrooms, one of which benefits from an en-suite bathroom with both a bathtub and a shower. A family bathroom, complete with a corner bathtub and walk-in shower, serves this level. Upstairs, the first floor features the primary bedroom with ample storage and a balcony, alongside a fourth bedroom, also with balcony access, and a fifth bedroom. A W.C. completes this floor.

Externally, the property sits on grounds with countryside views and ample space for patio areas. The garage offers additional storage with a loft space above.



PLEASE NOTE THAT THE VENDOR HAS CERTIFIED THE PROPERTY INFORMATION AND IMAGES.

PROPERTY FLOORPLAN



Please do not use the floorplan as a guide to the actual size of the property. Measurements are for information only.

Measurements:

- Kitchen/Dining Room
20'7" x 24'3"
- Sitting Room
9'1" x 18'2"
- Potential Sun Room
24'5" x 18'2"
- Bathroom
8'2" x 10'2"
- Bedroom One
11'8" x 11'10"
- Bedroom Two
11'4" x 12'2"
- En-Suite
5'10" x 8'7"
- Bedroom Three
30'9" x 13'8"
- Storage
10'9" x 9'7"
- Dressing Room
10'9" x 9'7"
- Bedroom Four
18'11" x 17'5"
- Bedroom Five
9'9" x 15'5"

Energy Efficiency Rating		
	Current	Potential
Very energy efficient - lower running costs		
(92 plus) A		
(81-91) B		
(69-80) C		
(55-68) D		64
(39-54) E	29	
(21-38) F		
(1-20) G		
Not energy efficient - higher running costs		
England & Wales		
EU Directive 2002/91/EC		





More 5 Star Customer Reviews than any other Agent based in the North East on [allAgents.co.uk](https://allagents.co.uk)



SALES

LETTINGS

FINANCE

LAW

WE COVER THE WHOLE OF THE NORTH EAST

Whitley Bay
0191 251 3344

Cramlington
01670 897 213

Tynemouth
0191 296 6689

Morpeth
01670 513 966

Ponteland
01661 820 082

Wallsend
0191 432 4151

Alnwick
01665 511 800

Heaton
0191 432 4275

Forest Hall
0191 266 9966

Other locations
0191 640 3523

Newcastle
0191 640 2284

Durham
0191 303 8252

Gosforth
0191 640 3523

Sunderland
0191 543 6390

Whickham
0191 432 5102

Gateshead
0191 432 4294

Jesmond
0191 281 1037

Killingworth
0191 640 3602

Ryton
0191 413 9845

Head Office &
Lettings
0191 253 4815

*Highest recommended 5-star reviews than any other Estate Agent based in the North East on [allAgents.co.uk](https://allagents.co.uk) - The UK's Largest Customer Review Website for the Property Industry & Awarded Best Estate Agency 2018 & 2019 - North East England by SME News