

# SIGNATURE

## NORTH EAST

OFFICIALLY RATED THE NO.1 ESTATE AGENT IN THE NORTH EAST





 John Dobson Drive, Morpeth NE61 3NA

# John Dobson Drive Morpeth NE61 3NA

Asking Price £1,295,000

Signature North East presents this exquisite five-bedroom detached home nestled within the gated community of John Dobson Drive, Longhurst. This stunning residence embodies the essence of peaceful and luxurious living. Its unique location allows you to enjoy the beauty of rural surroundings while still being in close proximity to essential amenities. You are within walking distance of Longhurst Golf Club, which boasts two beautiful championship courses, a driving range, and an academy. Additionally, Morpeth Cricket, Hockey, and Tennis Club hosts excellent sporting facilities for both adults and children. Local shops and outstanding schools are also easily accessible, making it an ideal choice for families.

The property is accessed through secure electric gates, followed by a driveway that leads to the residence. As you step into the property, a welcoming entrance hallway leads the way to the ground floor spaces and grants access to the staircase and convenient W.C.

The first stop is the generously proportioned dining room, bathed in natural light through elegant windows. Through an archway, you transition into the kitchen/family area, creating an open-plan atmosphere. The kitchen area is a standout with its stylish shaker-style base units, sleek countertops, and attractive island, complete with a breakfast bar. The kitchen also comes equipped with a range of AGA appliances, including a Fridge Freezer, Rangemaster Double Oven/Grill/Induction Hob, Microwave/Combi Oven, Wine Cooler and Coffee Machine, as well as a Franke Hot tap and Integrated Dishwasher. This area also offers versatile space with plenty of room for your preferred furnishings, creating the perfect spot to unwind. French doors lead to the rear, blending indoor and outdoor living for a refreshing atmosphere. Connected to the kitchen is a convenient utility room, providing additional storage space.

Next, you step into the living room, flooded with an abundance of natural light streaming through three large windows. This spacious room provides ample space for your preferred furnishings and serves as an ideal haven for relaxation. Continuing through the home, you'll come across the snug. This room is both versatile and spacious, accommodating your preferred furnishings. It offers the flexibility to transform into an additional reception area, a cozy cinema room, a home office, or a playroom, depending on your needs. Finishing the ground floor are two generously sized bedrooms, each easily accommodating a super king bed and other desired furnishings. Both bedrooms feature access to their own exquisite en-suite bathrooms, complete with delightful walk-in showers, vanities, and W.C., as well as access to ample storage space, with the master bedroom boasting a walk-in closet area.

As you ascend to the first floor, you'll be greeted by three generously sized bedrooms, two of which can easily accommodate a king bed and your preferred furnishings. One of these bedrooms boasts an attractive, modern en-suite featuring a walk-in shower, a vanity, and a W.C. The third bedroom, on the other hand, offers versatile space, allowing you to transform it into an office or dressing room, depending on your preference. Completing the first floor is the stunning main bathroom, showcasing modern, sleek tiling, a spacious bathtub, a walk-in shower, a vanity, and a W.C.

Externally, the property occupies an expansive plot of just under 1 acre, enveloped by lush greenery. It seamlessly integrates the beauty of nature with careful landscaping, highlighted by a recently installed, generously paved patio area designed to accommodate your preferred furnishings and serve as a delightful spot for outdoor dining. The log cabin takes center stage, featuring an impressive firepit. Additionally, an electric bridle path gate at the rear of the property leads to miles of woodland and Northumberland countryside walks. This property offers ample off-street parking through an expansive driveway, as well as an impressive detached triple garage with a carport, and it also benefits from full external HD CCTV.





### Why Signature?

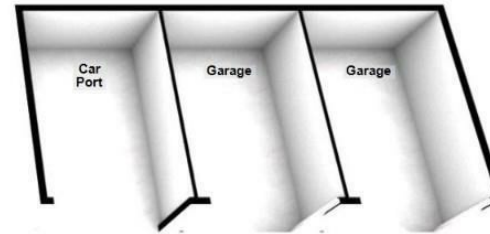
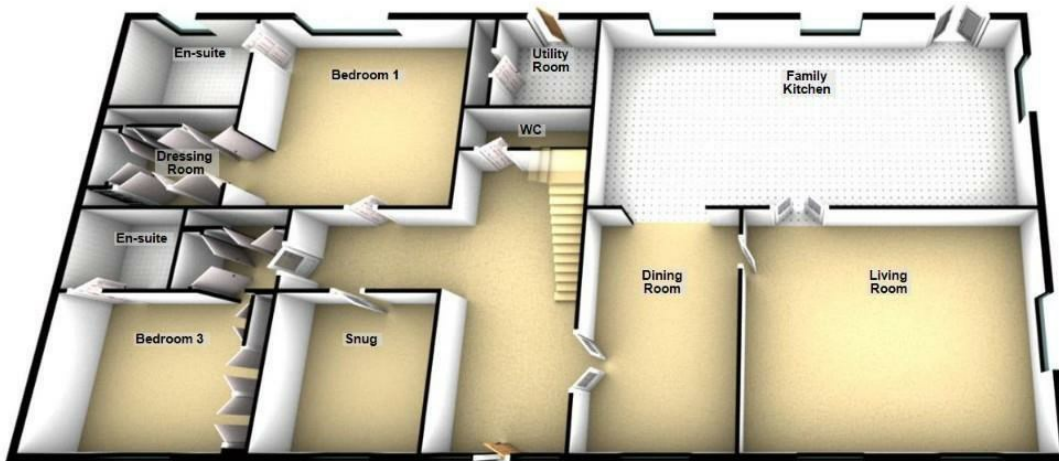
Signature North East reach 150,000 per month on social media. We cover 19 locations in the North East. At signature we keep our doors open from 8AM - 8PM, when other estate agents are closed. We are a customer 5 star rated agent on allagents.co.uk. With a dedicated group of negotiators across the region, to the 'behind the scenes' Head Office team, each member of staff is passionate about the industry and cares about every client; you're at the heart of everything we do!

PLEASE NOTE THAT THE VENDOR HAS CERTIFIED THE PROPERTY INFORMATION AND IMAGES.

# PROPERTY FLOORPLAN

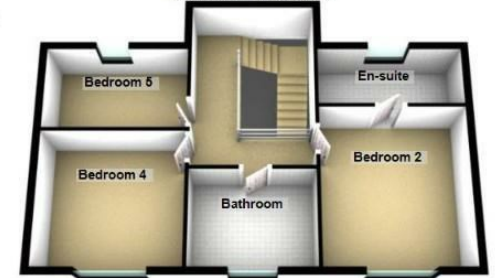
## Ground Floor

Approx. 309.5 sq. metres (3331.1 sq. feet)



## First Floor

Approx. 63.6 sq. metres (684.9 sq. feet)



Total area: approx. 373.1 sq. metres (4015.9 sq. feet)

Please be advised the floorplans are not drawn to scale and are to be used to give an idea of the layout of the property.  
Plan produced using PlanUp.

## EPC RATING: B



More 5 Star Customer Reviews than any other Agent based in the North East on allAgents.co.uk



**SALES**

**LETTINGS**

**FINANCE**

**LAW**

**WE COVER THE WHOLE OF THE NORTH EAST**

Whitley Bay  
0191 251 3344

Cramlington  
01670 897 213

Tynemouth  
0191 296 6689

Morpeth  
01670 513 966

Ponteland  
01661 820 082

Wallsend  
0191 432 4151

Alnwick  
01665 511 800

Heaton  
0191 432 4275

Forest Hall  
0191 266 9966

Other locations  
0191 640 3523

Newcastle  
0191 640 2284

Durham  
0191 303 8252

Gosforth  
0191 640 3523

Sunderland  
0191 543 6390

Whickham  
0191 432 5102

Gateshead  
0191 432 4294

Jesmond  
0191 281 1037

Killingworth  
0191 640 3602

Ryton  
0191 413 9845

Head Office &  
Lettings  
0191 253 4815

\*Highest recommended 5-star reviews than any other Estate Agent based in the North East on allAgents.co.uk - The UK's Largest Customer Review Website for the Property Industry & Awarded Best Estate Agency 2018 & 2019 - North East England by SME News