



6 Cornist Road
 Flint, Flintshire, CH6 5HG
 £190,000

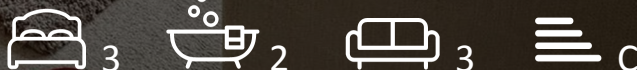
This Traditional Three/ Four Bed Semi Detached House has been Extended to the rear to provide a versatile Bedroom/Home Office with Shower Room and Utility Room. The property is situated in the desirable Cornist area of Flint. and ideally located within walking distance to Flint Town, Shops, Retail Park, Schools and local amenities. Viewing of this property is highly recommended to appreciate the size and layout. The accommodation in brief to the ground floor affords: Reception Hall, Lounge, Dining Room, Modern Kitchen/Breakfast Room, Bedroom 4/Sitting Room, Shower Room and Utility Room/Office, To the first floor you will find a landing area giving access to Three Bedrooms and a Three piece Family Bathroom. To the exterior there are enclosed gardens to the front and rear with a raised decked seating area and storage shed.. The property has the added benefit of Gas Central Heating and Upvc Double Glazed Windows and doors.

EPC - C
 Council Tax- C

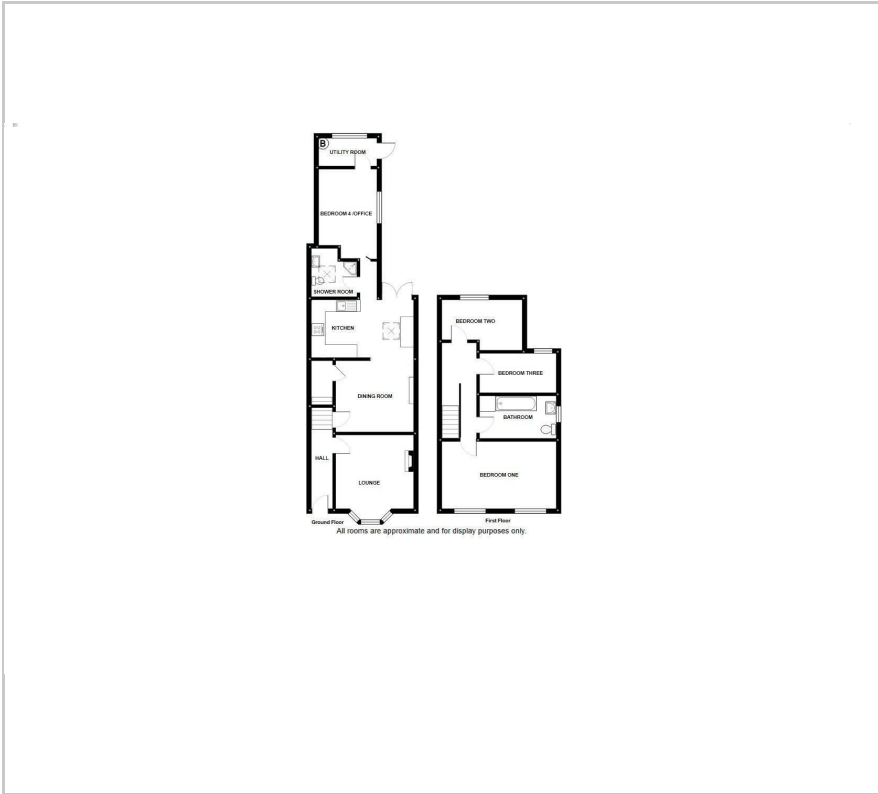
Viewing

Please contact our Flint at Reid & Roberts Office on 01352 762300 if you wish to arrange a viewing appointment for this property or require further information.

- THREE/FOUR BED EXTENDED SEMI DETACHED
- REAR ANNEX: BEDROOM, SHOWER ROOM AND UTILITY ROOM
- LOUNGE, DINING ROOM
- KITCHEN BREAKFAST ROOM
- LANDING AREA: THREE BEDROOMS
- THREE PIECE BATHROOM
- GAS CENTRAL HEATING
- Upvc DOUBLE GLAZING
- DESIRABLE LOCATION
- VIEWING HIGHLY ADVISED



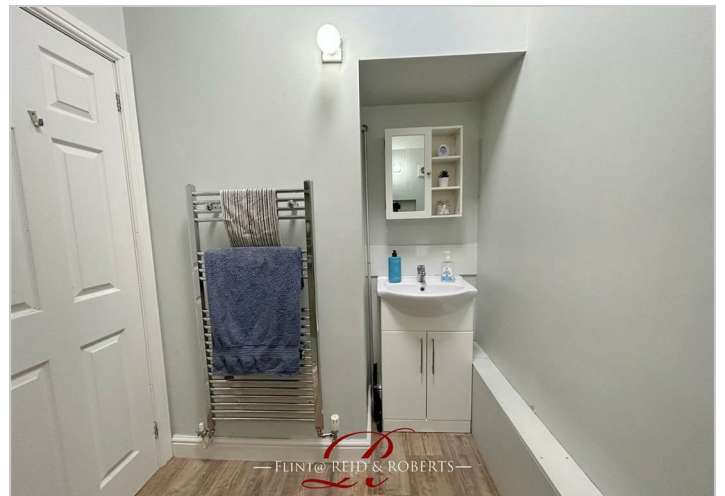
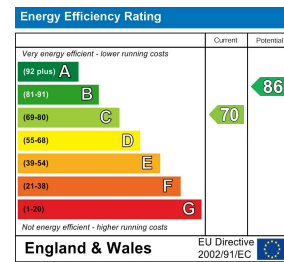
Floor Plan



Area Map



Energy Efficiency Graph



These particulars, whilst believed to be accurate are set out as a general outline only for guidance and do not constitute any part of an offer or contract. Intending purchasers should not rely on them as statements of representation of fact, but must satisfy themselves by inspection or otherwise as to their accuracy. No person in this firm's employment has the authority to make or give any representation or warranty in respect of the property.